



BALLARAT BIODIVERSITY STRATEGY *ENGAGEMENT*

WHAT WAS SAID REPORT

Ballarat City Council

October 2023



TABLE OF CONTENTS

INTRODUCTION 1

Overview 1

CONVERSATION KIT LAUNCH 2

Purpose 2

Attendees 2

Agenda 2

Smoking Ceremony 2

Welcome and getting started 2

Our work so far 2

ENGAGING THE 'CONVERSATION KIT' 3

Section 1: Favourite place or activity 4

Section 2: Improving the health of the natural environment 5

Section 3: Ideas and actions 6

Section 4: What can you do to make a difference 7

MYSAY SURVEY RESPONSE'S 8

Overview 8

Section 1: Favourite places and Activities 9

Section 2: Improving the health of the natural environment 10

Section 3: Ideas and actions 20

Section 4: What can you do to make a difference 35

...continued overleaf

Biodiversity encompasses all components of the living world — the number and variety of plants, animals and other living things, including fungi and micro-organisms, across our land, rivers and sky. With an increased urgency in a changing climate and growing development pressures, there is a need for action now to stop the decline and move towards improved biodiversity values and restore our natural environment.

HOW DO WE IMPROVE THE HEALTH OF OUR NATURAL ENVIRONMENT

YOUNG PEOPLE'S FORUM39

Purpose39

Attendees39

Agenda39

Smoking Ceremony39

Welcome and getting started39

Our work so far39

ENGAGEMENT RESULTS40

Connecting40

Conversations and yarn40

Building on our big ideas part 141

Building on our big ideas part 245

Explaining 'our big ideas'53

SUBMISSIONS54

NEXT STEPS56

INTRODUCTION

OVERVIEW

In November 2022, the City of Ballarat Council adopted a Biodiversity Vision and Commitment, outlining the shared goals of the community and Council in managing and safeguarding the municipality's distinctive landscapes and animal species. This vision aligns with the Council Plan 2021-2025 objective of providing policy guidance on biodiversity and natural resources management, and it supports the Ballarat Strategy 2040.

To engage the community in shaping the Biodiversity Strategy, the council initiated a broad community engagement process scheduled to run from August to November 2023. An initial step in the process is collecting wider community input on biodiversity.

This involved the creation of a 'Conversation Kit'—a tailored resource designed to support community members in facilitating discussions between friends, family, neighbours, or within organisations. The kit contains essential information on Ballarat's biodiversity, conversation prompts, and a report template for collecting data to be submitted to council.

The kit comprises vital information on Ballarat's biodiversity, conversation starters, as well as a report template for gathering and organizing data to be submitted back to the council.

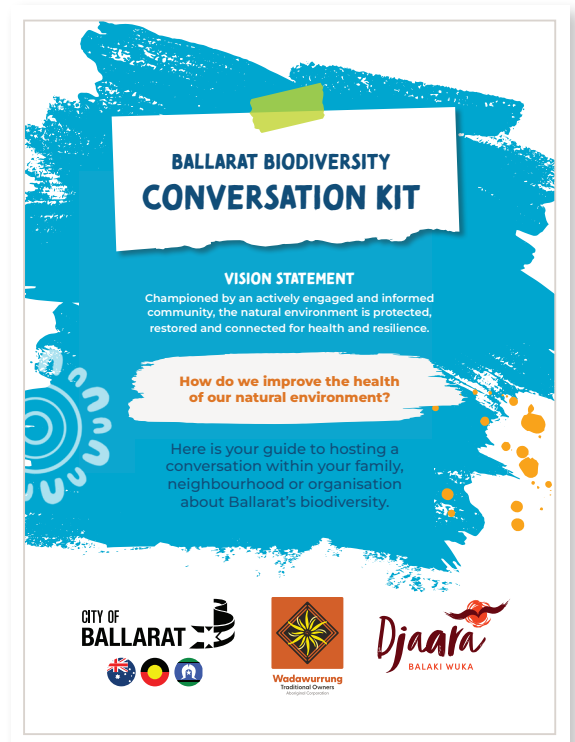
The kit was officially launched during a two-hour workshop on September 16th at the Earth Ed Centre in Mount Clear. Belinda Lowing and Aaron Bosch of MosaicLab facilitated the session.

Following the launch, the conversation kit was available on the Ballarat MySay page and a survey with the same the questions were open from 2 September to the 22 October 2023. The wider Ballarat community had the chance to provide their ideas about biodiversity through a number of methods.

A group of 20 young people were brought together on the 21 October 2023 to discuss and identify the priorities for the Biodiversity Strategy. This session was cofacilitated with Kelly Ann Blake from Wadawurrung and Lyndal Mackintosh from MosaicLab and the participants came up with six priorities:

- ♦ Preservation and restoration of Green Spaces
- ♦ Education, involvement, learning and awareness
- ♦ Community programs and engagement
- ♦ Environmental and sustainable development
- ♦ Pro- Active thinking
- ♦ Encouraging 'stewardship' to enhance green spaces and feeling ownership over the land

This '**what was said**' report serves as a summary of the conversation kit launch, the online engagement through MySay and the young people's forum.



CONVERSATION KIT LAUNCH

PURPOSE

The workshop allowed participants to experience firsthand how the conversation kit could be used as a guide for conversations with their own families, neighbours, or organisations, to identify, discuss, and documenting ways to enhance the health of Ballarat's natural environment and biodiversity.

The purpose of the workshop was to:

- ♦ Launch the conversation kit.
- ♦ Identify ways to improve the health of our natural environment.
- ♦ Consider priorities and actions that align and deliver on the biodiversity vision statement.

ATTENDEES

Attendees included 15 community members and three representatives from Ballarat City Council. The workshop was facilitated by Belinda Lowing and Aaron Bosch from MosaicLab.

AGENDA

TIME	AGENDA
10.00AM	Welcome & smoking ceremony
10.30AM	Our work so far & today's agenda
10.45AM	Let's use our conversation kits
11.35AM	Around where you live
11.40AM	Our responses
11.55AM	Next steps and Goodbyes
12.00PM	Close



SMOKING CEREMONY

Kelly Ann Blake, Wadawurrung Traditional Owner, conducted a Welcome to Country and Smoking Ceremony opposite the Earth Ed center at the Woowookarung Regional Park.

Participants' reflections from the ceremony underscored the importance of unity, stewardship, and the collective responsibility to preserve the land for future generations.

WELCOME AND GETTING STARTED

Participants were welcomed into the space and provided with an overview of the agenda and an explanation of the intention of the workshop.

OUR WORK SO FAR

Heath Stewart, Senior Sustainable Policy and ESD Officer at Ballarat City Council, presented an overview of the council's progress on the Biodiversity Vision Statement and discussed the pressing challenges confronting the community. The session also included a brief Q&A session for further clarification.

ENGAGING THE 'CONVERSATION KIT'

The next four sections outline the 'Conversation Kit' template and describe how participants engaged with and explored it during the workshop. The resulting outputs from both participants and council staff have been compiled and presented.

CITY OF BALLARAT BIODIVERSITY STRATEGY - OUR COMMUNITY REPORT
(The report can be captured here on this template or on mysay.ballarat.vic.gov.au/biodiversity-strategy)

Names (Optional): _____ Date: _____

SECTION 1
FAVOURITE PLACE OR ACTIVITY
1.
2.
3.
4.
5.
To add places directly to a map, please add them on the mysay.ballarat.vic.gov.au/biodiversity-strategy page

SECTION 2
IMPROVING THE HEALTH OF THE NATURAL ENVIRONMENT
1.
2.
3.
4.
5.

SECTION 4
WHAT CAN YOU DO TO MAKE A DIFFERENCE?

SECTION 3
IDEAS AND ACTIONS

NOW	IN 3 YEARS' TIME	IN 5 YEARS' TIME



SECTION 1: FAVOURITE PLACE OR ACTIVITY

Participants collaborated in groups of three to discuss and record their favorite places or activities around the Ballarat region. Afterwards, they had the opportunity to share some of these responses with the entire group.



FAVOURITE PLACE OR ACTIVITY

Mt Buninyong (2):

- High points with visitors.
- Big views and landscape connectivity.

Cambrian Hill

Central Ballarat - balcony and rooftop garden.

Home gardens (urban and peri urban).

Our own backyards when we encounter wildlife in them.

Lake Esmond.

Mullawallah.

Sparrow ground.

The corridor - Land Tenure/Restoration.

Wetlands.

Woowookarung (2).

Yarrowee River: (4)

- Revegetation areas
- Tributaries from Gong Gong Reservoir to Franklin's Bridge Trail Walks.

Leigh River (Gorge).

Anything which improves the urban & agricultural environments for biodiversity.

Spending time in nature – inspirational & lifts the spirit.

SECTION 2: IMPROVING THE HEALTH OF THE NATURAL ENVIRONMENT

Participants were reminded of the aim of the Biodiversity Strategy: to increase the biodiversity of the area so a variety of plants and animals co-exist sustainably. In small groups, participants discussed the question: **“How do we improve the health of our natural environment?”** After which, the entire group assembled to discuss and exchange their insights and perspectives.



HEALTH OF THE NATURAL ENVIRONMENT

Using local knowledge to inform local community and council decision making around biodiversity management.

Increasing the complexity and diversity of local places infill plantings of indigenous trees shrubs for groundcovers in parks, reserves, water courses.

Council encouraging and facilitating small community ‘friends’ of groups to contribute to the management of small public land parcels.

Ensure future land use patterns and practices don’t degrade the remaining native vegetation or water quality in creeks and waterways.

Make volunteering opportunities easier for people to find out about. Have a central contact person in council who volunteers can go to about advice.

Community weed education program - must include private land.

Restore natural vegetation more areas - including grassland.

Create/restore wetlands/stormwater retention – Vic Park Miner’s Rest wetland water supply - water depth.

Reference 1990? Ballarat Urban Nature Conservation Strategy by BIAE (Fed Uni) funded by CFL/NRE.

Restoration of landscape natural and intervention.

Removal / suppression of invasive /exotic species.

Creating a community biodiversity shared vision.

Plant it and they will come!

Planting appropriate species in the right place - floristic mapping units.

Have a register of biodiversity assets.

No building on wetlands or floodplains.

Identify and re-establish connected corridors for wildlife.

Value and use citizen science data to inform.

SECTION 3: IDEAS AND ACTIONS

Participants were informed about a focus area within the Vision Statement and Commitment: the urgency of taking action to establish protected and resilient ecosystems. In the same groups, participants were asked to build on their ideas generated in the previous section and to consider what they thought was crucial to accomplish in the present, within the next 3 years, and within the subsequent 5 years. Results are shown below.

NOW

Accumulate an email list of local knowledge for informing council officers.

Identifying local biodiversity champions in specific locations in Ballarat so that council can dialogue with them and build partnerships.

Re idea above of Create/restore wetlands/stormwater retention – Vic Park Miner's Rest wetland water supply - water depth – restore water to wetland.

Re idea above of community weed education program - must include private land – ongoing program for eradication.

Strong biodiversity plan and the rules that guide it – all flows from this.

Register of biodiversity assets.

Stop urban sprawl no loss of biodiversity - infrastructure sensitive to wildlife & very strict cat and dog laws.

Identify unused roadways /crown road reserves and get them leased and planted up.

Roadside- extend overlays to roads.

3 YEARS

Supporting volunteer groups

Building community and biodiversity hubs

Develop partnerships with land for wildlife for suburban to larger properties.

Greater citizen involvement and increased biodiversity funding. People / groups are supported to engage in biodiversity repair.

Check in with strategy to see where we were up to at the 6 or 12-month mark.

Elevate significance of biodiversity of environment with heritage.

5 YEARS

Connect planting car doors for local wildlife that is evident from satellite photography.

Well on our way to 90% true coverage - biodiversity on the rebound.

Curbing the loss of biodiversity by croppers / farmers.

SECTION 4: WHAT CAN YOU DO TO MAKE A DIFFERENCE

Participants were encouraged to engage in self-reflection at home. They were prompted to consider their immediate surroundings, including their residence, neighborhood, workplace, school, and social hangouts.

The key question posed was, ***‘What positive impact can you personally make to enhance the health of our natural environment?’***



ADDITIONAL FEEDBACK:

At the end of the session, participants were encouraged to record additional ideas or feedback that may not have been captured on the conversation kit template.

Two responses were submitted:

1. “Where are the Councilors – 9 of them, to share values with us”
2. “Change the carrot for “development” from \$\$\$ to life support (biodiversity + ecosystem processes) systems.

MY SAY SURVEY RESPONSE'S

OVERVIEW

The City of Ballarat initiated a MySay survey page, providing residents with an avenue to voice their opinions on biodiversity and share insights on how best to support the well-being of local plants and animals. The MySay page also contained links to the conversation kit printout and background information on biodiversity in the City of Ballarat, including the Wadawurrung Healthy Country Plan and Dja Dja Wurrung Healing Country Plan.

The My Say survey mirrored the layout of the conversation kit and was accessible from September 15th to 5pm on October 15th. Results from the online survey have been collated and lightly themed below.

FAST FACTS

MY SAY SUMMARY - HIGHLIGHTS



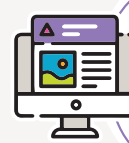
87

Engaged Visitors
(submitted a response)



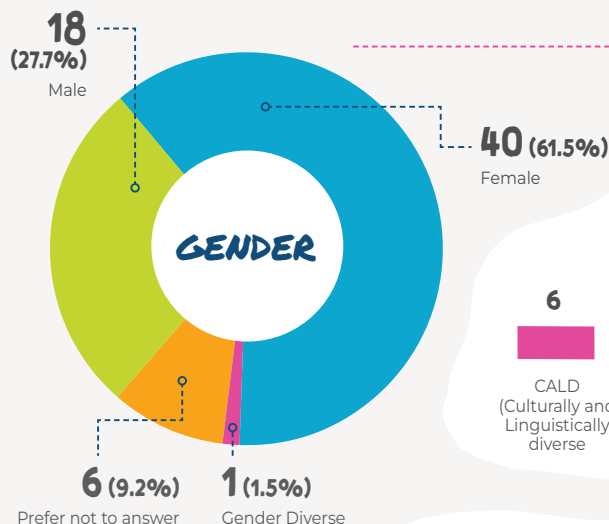
160

Informed Visitors
(reviewed information)



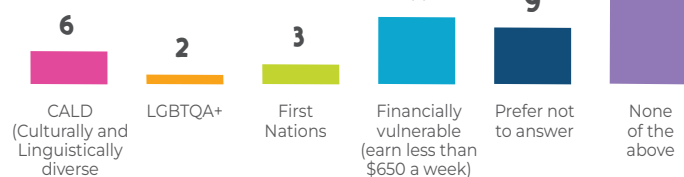
471

Aware Visitors
(visited MySay
'Ballarat
Biodiversity
Website')

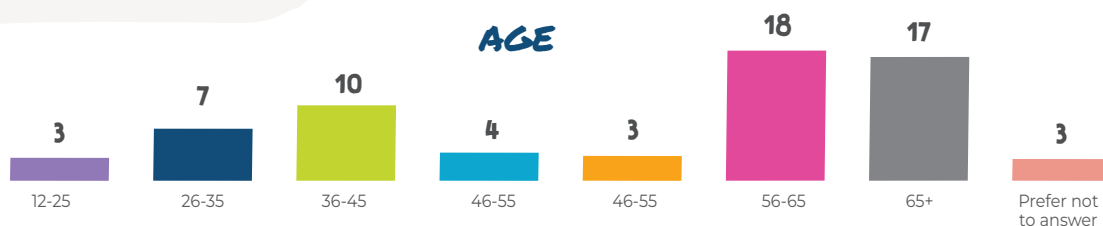


DEMOGRAPHICS

IDENTITY



AGE



SECTION 1: FAVOURITE PLACES AND ACTIVITIES

MySay survey respondents were able to mark their favorite spots on a digital map, while physical conversation kits were filled out by hand. The data has been compiled and is presented in the following table.



FAVOURITE PLACE OR ACTIVITY

Alfredton

Engaging with other people to promote wider appreciation of the beauty and environmental value of Ballarat's indigenous flora.

Lake Wendouree (3).

- Could be the best ecotourism place in Victoria.

Planting indigenous trees, shrubs and groundcovers and wetland plants in gardens and at revegetation sites on public and private land.

Propagating and nurturing young indigenous trees, shrubs and groundcovers and then distributing them to council employees, schools, and community groups for planting in and around Ballarat.

Skipton Rail Trail

Spending time bush walking, flower spotting and birdwatching in natural places e.g., Creswick, Woowookarung and Enfield Forests, Yarrowee River, Mt Buninyong.

Volunteering at the City of Ballarat Indigenous Plant nursery – we love the proactive and positive environmental work, social interactions and learning from each other.

Walking, riding a bike.

Woowookarung Regional Park - Fern Walk.

Yarrowee River.

SECTION 2: IMPROVING THE HEALTH OF THE NATURAL ENVIRONMENT

MySay survey respondents were asked to respond to the question “How do we improve the health of our natural environment”. They were able to add their top three ideas into the online tool. From the responses received, they have been lightly themed into similar responses with 12 themes shared below and the individual responses.



CONSERVATION AND HABITAT PROTECTION

Build agency to create new biodiversity opportunities.

Care for wildlife more, be aware of their habitat and more protective and informative information.

Cat curfew.

Banning fishing at Lake Wendouree because of the constant harm and injuries caused to wildlife through discarded hooks and line.

Stop consuming meat and dairy because of the massive destruction of habitat and the enormous amount of land degradation, water pollution and carbon emissions.

Connecting established natural spaces, via wildlife corridors, re wilding of creeks (drains).

Consider that we have failed in stopping three degrees of warming and consider how that is going to change our local ecosystems.

Create habitat for wildlife.

Do not allow cats to roam freely outside. All cats should be kept inside or in an enclosed outdoor area that they cannot get out of.

Do regular and timely controlled burns to minimise risk of out-of-control bushfires due to too much fossil fuels and vegetation.

First and foremost, must be the prevention of biodiverse landscape clearing!! Many house sites have been approved in fully treed areas near me, in the last 5 years. Despite overlays for the protection of koalas, critical vegetation conservation, erosion etc. House sites are approved in serious fire danger areas. And then the fire prevention overlay kicks in trumping all the others allowing huge areas to be cleared in the name of safety! Why? It is completely irrational to hand out building permits in these areas.

Help future migrating ecosystems migrate into our local changing ecosystem.

Help our local ecosystems migrate as they would have over millions of years had 3 degrees of warming happened naturally.

Increase areas of habitat.

...continued overleaf



CONSERVATION AND HABITAT PROTECTION

...continued

Increase efforts to preserve and regenerate natural vegetation within the city.

Less plant trampling.

Maintaining / Planting green corridors where native animals (such as Koalas) live and move about in their territory.

Make sure planning decisions enhance and incorporate wildlife corridors throughout the town, as a priority. Put more paths so people can walk to services and shops and have wider roads so buses can get in. Stop traffic in Victoria Park. Look after the wildlife more around Lake Wendouree. Put in more trees and diverse plantings in smaller playgrounds. Clean up Yarrowee River and Canadian Trail waterways.

Minimise all aspects of disturbance in the environment.

Monitor rush more in the town.

Promote/enforce the cat curfew.

Protect areas that we already have.

Protect our existing areas of native vegetation from removal and development.

Protect our existing biodiversity.

Protection of current natural spaces and reduction in the use of spraying herbicides.

Put another bin around lake Esmond for rubbish near pontoon. Encourage nature strip plantings, clean guidelines and no cost. Continue your excellent street tree planting scheme.

Reassess priority with environment at the apex, the health of all living things will then be protected.

Reduce animal agriculture.

Regular burning of grasslands in Victoria Park. This has been done in 2023 but need to be repeated at regular intervals i.e., every few years.

Retention, protection and restoration of existing natural environment, example protect large trees for Koala habitat.

Stop destroying wildlife habitat & building houses on it.

Stop illegal destruction of native vegetation.

Strong protection of remnant native vegetation i.e., prevent tree removal in housing developments.

The environment should not be adjusted to suit all players, there is a limit to how much damage it can sustain.



EDUCATION AND COMMUNITY ENGAGEMENT

Allow citizens to plan out nature stripes with endemic species without having to apply for a permit. Provide education to citizens about these plants and offer workshops on how they can plant such species to attract and support wildlife.

Community education: Increase the visibility of environmental issues on the City of Ballarat website – content could include relevant City of Ballarat policies and plans e.g. urban forest, nature strips, koalas, Yarrowee masterplan, waste management, indigenous plant nursery info and other resources existing or developed in future; links to community environmental organisations, council contacts re enviro issues.

Community expertise and enthusiasm: Establish an Environmental Advisory Committee to work with council staff to offer guidance on issues such as Community Education, Community Enviro Group Support and Environmental management as below.

Create and maintain mini wetlands with schools to be involved. Maintain wetlands that are existing.

Create awareness & education pathways for all communities (businesses, schools, general public, community organisations) to understand biodiversity & connect with nature more.

Educate residents about helping environment in their backyards

Education across all age and demographic spheres, built on science and present realities and related actions required by all people, as well as government and industry.

Education and awareness at all levels - preschool through high school/Tafe and into professions.

Education for primary school students is essential to ensure the next generation value, connect and respect local flora and fauna.

Educational festival run by City of Ballarat at Springfest (promote what you're doing to locals especially towards the younger generation.

Encourage communities to add plantings to their street verges.

Encourage growing of vegetables on the verges/sidewalks.

Encourage residents to use street frontages for plantings and commit to shading all footpaths with shade trees.

Encourage visitors to our natural environment to respect nature.

Environmental management: conduct an audit of biodiversity assets in reserves and on roadsides within the city boundary, including weed infestations and litter control. Design Management Plans for annual weed control and indigenous planting for each identified area.

Fund and support volunteer environmental work.

...continued overleaf



EDUCATION AND COMMUNITY ENGAGEMENT ...continued

High profile public awareness/education.

Incentivise landscaping with local endemic plant species (not just general Australian natives) for public and private developments.

Much more fun educational signage around our parks, reserves, and green spaces.

Offer free, or subsidies for the purchase of native plants from a council nursery.

School groups involvement

Support and actively promote organisations run by volunteers to educate and involve community in nature: bird observers, Botanikids at the Gardens, Field Nats, Landcare gos.

Support community groups that want to help the environment.

Support grass roots environmental groups

Support the community to value, protect, understand and enhance native biodiversity (e.g. through grants, Citizen Science, blitz).

Update the protected tree register, invite more public submissions, and make it more publicly available.

Council encourages community groups e.g., Scouts, Churches, Parkrun, Mountain Bikers, etc to “Adopt an area” to improve natural biodiversity. Support would be to provide free plants (via the City of Ballarat nursery) plus guards and stakes, mulch or weed mats etc. Groups could be encouraged to contact the nursery for advice regarding appropriate plant selection for the site.

Council encourages residents to form “Friends of (place)” groups centred around a public natural place near where they live and supports the groups to hold and promote regular working bees to remove weeds and revegetate with native trees, shrubs groundcovers and wetland plants as appropriate.

Use the expertise of the City of Ballarat Indigenous Plant Nursery Volunteers to guide species selection across the city for plantings on nature strips, parks, gardens, waterways, sport reserves etc.



FIRST NATIONS INVOLVEMENT AND INDIGENOUS KNOWLEDGE

Develop a sense of stewardship in the community.

Employ the ideas of First Nations People's, as well as try to replicate what the environment looked like pre-colonisation.

Give control of all local (though should be all national and state) forests to the local first nations people to manage as they have for tens of thousands of years.

Learning how to prevent bushfires by indigenous people.



GRANTS AND FUNDING

Community Grants should all contain a biodiversity element.

Community group support: Offer grants for on-ground work and education programs, establish and maintain an environment section on the City of Ballarat website as above,

Council establishes an environment fund from which investment income is used to provide small - medium environmental grants for Ballarat-based community groups to undertake on-ground environmental work (e.g. planting, woody weed control) on public land within the municipality.



PLANTING

Invest in plantings for wildlife corridors along all creeks in greater Ballarat.

Plant diverse plants.

Plant more trees (with a view to enhance biodiversity).

Plant more trees in Pennyweight Park with more walking tracks and enhance creek area at lowest point.

Plant more trees.

Planting a variety of trees and shrubs.

Planting that will cope with global warming conditions.



NATIVE FLORA AND VEGETATION

Allow and encourage nature strip plantings of wildflowers and native grasses

Allow planting of endemic species on nature strips.

Continue planting of indigenous plants on council land, road reserves and as street trees.

Focus on endemic and biodiversity-encouraging trees for street trees.

Identify, describe, and record indigenous flora and fauna.

Increase the planting of native species in any areas available, such as along waterways, reserves and the many random pockets of land that are currently just non-native grass and nothing else.

Less invasive species invading the space of native species.

More native trees.

Plant a variety of native plant/tree species on nature strips instead of exotic plants such as plane trees that do not provide food or shelter for native fauna.

Plant indigenous flora.

Plant indigenous trees, shrubs and grasses.

Plant more indigenous trees, shrubs, and groundcover.

Plant more local indigenous plant species wherever possible.

Plant more native trees and plants

Plant more native vegetation.

Plant more natives

Plant native flora in public spaces; nature strips, roundabouts, playgrounds.

Plant native species - top, middle and low story into the areas which need revegetation.

Planting local indigenous vegetation and caring for it to grow.

Replace introduced species with indigenous

Sow native grasses.

Stop planting non-native trees, shrubs etc. on roadsides and in public areas.



STAFF AND RESOURCE MANAGEMENT

Council develops adequate staff and resources to monitor development construction activity and enforcement of native vegetation clearance and pollution/erosion breaches.

In collaboration with City of Ballarat, Indigenous Plant Nursery Volunteers, council develops internal resources for staff about local native plants and the ecological value of incorporating them into urban design. e.g. a booklet or website Revegetation and Landscaping with Indigenous Plants Guidelines for use by staff in Departments such as Parks and Reserves, Waterways, Street Landscaping (Road/Traffic Management Engineering).



REGULATION, PLANNING AND LAND USE

Stop urban sprawl.

Increase city funding

Address threatening factors such as weeds, feral animals and land clearing through enforced regulations and education.

Apply and/or upgrade regulations already in place such as koala overlay, no dogs/cats etc instead of letting property homeowners and developers get away with removing trees etc. current fines insufficient to stop such.

Appropriate planning and implementation for habitat, corridors, etc.

Better planning around new developments to reduce the impact on the natural environment, example Environmental Management Plans.

Don't plant trees under powerlines, then have to cut them down.

Ensure developers adhere to the planning permits and do not remove or pollute the natural environment.

Ensure that the planning controls already in place are properly administered.

Exemptions from clearing in the name of 'offsets' is another ludicrous joke. There is so little remnant vegetation that any clearing in any location containing any type of remnant vegetation can mean the extinction of local species and the subsequent shrinking of the gene pool. The areas of remnant vegetation in the Ballarat area are so miniscule that any encroachment on their viability should be treated as a serious crime. Propagating and planting locally sourced indigenous vegetation needs top priority after full protection.

Follow through with implementation and policing of guidelines/regulations.

I know many people that have reached out to land care groups, hoping to revegetate cleared areas of their land

and found its too expensive. Make it affordable.

Increase environmental requirements for planning permits.

Planning scheme: Make changes to increase permeability of new subdivisions, better protect remnant vegetation, require offsets to be immediately local, require reticulation of stormwater, protect waterways during construction and through good design, minimal ESD compliant street and outdoor lighting etc. Increase compliance monitoring and penalties for breaches.

Prioritise consideration for environment when approving housing development or considering tenders on council projects.

Provide incentives for landholders (both rural and within the city) to plant native flora, such as a % off rates.

Put rules in place that limit and contain development in sensitive areas.

Reduce the impact of people. Increasing Ballarat's population by approx. 25% in the next few years will not help. Ballarat needs a program to control the population in the region. Growth at all costs seems to be the mantra without real thought about the impact of such growth apart from someone making money!!

Sensible development - current new housing is packing too many houses on tiny blocks (Lucas, Winter Valley) with little green space and no thought at all given to public transport.

Stop allowing people to remove vegetation.

Stop monoculture large scale farming and support small to medium scale local farmers.

Stop selling land that is prone to bush fires and instead use cold burns to minimise fire risk and protect fauna and flora.



SUSTAINABLE DEVELOPMENT AND URBAN PLANNING

Better and more off-road cycle paths.

Build bike paths.

Create nature play spaces with rocks different gravels, sand and clay, interesting plantings of low mud and high trees grasses and shrubs. Creates interest and sensory stimulation and if these are labelled provide education for people's gardens.

Don't rip up all the trees and habitat in new estates (such as Winter Valley).

Establish more protected nature reserves and planning on nature and related transportation corridors which facilitate diversity, migration, and sustainable development for our future.

Improve cycling infrastructure to reduce car use / air pollution

Increase the width of natural corridors when designing new developments.

Limit development - further sprawl will encroach on and remove biodiversity for decades (potentially forever).

Limit urban sprawl / build smarter suburbs with integrated natural spaces.

Make our natural resources more valuable to all by encourage all stakeholders to engage in and use our parks and forests, (like in Europe) by providing good access for all, cyclists, horse riders, motor bikes, gold detectors, hunters, beekeepers, joggers, local wood harvester day trippers etc and once more people appreciate and understand the value of the natural environment first hand, caring for it and understanding the importance of biodiversity in the environment will be supported by all.

More nature reserves and natural spaces that attract native species.

More pedestrianisation.

New housing developments must be sensitive to creeks/ preserving habitat havens and corridors. Strict guidelines for developments to not destroy and build over whole swathes of land, destroying any natural habitat and displacing wildlife. Creeks need to be preserved and cared for and rehabilitated.

Plan for wildlife corridors throughout the suburbs - creative town planning and support volunteers.

Plan to expand.

Stopping urban sprawl because it destroys wildlife habitat.

More bike tracks and improved public transport to get cars off the road.

Put seats near nature spaces for grandparents and carers.

Spend time on the lake behind the Mecure Inn east side. We could have twin lakes in the East which would be amazing. Belongs to Parks? If so, then it belongs to the people. Could also accommodate ample parking and walking, riding etc.

Stop putting in tree plantations on the Band Oval and behind the residences along the creek between Brown Hill Cricket Club and Ainley Street Bridge. You have been destroying our open spaces, vista and substantially increasing our wildfire risk and reducing our winter sun. We the residence have been saying NO for years. [REDACTED] and the City of Ballarat have ignored our pleas for you to STOP. NO means NO!!!!

Work on adding areas of natural environmental space to all new areas developed. Include sensitive inclusions of grasslands.



Reduce light pollution particularly around wildlife areas such as Lake Wendouree and Yarrowee Creek etc

Avoid plastic wrapping and containers.

Banking single use items.

Better and more recycling.

Clean up illegal dumping.

Improve penalties for littering in bush settings.

Instead of green bins, give out composting facilities (and instructions) and bring in a rule to encourage people to not waste/consume needlessly.

Less litter.

Making sure that people who walk their dogs take their dog poo home with them. This used to happen and now it seems to be something that no longer happens.

Move quickly to environmentally friendly energy production and supported access.

Prohibit use of harmful chemicals in the municipality - e.g., roundup (a known carcinogen), Atrazine (causes changes in gender for many species, including frogs/amphibians).

Provide functional and successful recycling programs for household waste.

Recycle everything possible.

Reduce emissions, eco-friendly fuels, reduce waste into landfill, protect significant trees and wildlife species.

Reduce pollution by improving waste management and recycling opportunities, and utilising and investing in public transport.

Stop chemical pest and weed control.

Stop litter and chemicals.

Stop rubbish dumping by having a Hard Rubbish Day.

Stringent control of illegal rubbish or toxic material dumping. increase fines/penalties, use better surveillance to catch culprits.

Teams to collect rubbish in creeks etc.

Stop using plastic.

Trap/remove rubbish entering waterways.

Upcycle waste products.



WATER QUALITY AND CONSERVATION

Better manage the water available in our region. Much of the runoff is currently captured in farm dams. In the Moorabool region at least 48% of runoff is captured in dams!! The waterways need to run.

Clean up our waterways.

Foster and improve our natural waterways.

Improve the quality of our local waterways with the removal of weeds (Willows, gauze, blackberries) and replace with appropriate native species, rubbish removal from our creeks and waterways and removal of pest species such as carp.

Maintain healthy waterways.

Practice better water conservation

Prioritise creating healthy water ways - don't allow real estate development close to waterways.

Protect waterways and wetlands.

Rewild the Yarrowee River by removing the blue stone canal and revegetating.

Use less concrete and synthetic materials, restore natural waterways.



WEED AND PEST CONTROL

24-hour cat containment to reduce the amount of native wildlife killed by cats.

Control invasive weeds e.g., gorse.

Eradicate weeds and introduced species in bushland especially along rivers/creeks and revegetate with a range of endemic species.

Keep these spaces clean and safe.

Removal of weeds which seed first & all weeds which colonise the bush reserves and natural scrublands.

Removal of weeds, pest and invasive species.

Remove the rabbits, cats, and foxes. clean up Yarrowee river and its banks.

Remove weeds infringing on our natural environment reserves.

Remove weeds.

Remove/reduce the amount of gorse and broom in the block bordering Richard,

Spencer, and Fussell Streets, locally known as Sandy Banks. In the spring large numbers of wildflowers bloom here, as well as in the Sparrow ground precinct- where a friends group have been weeding for a number of years with great outcomes. October and November are particularly good months to see the flowers and are valued by the many residents who walk through, from the rapidly growing surrounding areas.

Stop using urban pesticides

Value and improve Peadys Reserve and provide on-going maintenance especially the removal of weeds.

Weeding needs to be dramatically increased, and more revegetation with species native to the area, and improved pest management to remove foxes, rabbits, hares, cats, sparrows, and other non-native species.

SECTION 3: IDEAS AND ACTIONS

The Council wanted to understand what actions might be supported by the community now, in the next three years and in the next five years, noting that it is a five-year strategy.

The survey participants were asked to reflect on their initial priorities and to identify the key actions across the different time periods. The responses have been lightly themed and available below with the individual responses noted.



COMMUNITY ENGAGEMENT AND EDUCATION

ACTIONS NEEDED TO PROGRESS OUR IDEAS...	IMPORTANT ACTIONS FOR THE NEXT 3 YEARS...	IMPORTANT ACTIONS FOR THE NEXT 5 YEARS...
All the kids playgrounds are spaces for bio plantings with information.		
Survey health of wetlands, create community backyard science clubs, work with existing nature groups: Ballarat Botanikids, scouts, bird observers, etc.	Be very vocal, be aware, be sure to work with community in supporting, educating, and providing free indigenous plants for mass plantings in public places.	Create biodiversity regulations for every aspect of housing developments that have embedded community groups, working together to create sustainable solutions to address climate change.
Continue support for Ballarat Community Nursery to propagate indigenous plants for use by City of Ballarat, Landcare groups and Ballarat citizens.		
Promote and help run tree planting days in collaboration with local Landcare groups	Raise public awareness of the value of biodiversity via a range of community activities for adults and for children in school.	Organise a sustainability awards program that makes awards across all community sectors - residential neighbourhoods/schools, commerce and industry - to raise public awareness of the enormous importance of biodiversity and environmental conservation.

...continued overleaf

ACTIONS NEEDED TO PROGRESS OUR IDEAS...	IMPORTANT ACTIONS FOR THE NEXT 3 YEARS...	IMPORTANT ACTIONS FOR THE NEXT 5 YEARS...
Enforce cat and dog regulations, at the same time as developing a community education program about the impacts, particularly of cats. Enforce regulations about vegetation clearing such that which is occurring at Pax Hill. Appoint appropriate staff.	Review existing biodiversity information, then prepare and distribute to households a user-friendly information pack outlining biodiversity values, threats and actions that householders can take to protect and enhance.	Develop a "Friends" network across Ballarat and/or local networks where locals can become advocates for biodiversity protection and enhancement.
Get involved in community planting projects, aided by local government.	Continue planting. Protest against destruction of bushland.	More of the same.
Community engagement directed at our younger generation. Education programs engaging our youth. Set up environmental hubs around the township promoting what is happening. Start with one in front of the gov hub (Mair sat).	Engaging the younger generation to get outdoors and use our green spaces (focus on lake Wendouree 1st). Where is any interesting signage around biodiversity. Signs less words, more interactive activities.	A specific play space with a focus on the natural environment and the importance of Ballarat's environment and green spaces. City of Ballarat employing more staff with a focus on community educational engagement.
Volunteer planting	Volunteer planting.	Money for education.
Join local environmental groups, working more closely with Parks Vic, listen to Friends Groups who work "on the ground"	Strengthen council connections to local environmental groups.	As previously answered.
Contact local primary schools. Most focus on these areas as part of their curriculum.	Multiple plantings.	Consider endangered local flora and fauna development a strategy.
Caring for plantings made by earlier volunteers. Allowing the MOTHER TREES to survive with their ecosystems. Cutting down the biggest tree is not always the best plan for our established settings made by earlier volunteers.	Increase our local knowledge of soil biodiversity and how it positively affects our wellbeing.	Help the local waterways to stay healthy. Picking up rubbish volunteer days.

...continued overleaf

ACTIONS NEEDED TO PROGRESS OUR IDEAS...	IMPORTANT ACTIONS FOR THE NEXT 3 YEARS...	IMPORTANT ACTIONS FOR THE NEXT 5 YEARS...
Establish an Environmental Advisory Committee. Add an 'Environment and Sustainability' section to the City of Ballarat website. Establish a local environment grants program. Conduct an audit of biodiversity assets and prepare management plans.	Review and update the Environment and Sustainability section of the City of Ballarat website. Review and update the local environment grants program. Implement management plans for biodiverse reserves and roadsides.	Review and update management plans for biodiverse reserves and roadsides.
Continue to support the role of the city of Ballarat Indigenous Plant Nursery in growing and distributing local native trees, shrubs, groundcovers, and wetland plants.		
Highlight the value and beauty of local indigenous plants by supporting the continued development of the Indigenous Plants bed at the Ballarat Botanic gardens and establish an Arboretum showcasing (eventually mature) local indigenous trees at a suitable site – e.g., North Gardens Wetlands or Victoria Park.		
Support existing environmental groups by establishing a quick and easy funding application process for on-groundwork in public spaces within the municipality.	Promote the establishment of new community environmental groups e.g., Friends of..., Adopt	
and area etc. as outlined in Section 2 and organise an annual gathering to share ideas.	Continue with initiatives begun in earlier years.	
Work with nursery volunteers to expand the existing Indigenous Plants for Ballarat Gardens website www.federation.edu.au/ipbg to bring the total to 50 plants.	Develop a Revegetation and Landscaping with Indigenous Plants Guidelines booklet and/or online resource for use by Council staff and for possible public distribution.	Continue with initiatives begun in earlier years.

...continued overleaf

ACTIONS NEEDED TO PROGRESS OUR IDEAS...	IMPORTANT ACTIONS FOR THE NEXT 3 YEARS...	IMPORTANT ACTIONS FOR THE NEXT 5 YEARS...
Promote the groups and projects that aim to protect and improve biodiversity - make them more known so others can better understand local biodiversity (what it is, where it is, why it is important, how to help). More habitat. Healthy use of fire.	Make sustainable population a more prominent issue - we don't want endless growth (water supply is a critical factor for sustainable human population). Improve the use of fire (healthier burning practice). Understand vegetation & fire choices/relationship.	Nature-literate community; biodiversity programs in schools; climate adapted gardens/green spaces; baseline data for local species, especially significant species; more hollows; cat curfews and enclosures; habitat corridors; councillors adopt flora and fauna.
Community groups for weeding and revegetation need to be promoted more broadly to advertise dates and times to work. Use television advertisement, radio and newspapers to get more people involved.	Dramatically restrict cat ownership to protect native animals, eliminate the fox population which is devastating to all birds and small mammals. More support for wildlife rescue groups.	Purchase of land in key areas, for restoration back to native habitat for wildlife.
Identify parks and reserves which are currently in need of serious renewal such as Peady Park. Involve residents with restoration work. It is best to have a gathering onsite with locals to explain the reserve or park or bush setting with expert/s.	Plant more trees - educate residents on impacts of climate change on the natural environment. Less houses sprawling into bushland.	Plant more street trees, plant more native trees in the landscape. Work with farmers on making properties more connected to corridors for real-life.
Have a crew that directly communicates with and supports community groups.		



CONSERVATION AND RESTORATION



ACTIONS NEEDED TO PROGRESS OUR IDEAS...	IMPORTANT ACTIONS FOR THE NEXT 3 YEARS...	IMPORTANT ACTIONS FOR THE NEXT 5 YEARS...
We can be more proactive around enforcing the control of invasive plants. We can begin the process of introducing a cat curfew. We can identify areas for reestablishing habitat.	Controlling gorse and broom. Identifying areas to improve habitat.	Cat curfew.
Only plant native flora in new development spaces (nature strips, etc.). Demand that there are not only green spaces within proposed housing developments, but that there are green corridors that allow for the movement of species.	Develop an affective scheme to compensate landholders who facilitate the protection of native flora and fauna. Have experts that can liaise with all stakeholders and ensure that actions taken are more than tokenistic.	Plans to facilitate the growing population need to be seen through an environmental lens, e.g., Ballarat central have lanes behind housing blocks. Have these spaces planned for in new developments but fill them with flora to support diversity and movement.
Actual action. Remove the vast areas of wasted lawns and give way to local endemic planting.	Everything you can.	Not sure what difference 2 years makes (from 3 to 5), probably a waste of a question.
Stop culling/shooting native wildlife now! Kangaroos are not vermin. Propagation of local seed and planting from local seed sources helps maintain genetic diversity. Enforce roadside significant vegetation sites.	State forests are more than a public resource. They need greater protection from recreational users and firewood harvesting. And indeed logging!	Halt all native vegetation clearing. Council should invest in properties with significant tree cover adjacent to state or national parks for carbon offsets, to increase buffer zones, and to protect blocks currently containing native vegetation, wherever they are.
Protect and enhance existing natural environment examples weed control, bio-diversity improvement through plantings. Ensure developers follow the conditions of their permits and retain natural features and do not cause pollution. More signage and education.	Better development strategies to protect the natural environment. Identify areas of natural environment that require protection and renovation. Work with community groups that are interested in protecting the environment, provide funding so they can help.	Link existing remnant vegetation to create wildlife corridors. Work with Catchment Management, DEECA Parks and Landcare to improve outcomes. Provide funding for Landcare and Friends groups to improve the environment.

...continued overleaf

ACTIONS NEEDED TO PROGRESS OUR IDEAS...	IMPORTANT ACTIONS FOR THE NEXT 3 YEARS...	IMPORTANT ACTIONS FOR THE NEXT 5 YEARS...
Plant for native trees and plants	Stop approving developments of tiny land sizes. Backyards should be big enough to have a couple of trees.	Have a minimum requirement of land sizes.
Controlled burns by CFA. Increase the areas of protected species of flora and fauna. Actively patrol areas where it is known for illegal dumping of waste and cutting/selling wood in forestry. Use green energy systems like solar, wind turbines more.	(As stated in previous answer) - go green more and look after the environment.	As previous, cease any use of coal for energy. Maintain vegetation which is not at risk of out-of-control bushfires, and thus wiping out the fauna as well.
Weed control - particularly gorse. Strengthen cat curfew laws	Weed control in new housing estates.	Integrate wildlife needs into new housing estates.
Mass planting of native species of plants. There should be a council operated native plant nursery that sells native plants with a local provenance to the public at affordable prices. Immediately stop the planting of non-native plants.	Aggressively target invasive species of flora & fauna. Be prepared for new invasives such as, Indian Myna birds, that are making their way towards Ballarat. Get as many native plants in the ground as possible and encourage Ballarat residents to do the same.	Probably the same as what you would do in the next 3 years. This probably should have asked what should be done in the next 20 years.
Planting a variety of trees and shrubs.		
Making sure that people who walk their dogs take their dog poo home with them. This used to happen and now it seems to be something that no longer happens.		
Planting that will cope with global warming conditions.	Be aware of global warming and how it seems to be changing even our seasons.	Lower the city's carbon footprint.

...continued overleaf

ACTIONS NEEDED TO PROGRESS OUR IDEAS...	IMPORTANT ACTIONS FOR THE NEXT 3 YEARS...	IMPORTANT ACTIONS FOR THE NEXT 5 YEARS...
Make sure planning decisions enhance and incorporate wildlife corridors throughout the town, as a priority. Put more paths so people can walk to services and shops and have wider roads so buses can get in. Stop traffic in Victoria Park. Look after the wildlife more around Lake Wendouree. Put in more trees and diverse plantings in smaller playgrounds. Clean up Yarrowee River and Canadian Trail waterways.		
Put another bin around lake Esmond for rubbish near pontoon. Encourage nature strip plantings, clean guidelines and no cost. Continue your excellent street tree planting scheme.		
Value and improve Peadys Reserve and provide on-going maintenance especially the removal of weeds.	Clean up and continue to keep clean - Yarrowee River and Canadian Trail waterways and any other waterways. Encourage nature strip plantings, clean guidelines and no cost.	As previously answered.
Identify by mapping, urban areas where biodiversity links could be established between existing waterways, bushland patches, parks, reserves, and other public places. Develop planting plans for each of these corridors.	Develop an ongoing rotational planting scheme to revegetate and manage woody weeds to create and extend wildlife corridors and biolinks connecting bushland and riparian patches within the city.	Continue with initiatives begun in earlier years.
Mandate 24-hour cat containment.		
Allow and encourage nature strip plantings of wildflowers and native grasses.	Mandate 24-hour cat containment. Allow and encourage nature strip plantings of wildflowers and native grasses.	Increase the cover of native vegetation, street trees (that are native to the area) and expand the gardens for wildlife program in Ballarat.



INFRASTRUCTURE AND URBAN PLANNING



ACTIONS NEEDED TO PROGRESS OUR IDEAS...	IMPORTANT ACTIONS FOR THE NEXT 3 YEARS...	IMPORTANT ACTIONS FOR THE NEXT 5 YEARS...
Start planting native trees and shrubs in streetscapes instead of flame trees that block our drains in the winter.	Create a nursey to plant native seeds.	Start planting.
Remove the trees behind the Brown Hill Kindergarten. Scrap any plans to put in any more trees between the Brown Hill Cricket Ground and Ainley Street Bridge. Residence have said No, No and NO for years.	Ensure you develop fire brakes. Listen to the news of wildfire that have impacted communities. They call for better fire breaks.	Much better weed control in and along the Wallaby Track and the Yarrowee River. Remove the trees and realign the walking track that runs through the middle of the band oval to meander close to the river. Return the band oval to an open recreational space.
Make accessible to the public. Remove weeds. Create walking paths. Plant additional native trees etc. Remove weeds and	More trees in the Ballarat East area and Wendouree north of the train line.	More larger trees where possible.
Undertake long term actions to remove weeds encroaching into natural reserves, e.g., Mt Buninyong, and significant remnant vegetation on roadside reserves- consult local Landcare groups that know where the worst affected areas are.	Continue weed removal, tackling large infestations of gorse, blackberry and elder trees. Fund student and community education and field programs to help change the attitude of people, to respect and nurture our remaining natural environment.	Continue to remove weeds, they aren't a short-term problem. Continue to plant more local indigenous plants. Continue to educate our community to respect and care for nature.

...continued overleaf

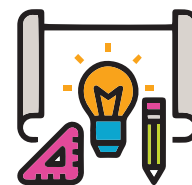
ACTIONS NEEDED TO PROGRESS OUR IDEAS...	IMPORTANT ACTIONS FOR THE NEXT 3 YEARS...	IMPORTANT ACTIONS FOR THE NEXT 5 YEARS...
Government and council support is really very needed. The budget the government provides for the environment is laughable. Never mind what they do for our wildlife, much of which is endangered. Governments and local Councils really need to step up.	Work on the climate emergency. A degraded planet is not a good place to live.	As previously answered.
Eliminate use of non-endemic plant species on public developments... e.g. palm trees on sturt sat/civic	Better public transport networks, smaller electric busses - less seats and more routes that are better designed, until the demand increases at least.	Plan for better suburban layouts, integrated park lands / reserves with a variety of ecosystems where appropriate (wetlands, grasslands and bush).
Build off road cycle paths to the city from every direction.		
Under the Barkly Square masterplan, there is an area bordering Specimen Vale and Britannia Reserve dedicated for indigenous planting. If implemented, it would provide a native corridor close to the city centre for the insects, animals and birds to return.	Implement water conservation measures across the region before it becomes a necessity. Still see people watering their gardens/lawns with hoses daily even when it's been raining, or rain is forecast!!	Educate people of the benefits of getting out in nature. It can take extensive research to find out where you can find nature. It needs to be promoted/advertised/ signposted. I guarantee that 90% of the population have never visited the Woowookarung.
Stop destroying natural ecosystems for progress.	Plant trees.	Build ecosystems.
Plant trees - do it now! it's simple and affordable and there are plenty of available spaces for you to do so.	Reclaim pine plantations for native forest. That will attract more wildlife and allow the community to have access to more outdoor walking opportunities.	Reduce car dependency by increasing pedestrian access and improving public and active transport, like improved bike infrastructure and facilities.

...continued overleaf

ACTIONS NEEDED TO PROGRESS OUR IDEAS...	IMPORTANT ACTIONS FOR THE NEXT 3 YEARS...	IMPORTANT ACTIONS FOR THE NEXT 5 YEARS...
Allocating more land not rezoning and developing "green zone" areas. These were set aside by decision makers in prior years.	Carefully looking at the whole, as in whole area of Ballarat, and ensuring that we have at least 40% green cover, this does not just include tree planting. Ensuring that we have protection for all life that has been here prior to our settlement.	Review penalties for deliberate destruction by developers. Not putting insignificant monetary fines on destruction. Cancel access to developments. It must be made clear by an overall strategy set down by council. Ballarat can be set as a model for future.
Prioritise creating healthy water ways - don't allow real estate development close to waterways. Plan for wildlife corridors throughout the suburbs - creative town planning and support volunteers.		
Build bike paths.	Start fixing up the Yarrowee Creek. Plans to remove rubbish, removal of blackberries and other weeds. Don't approve housing development within close proximity of creek.	More parks and open space and conserve what we already have.



PLANNING AND DEVELOPMENT



ACTIONS NEEDED TO PROGRESS OUR IDEAS...	IMPORTANT ACTIONS FOR THE NEXT 3 YEARS...	IMPORTANT ACTIONS FOR THE NEXT 5 YEARS...
Currently the planning controls for protection of native vegetation are not implemented. Planning developments are being allowed without considering the full implication of the proposal, and then subsequently applications to remove vegetation are approved.	Put interim controls in now to stop native vegetation destruction, until the improved controls are in place.	Think about opportunities to work more collaboratively with water authorities, CCMA's to improve our waterways. Things like reducing our per capita water consumption will help in the longer term, particularly in the face of climate change (50% reductions).
Far greater consideration/responsibility on part of authorities to view and deliver planning decisions through the biodiversity prism, e.g. The Gong plan in Buninyong requires far greater biodiversity credentials than presently proposed.	Community-wide promotion/education... get to everyone, the informed and the ignorant, not just the usual suspects who rally to the cause... a fair-dinkum campaign of engagement.	Get the implementation programs well underway.
Monitor and implement existing regulations pertaining to new building sites. Ensure developers follow such and increase fines. Currently not strong enough it would appear. Revise all regulations to maximise diversity.	Make a plan and stick to it. Don't avoid making decisions and reduce the number of consultant reports. Make decisions!	Focus on measures related to a drier climate. Avoid developments in forested areas, maintain water sources (limit extraction of spring water, reduce lighting to assist nocturnal animals).
Plan where to plant trees more usefully.		
Plan to stabilise the number of people in the region at about the current level. Give the Aboriginal people some real control over fire safety of our communities.	Give the Aboriginal people some real control over fire safety of our communities.	

...continued overleaf

ACTIONS NEEDED TO PROGRESS OUR IDEAS...	IMPORTANT ACTIONS FOR THE NEXT 3 YEARS...	IMPORTANT ACTIONS FOR THE NEXT 5 YEARS...
A re-evaluation of the expansion plans for Ballarat to take into account nature, reduction of traffic, tree cover and green spaces.	Investment in connected public transport, connection of wild areas, reduction in spraying.	Improve the planning for Ballarat's growth to include clean transport infrastructure and natural areas.
Resist the power of the developers and allow wider natural corridors	As previously answered.	As previously answered.
Regulate very strictly land clearing for new developments. Inclusions in plans for preservation of bush land/ grasslands/ creeks. Council needs to listen to environmental groups/ engage with them. These groups are full of folk with knowledge of conservation	Innovate, design, and create successful, recycling here in Ballarat. Create council facilitated community environmental discussion groups to glean all the expertise in the community and set goals and plans in these groups. Overhaul development laws/ rules.	Strong action on making development environmentally sustainable, a very visible nature/ wildlife protective arm as part of council, which is consultative, listens, collaborates/ advises/ educates; engage youth and community in making decisions.
encouraging landowners to partner conservation efforts. policies to encourage steps towards 100% renewable energy. trees and shrubs should be attracting bees/ insects and birds too	>75% solar/renewable energy in the city. Biodegradable compost dumps and processing. Soft plastics recycling.	100% renewable energy for Ballarat.
Council employs more staff on environmental ground crews to increase the amount of indigenous planting and weed control undertaken on public land within the municipality.		
Get more manpower. Pay for more council workers, advertise days the public can help and give financial help to local environmental groups.	Remove the unnatural bases lining from some of Ballarat's creeks and rivers.	Create more habitats for wildlife by planting and protecting. Encourage public to use and care for those spaces.



POLICY AND REGULATION



ACTIONS NEEDED TO PROGRESS OUR IDEAS...	IMPORTANT ACTIONS FOR THE NEXT 3 YEARS...	IMPORTANT ACTIONS FOR THE NEXT 5 YEARS...
Our priority is sustainable and preventative actions. Economic outcomes must be second to maintenance of the biodiversity. A high standard must set and adhered to, in every aspect of development and works.	Stop developments which are turning biodiverse areas into 'deserts'. More creative solutions MUST be developed. All areas of our economy must have biodiversity and sustainable principles at the fore.	More of the same. Create a culture of environmental integrity.
Funding. Resources. Policy change.	Protect what we have.	Build on what we have.
Support and funding needs to be made available for projects for weed removal, replanting, rubbish removal and ongoing maintenance into the future so the initial good work is not left for the weeds to take over again.	Identify priority projects, funding requirements for these projects and what resources will be required. Apply for funding and resources and commence projects according to priority.	Continue to work on priority projects and maintain the sites that have been completed.
Incorporate the Ballarat Biodiversity Strategy into the Ballarat Planning Scheme.		
Change policy around nature strips to allow for planting of approved plants.	Eradicating weeds in all natural spaces. Support groups like, Friends of Specimen Vale, to continue to look after these spaces as well as utilising City of Ballarat employees.	Rewild the Yarrowee River where it is a bluestone canal. Conduct similar project on Gnarr Creek.



SUSTAINABILITY AND GREEN PRACTICES



ACTIONS NEEDED TO PROGRESS OUR IDEAS...	IMPORTANT ACTIONS FOR THE NEXT 3 YEARS...	IMPORTANT ACTIONS FOR THE NEXT 5 YEARS...
Support local regenerative farmers and eat seasonally.	Stop chemical pest and weed control, eat locally produced food, create a variety of events in our parks and forests.	As previously answered.
Promote plant-based eating & industries. Invest in educating the residents about the value of protecting wildlife & their habitats. Create sustainable industries that upcycle waste products.	Reduce animal agriculture. Stop destroying wildlife habitat & building houses on it. Upcycle waste products.	Reduce animal agriculture. Stop destroying wildlife habitat and building houses on it. Upcycle waste products.
No littering programs. Make developers comply with environmental rules. Make more stringent rules to help the environment		
Courageous carbon neutral targets; and planning and funding assistance, in sustaining employment for workers in 'loss' industries; to consciously pivot duties, knowledge, specialisation & related engagements into sustainable practice & product output.	I think that you could have had more character allowances in your survey, as I was only able to address my first item for question two. In the next three years we really need to acknowledge and act on this knowledge, that we are in a climate emergency.	National Carbon Neutrality by 2028 - Be bold, be brave, show leadership, innovation, and modelling, locally and internationally. Make this country the gold standard and undeniable model of stewardship, and environmental recovery.
Add extra recycling bins on the streets and educate people how to properly recycle. Offer public transport vouchers to encourage use. And speak to local Indigenous communities to utilise their knowledges.	(As per previous response)	Invest in easy access and engaging public transport and recycling methods to enthuse individuals.

...continued overleaf

ACTIONS NEEDED TO PROGRESS OUR IDEAS...	IMPORTANT ACTIONS FOR THE NEXT 3 YEARS...	IMPORTANT ACTIONS FOR THE NEXT 5 YEARS...
Build and maintain a rubbish trap on the Yarrowee near Darling Street. increase size of this comment field.!	Adopt more stringent environmental guidelines for planning approval.	Encourage and support community participation in environmental work.
Phase out pesticides by investigating safer alternatives e.g., mulching, hand weeding & foam stream (look at councils in Europe & UK). Reduce light pollution (has a known impact on human and environmental health particularly around wildlife areas. Red light.	Connect current cycling network across central Ballarat, provide funded cycling classes, particularly to school age children, to improve skills and confidence. Source a fleet of bikes and e-bikes that can be hired centrally for residence.	Restore indigenous flora, provide ongoing maintenance to land to ensure survival. Invest in garden maintenance that can nurture landscape instead of indiscriminate mowing & spraying. A Landcare team / biodiversity project manager? Practice water saving.
More bins (specifically ones birds can't open), better paths, containing of invasive species and creating more spaces for just native species to thrive.	Create easier and better ways for people to get rid of their rubbish and recycle what they can, e.g., adding more glass recycling bins and making green bins a more widespread thing. Picking up litter from natural environments.	Have litter down by over half, promote gardening and growing of native plants, have more accessible recycling stations, getting people into schools to teach about the environment and small stuff they can do easily.
Go vegan.	Go vegan.	Go vegan.



SECTION 4: WHAT CAN YOU DO TO MAKE A DIFFERENCE

The Council sought to understand what actions individuals are willing to take to improve their local environment. Participants were asked to consider their home, neighborhood, workplace, school, or social spaces and what impact they could have?

Survey participants reflected on these areas and their responses, lightly themed, are provided below along with individual comments.

ADVOCATE FOR POLICY CHANGE

Native plants in home gardens and nature strips. Stop development in sensitive areas e.g., koala habitat, waterways, and public land.

The council make more decisions regarding the environment than I do.

Buninyong is fortunate to be surrounded by green spaces including our botanical gardens and reserves. More indigenous plants grown as street plants with communication between residents and council horticultural staff, not pencil pushers.

All landowners have to make a commitment to the area they live in.



COMMUNITY ADVOCACY AND ENGAGEMENT

We need a council who listens to and is sympathetic to protecting our natural environment. I was recently very rudely told to "google it" by a council officer when I questioned why native vegetation was being destroyed without a permit.

Join groups (hard to find out who is responsible and who to contact), for example Peadys Reserve. Lead by example.

Everyone can make a difference at some level. I am involved in many organisations.

Create small group chat.

Instill a sense of pride in the residents. Litter everywhere and the graffiti on structures throughout the region, indicates disrespect for where we live and work. Without pride implementing any strategy will be difficult.

I already volunteer with the 'Sparrow Ground' friends group.

Get involved, join a friends or Landcare group, go to working bees and tree plantings, clean up days, report rubbish dumping and pollution.

As a member of local Landcare group, I can make a difference.

Join a number of related organisations and become active in making the difference I talk about. Walk the talk.

Community groups are very important for the health of the natural environment where we live. If people understand why the natural environment in their own neighbourhood is important, they will support projects and even get on board to assist.

Be part of community consultation; be engaged in revegetation working bees, develop my own garden as a garden for wildlife, support the local wildlife shelter, use my artwork as a way to build awareness.



EDUCATION AND AWARENESS



Spread the word: 3,750 residents in Buni; 500 families represented at the Primary School & Kindergarten; Fed Uni; 60+ community bodies (sport & rec, church, services & welfare groups, etc.) Get more locals into nature to see & experience for themselves.

I can educate my friends, my family, my community group on the biodiversity benefits, through their choices of what they plant in their school, in their garden and on the streets.

Inform people about wildlife issues.

Provide volunteer opportunities for planting for local schools.

The nursery will continue its educational role by supporting other volunteer community groups whose aim is to promote indigenous plants – e.g., Gardens for Wildlife, Australian Plant Society, Landcare, Friends of Ballarat Botanic Gardens etc. Support is provided in the form of nursery tours and talks and supplying plants for display and giveaway at community events.

Offer my knowledge and experience to individuals and organisations who share my interest in conservation, biodiversity and habitat restoration. Actively engage with council on policies and plans relevant to environment and sustainability.

Share knowledge, resources, and information.

I can be more involved in the leadership team and talk to teachers and students about what can be done. We can then do stuff like clean-up-days and make it fun, by making it a competition.

NATIVE PLANTING AND BIODIVERSITY



Plant more varied gardens for flora and fauna. Use nature strips to increase biodiversity, reduce contaminants in environment by offering recycling options for paints, monitor waste from building sites, kerbside pickups.

Plant more native plants to add to biodiversity protection for wildlife present and attracting more.

I grow trees for Tree project, a fabulous organisation. I am a member of a local “friends” group which is revegetating a degraded waterway near where I live. In just five years we’ve made a big difference.

I plant trees and weed.

Reforest the land I am on with native species that enhance biodiversity, rehabilitating soil fertility (organic content).

Plant native species in my garden, provide water for birdlife, keep my cats indoors.

Plant.

Improve my backyard environment.

Nursery volunteers will continue to work towards increasing the range and number of local native plants available for revegetation and gardening projects.

Indigenous planting to attract insects/birdlife and reduce watering.

Plant trees. Work on my local native reserve.

PROMOTE SUSTAINABILITY AND REDUCE ENVIRONMENTAL IMPACT



Keep the use of pesticides to a minimum. Plant native at home. Make my child and the children I work with see protecting the environment (not littering, not destroying) as being worthwhile, not just a punishment or a chore.

Stop buying imported, packaged and processed food.

I can promote plant based, environmentally friendly foods & products.

Getting involved in nature conservation and less car use.

I pick up rubbish. I've planted over 1000 trees on my property and will do more. And I'm going to our local school.

Stop using plastics, reduce waste by buying organic, recycle better, maintain our land so it is safe from fires.

Not litter.

Walk to work.

Ride a bike instead of taking the car but feel safe when doing so.

We are car free so walk and cycle everywhere. I have started a green team at our local school.

I think the first 90% of the problem is easier to solve than the last 10% and to that end, we could rebuild our food supply chains to be plastic free and totally organic and sustainable.

Collect rubbish.

We bike and walk by choice wherever we can, but the limited walking paths and bike paths that don't connect together make it hard. We are committed to planting native flora species and buying produce from local farmers.

The biggest difference any individual can make to improving the environment is to go vegan.

Council does zero in promoting this simple action that can have such a profound effect on our environment and efforts to combat the climate emergency.

Signing the Plant Based Treaty would be a good start.

Rubbish collection, weed pulling. Walking and cycling don't drive your car. You don't see the problems when you are whizzing past in your car seat .

VOLUNTEER WORK AND GROUP PARTICIPATION



Volunteer with environmental organisations.

I am an active member of a local Landcare group, undertaking planting, maintenance, and weeding activities. I would love the City of Ballarat to liaise with Landcare groups on how they can best support our natural environment.

Increase my participation in volunteer environmental work. Reduce car use and carbon footprint.

Be a reliable volunteer and custodian of our shared natural environment.

I'm going to join a Landcare group.

Corporate volunteering opportunities such as tree planting and weeding; record sightings of threatened species; plant native species in my garden; join an existing nature/environment focused group such as Friends of Canadian Corridor.

Working bees at the creek.

Nursery volunteers will continue to look for opportunities to distribute indigenous trees, shrubs, groundcovers and wetland plants to schools and community groups such as Scouts, Churches, Neighbourhood Houses, Community gardens etc.

Several nursery volunteers would be eager to contribute time and expertise to assisting Council officers develop a Revegetation and Landscaping with Indigenous Plants Guidelines booklet and/or online resources.

Work with students to ensure that our youth commit too.

I volunteer planting trees along the Yarrowee Creek.

WEED CONTROL AND HABITAT IMPROVEMENT



Every time I go for a walk, I remove weeds from our local state forest. So far more than 400 pine seedlings and many clumps of bluebell creeper.

I have been spraying gorse on my property and with neighbours on their properties and roadsides for 30 years. The benefits are obvious, and this attracts participation.

I want to help make the area between the Brown Hill Cricket Club and Ainley St Bridge more biodiverse, like I have behind my place, without destroying our open spaces.

I can do some manual weeding.

I can remove weeds that are easy to deal with. If I'm going for a walk and see a small broom plant or pine sapling, I can easily pull it out of the ground. I can plant native plants in my garden and encourage native wildlife.

I have already started planting more natives on my property. I am controlling weeds and improving wildlife habitat in my garden.

I could improve the immediate environment by planting endemic species.

YOUNG PEOPLE'S FORUM

PURPOSE

The forum allowed participants aged 15 – 25 years of age to identify, discuss, and documenting ways to enhance the health of Ballarat's natural environment and biodiversity.

The purpose of the workshop was to:

- ♦ Identify ways to improve the health of Ballarat's natural environment.
- ♦ To listen and build ideas for Ballarat City Council on the Biodiversity Strategy.
- ♦ Prepare how ideas would be shared back to Council.

ATTENDEES

Attendees included 20 community members and two representatives from Ballarat City Council.

The workshop was cofacilitated by Kelly Ann Blake from Wadawurrung and Lyndal Mackintosh from MosaicLab.

AGENDA

TIME	AGENDA
10.00AM	Welcome & smoking ceremony
10.30AM	Our work so far & today's agenda
10.55AM	A yarn about biodiversity
11.35AM	Break time! (15mins)
11.50AM	OUR ideas
12:20PM	Sharing our big ideas
12:50PM	Next steps and goodbye
1:00PM	Close



SMOKING CEREMONY

Kelly Ann Blake, Wadawurrung Traditional Owner, conducted a Welcome to Country and Smoking Ceremony looking out to Mt Warrenheip.

Participants' reflections from the ceremony highlighted the importance of unity, stewardship, and the collective responsibility to care for the land and its creatures for future generations.

WELCOME AND GETTING STARTED

Participants were welcomed into the space and provided with an overview of the agenda and an explanation of the intention of the workshop.

OUR WORK SO FAR

Heath Stewart, Senior Sustainable Policy and ESD Officer at Ballarat Council, presented an overview of the council's progress on the Biodiversity Vision Statement and discussed the pressing challenges confronting the community.

ENGAGEMENT RESULTS

CONNECTING

Participants engaged in a connecting activity where they supported each other in coming together. They began by forming a sociometric arrangement, lining up by age and then forming a circle, arranging themselves from oldest to youngest. In this circle, they were prompted to consider the concept of 'biodiversity' and share their interpretations.

Following this, participants were encouraged to find someone they hadn't met before and discuss their favorite place for connecting with the bush, nature, or Country. They were prompted to reflect on what made this place special to them.

CONVERSATIONS AND YARN

After introducing the goal of the biodiversity strategy: to increase the biodiversity of the area so that a variety of plants and animals exist and work well together. Participants were prompted to consider, "How can we actively improve our natural environment?" Facilitators then led a brief whole-group discussion.

Subsequently, in small groups, participants actively exchanged and discussed their ideas. They later reconvened as a whole group to consolidate these ideas into the top six priorities for further consideration and action.

Top 6 Priorities generated

- ♦ Preservation and restoration of Green Spaces
- ♦ Education, involvement, learning and awareness
- ♦ Community programs and engagement
- ♦ Environmental and sustainable development
- ♦ Pro- Active thinking
- ♦ Encouraging 'stewardship' to enhance green spaces and feeling ownership over the land



BUILDING ON OUR BIG IDEAS PART 1

Each of the six priorities, generated in the previous activity, was written on separate poster paper.

Participants worked with new partners to go through each poster and contribute ideas related to the respective priority.

IDEA	WHY IS THIS IMPORTANT	WHAT ACTIONS WILL HELP
Preservation and restoration of Green Spaces	Allows more people to have connection to nature.	Connect green spaces and remanent vegetation patches.
	Allows us to work with existing locations.	Involve the next generation (young people).
	Preserve for next generation - allow ecosystem services to be carried out.	Waste management / litter.
	Healthy country healthy people.	Energy efficiency / green energy options for all (subsidised)
	Protects existing ecosystems before they are degraded.	Involving local indigenous people.
	Enhances vulnerable ecosystems.	Community run landscapes.
	Allows people to be educated about the environment in the environment.	Making green spaces (public transport, buses, disability, access, support systems).
		Smarter developments - leading to higher preservation -
		Native species in urban areas
		Including native plants in spaces, maintaining natural habitats.
		Tree planting and similar programs.
Education, involvement, learning and awareness		Policies to prevent mass destruction of native land.
	Education will help people understand why caring for the environment is important.	Incentivising programs in the environment, so that they can put their education to use.
	Education in younger people will create the future conservationist to help sustain our future.	Programs that educate people about the environment and their impact on it, especially when they do not know about it.
	Teaching people to value the environment	Hands on education.
	Understanding what the environment does for us / give back / eco systems services.	Collaborative education - not talking at people.

...continued overleaf

IDEA	WHY IS THIS IMPORTANT	WHAT ACTIONS WILL HELP
Education, involvement, learning and awareness <i>...continued</i>	Creates a safe environment to learn about it e.g. no putdowns or feeling ashamed.	Focus on things to improve and do better rather than things being done wrong and shaming people.
	Help open minds about environment, raise awareness	Respectful teaching - being open minded.
	It will increase overall interest, knowledge and engagement.	Increased access
	Reduce stigma around environmental education - both around people who do and do not to get involved.	Reaching everyone - making it accessible and individualised for each group
		Education from a young age - take kindergarteners into nature and teach of its importance and continue this throughout to increase interest as they get older.
		Webinars, podcasts, online resources (free!). Funding on the tertiary and secondary levels.
Community programs and engagement	Raise awareness / encourages people to take action.	Sports groups engagement with nature (big part of community). Teaching people to value nature. Grants / funding for community initiatives and groups.
	Wicked problem everyone needs to be involved / have a say. More likely to reach people and have people take up actions if they are listened to.	Integrate into education system. More than one way. Social media advertising. Environmental groups in school.
	People are more likely to care if involved - could help ignorant people better understand.	Green spaces and community gardens! Government funded gardens / green space - convenience!
	Don't know, don't care mentality - potentially show them how they incorporate it into their personal lives and practices.	Marketing / promoting in a careful and thoughtful way to reach specific groups.
	Connects to education programs, enhances involvement in education systems.	Community engagement would incentivise it further for the larger community.
		Working towards shared goals.
		Urban reserves.

...continued overleaf

IDEA	WHY IS THIS IMPORTANT	WHAT ACTIONS WILL HELP
Environmental and sustainable development	Sustainable way to live.	Advertising, policies, community gardens. More education: architect courses etc, involving sustainable strategies / designs.
	Promotes preservation of natural environment.	Acknowledge heritage of land.
	Protects water systems.	Areas for greenery in developed areas.
	To ensure climate change is reduced and areas are naturally sustainable. Links to being proactive and improving current locations for better pay-off in the future.	Preserving ecosystems - limiting light pollution (because of insects) from electric billboards.
		Consulting with experts and planning to ensure what is planted can stay there long-term.
		Built up, not out - reduce urban sprawl. Waste management and not littering. Managing pet costs (not free roaming).
Pro-Active Thinking	To create progress.	Having conversations and engagement with different communities in an inclusive way of their views.
	Optimise future outcomes.	General incentives. Better urban planning.
	Community inclusion.	Plan ahead.
	To make everyone feel heard and seen increasing want to be involved. To reduce stigmas to so with action to increase Biodiversity and environmental health.	Programs that positively influence young people.
	Breaking stigmas.	Having programs for all ages and cultures, getting everyone's perspective.
	Easier to prevent a problem than fix it.	Subsidies to incentivise green choices.
	Could improve agricultural fields	Promoting local, sustainable businesses.
	Brings communities together - harbours healthy relationships around conservation!	Environment - committees.Meetings: all ages, all sides, all experiences, all walks of life.

...continued overleaf

IDEA	WHY IS THIS IMPORTANT	WHAT ACTIONS WILL HELP
Encouraging 'stewardship' to enhance green spaces and feeling ownership over the land	Taking ownership - makes the community feel inclined to get involved.	Community gardens and governed by people / other spaces and junior garden for children.
	Encourage community togetherness.	Tree planting all ages - made fun - getting communities engaged so they know it is also up to us, on the individual scale, not just councils through programs.
	Sense of belonging - gives drive to community - affirms current practices.	More programs to reduce food waste e.g., hidden orchard, food is free laneway.
	Gives everyone a role in the community.	Grants.
	Acknowledges connection to land.	Urban tree stewardship / caring for tree in front of your house.
	Take responsibility for land that they are on.	Significant tree registers - promote and celebrate these trees!
	Increases ability to meet others with similar views and values but also new and different people.	Community run competitions.
	People take responsibility for what they have.	
	It is not one persons or group's problem it is everyone's!	
	Easing workload.	
	Encourage nature appreciation and valuing.	



BUILDING ON OUR BIG IDEAS PART 2

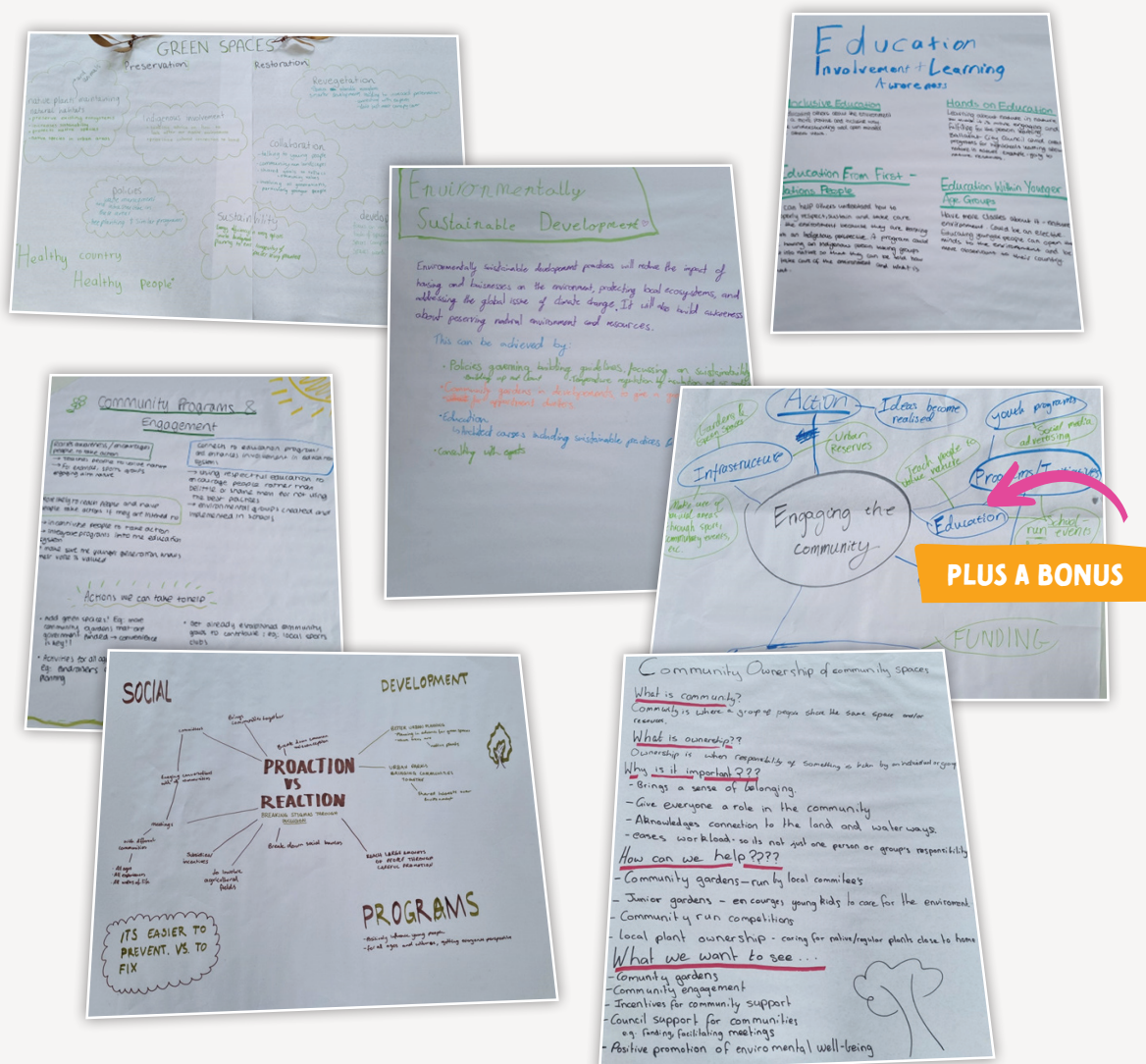
After each pair reviewed all six priorities, the group split into small writing teams. Each team was assigned one priority to capture, layout, and present the ideas associated with it.

The groups were asked to include:

- ♦ What this big idea looks like (write or draw and describe it in detail).
- ♦ Why this idea is important.
- ♦ Actions that will help make this idea work.

Kelly-Ann Blake from Wadawurrung provided support for participants to delve into their ideas and was available for discussions regarding their implications for Wadawurrung people.

POSTER OUTPUTS – TOP SIX PRIORITIES



PRESERVATION AND RESTORATION OF GREEN SPACES

Preservation

Native plants and animals maintaining natural habitats

- Preserve existing ecosystems
- Increases sustainability
- Projects native species
- Native species in urban areas

Indigenous involvement

- Seeking advice on how to look after our native environment
- Prioritise cultural connection to land

Policies

- Waste management and infrastructure in these areas
- Tree planting and similar programs

Restoration

Revegetation

- Enhances vulnerable ecosystems
- Smarter developments leading to increased preservation
 - Connecting with experts
 - Don't just meet canopy cover

Collaboration

- Talking to young people
- Community run landscapes
- Shared goals to reflect community values
- Involving all generations, particularly younger people

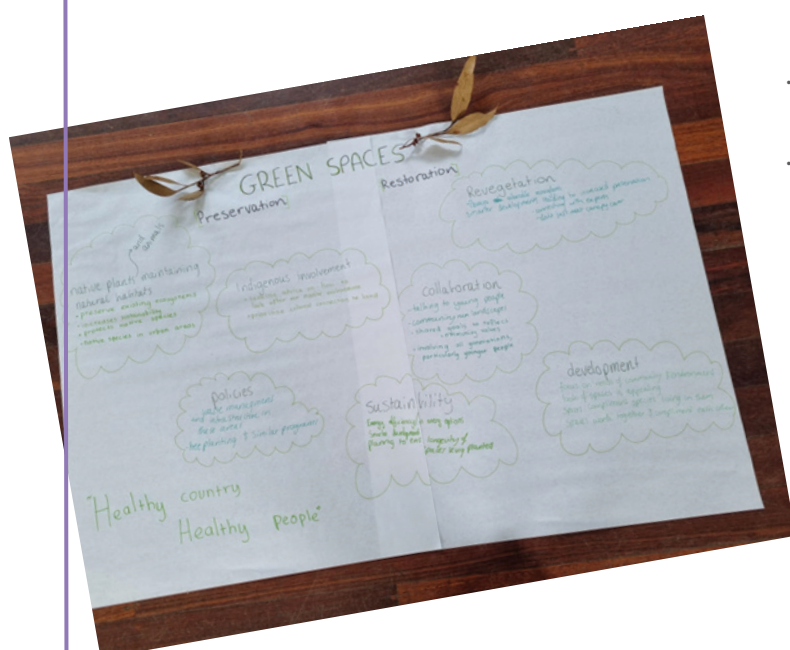
Sustainability

- Energy efficiency / energy options
- Smarter development planning to ensure longevity of spaces being planted

Development

- focus on needs of community and environment look of spaces is appealing
- Spaces compliment species living in them
- Spaces work together and complement each other

"Healthy country, Healthy people"

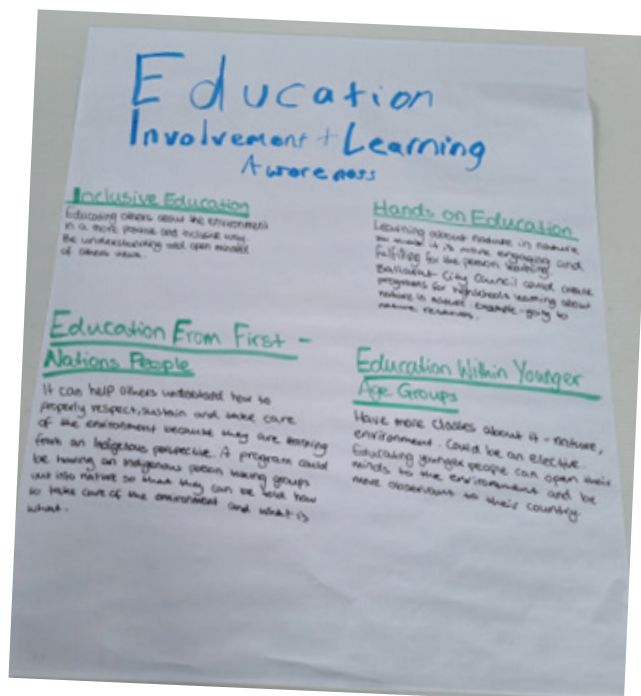


Inclusive Education

- Educating others about the environment in a more positive and inclusive way
- Be understanding and open minded of others views

Hands on Education

- Learning about nature in nature so that it is more engaging and fulfilling for the person learning.
- Ballarat City council could create programs for high schools learning about nature: example - going to nature reserves.



Education from First Nations People

- It can help others understand how to properly respect, sustain and take care of the environment because they are learning from an indigenous perspective.
- A program could be having an indigenous person taking groups out into nature so that they can be told how to take care of the environment and what is what

Education within younger age groups

- Have more classes about it - nature, environment. Could be an elective.
- Educating younger people can open their minds to the environment and be more observant to their country

COMMUNITY PROGRAMS AND ENGAGEMENT

Raises awareness / encourages people to take action

- Teaches people to value nature
- For example sports groups engaging with nature

More likely to reach people and have people take action if they are listened to

- Incentivise people to take action
- Integrate programs into the education system
- Make sure the younger generation knows their voice is valued

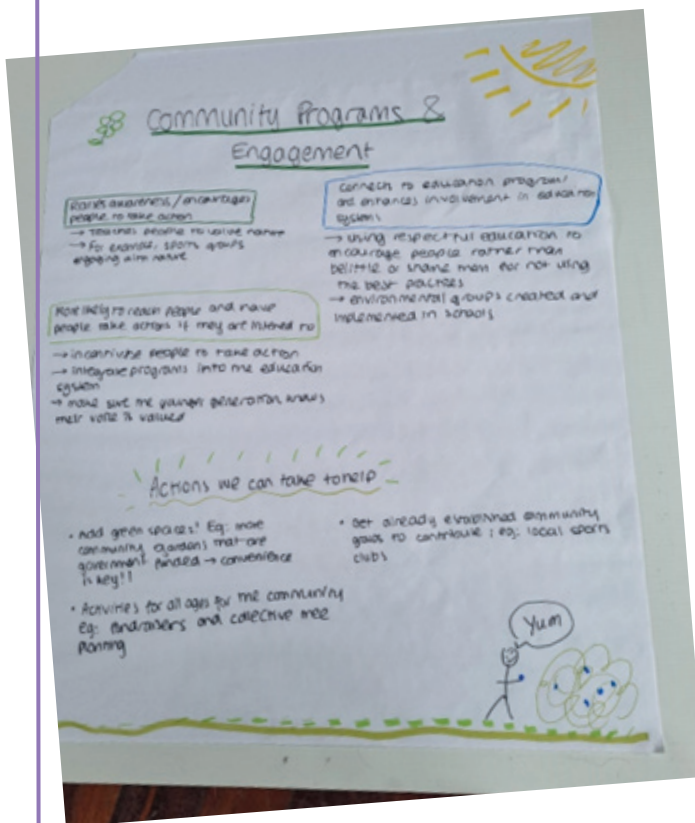


Connects to education programs and enhances involvement in education systems

- Using respectful education to encourage people rather than belittle or shame them for not using the best practices
- Environmental groups created and implemented in schools

Actions we can take to help:

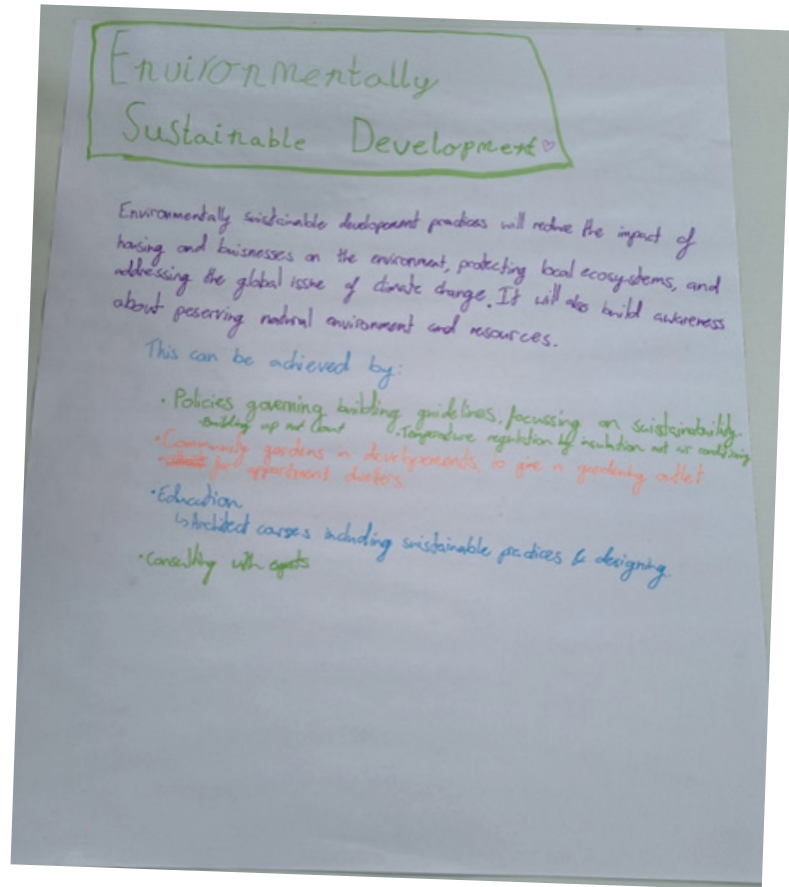
- Add green spaces! E.g. more government funded - convenience is key!
- Activities for all ages for the community e.g. fundraisers and collective tree planting
- Get already established community groups to contribute, e.g. local sports clubs



ENVIRONMENTAL AND SUSTAINABLE DEVELOPMENT

Environmental and sustainable development

Environmentally sustainable development practices will reduce the impact of housing and businesses on the environment, protecting local ecosystems and addressing the global issue of climate change. It will also build awareness about preserving natural environment and resources.



This can be achieved by:

- Policies governing building guidelines, focusing on sustainability
- Building up not out
- Temperature regulation by insulation, not air-conditioning.
- Community gardens in development to give a gardening outlet for apartment dwellers.
- Education - architect courses including sustainable practices for designing.
- Consulting with experts

PRO-ACTIVE THINKING

Pro action vs Reaction

Social

- Brings communities together
- Break down common misconceptions

Committees:

- Emerging conversations with all committees
- Meetings with different communities
- All ages - all experiences - all walks of life

Subsidies / incentives

- To involve agricultural fields
- Break down social barriers
- Reach large amounts of people through careful promotion

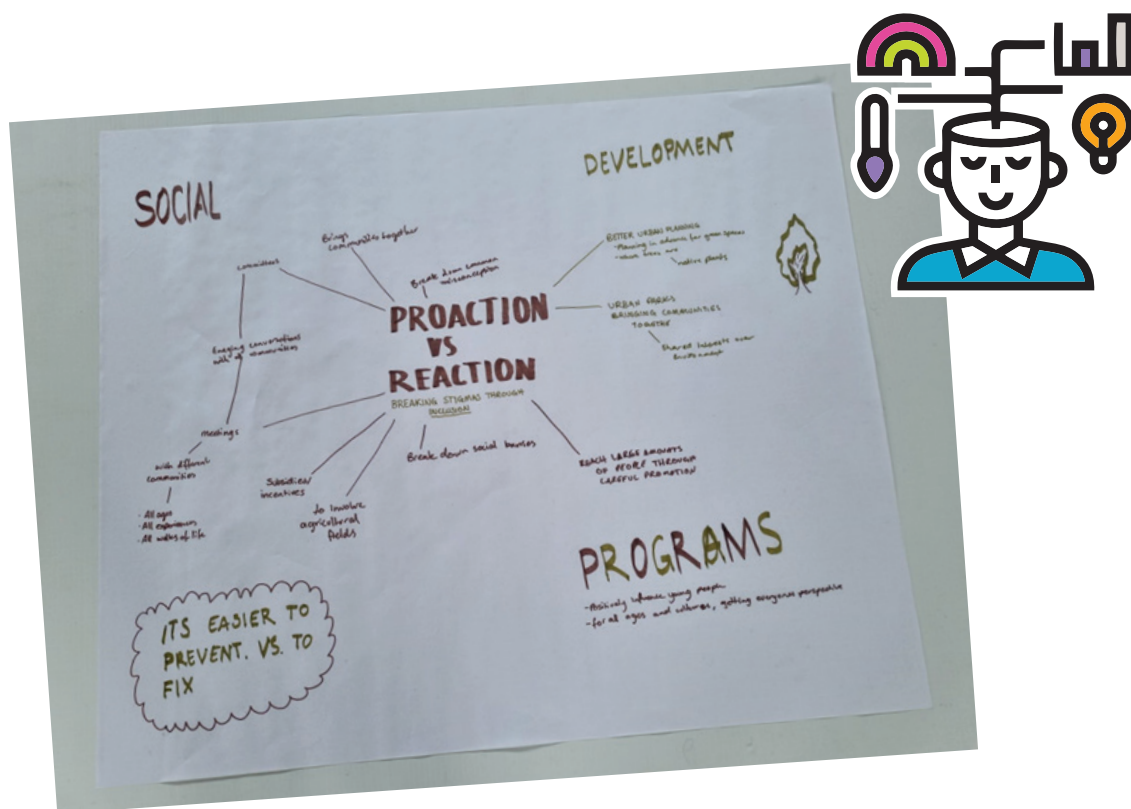
Development

- Better urban planning
 - Planning in advance for green spaces
 - where trees are / native plants
- Urban parks bringing communities together
 - shared interests over environment

Programs

- Positively influence young people
- For all ages and cultures, getting everyone's perspective

It is easier to prevent versus to fix



ENCOURAGING 'STEWARDSHIP' TO ENHANCE GREEN SPACES AND FEELING OWNERSHIP OVER THE LAND

Community ownership of community spaces

What is community?

- Community is where a group of people share the same space and /or resources

What is ownership?

- Ownership is when responsibility of something is taken by an individual or group

Why is it important?

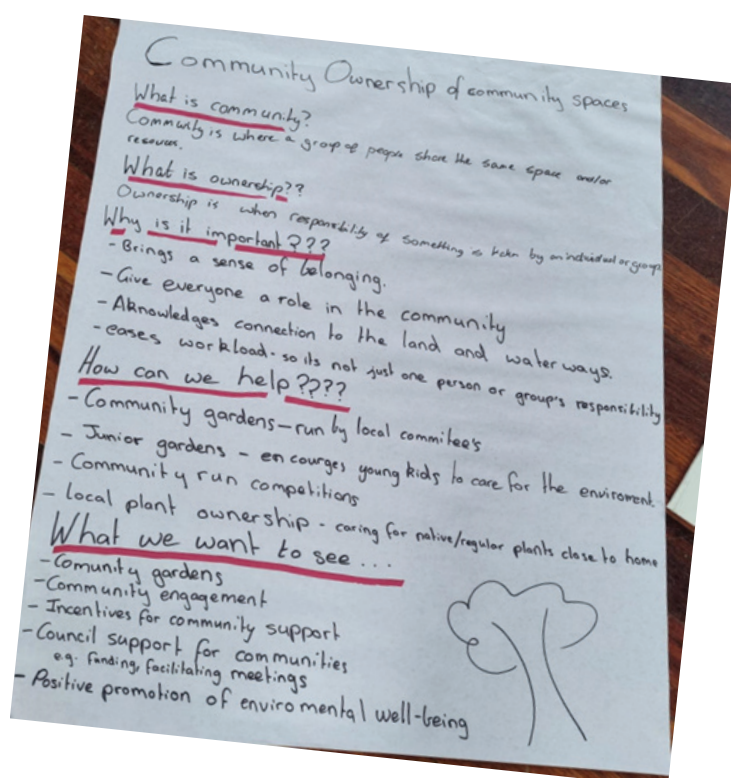
- Brings a sense of belonging
- Gives everyone a role in the community
- Acknowledges connection to the land and waterways
- Eases workload so it is not just one person or group's responsibility

How can we help?

- Community gardens - run by local committees
- Junior gardens - encourages young kids to care for the environment
- Community run competitions
- Local plant ownership - caring for natives /regular plants close to home

What we want to see?

- Community gardens
- Community engagement
- Incentives for community support
- Council support for communities e.g., funding, facilitating meetings
- Positive promotion of environmental well-being



ACTIONS (ENGAGING THE COMMUNITY)

BONUS POSTER

Participants also created an additional poster, illustrating their ideas on how to engage the community on the importance of Biodiversity.

Engaging the community

- Action - engaging the community
- Gardens and spaces
- Infrastructure - make use of natural areas through
- sport, community events etc.
- Urban reserves
- Government support
- Ideas become realised
- Teach people to value nature
- Youth programs
- Social media advertising
- Programs / initiatives
- Education
- School run events and spaces
- Awareness
- Funding



EXPLAINING 'OUR BIG IDEAS'

Participants recorded a 2-minute video, presenting and explaining the six big ideas they had generated. This allowed for a clear and concise overview of each priority. Video can be found [here](#).

video link to be provided



SUBMISSIONS

Seventeen submissions were received, and two of them were included in the MySay data as their format matched the conversation kit and MySay questions.

The City of Ballarat has received all submissions and will review them as part of developing the draft strategy.

SUBMISSION TITLE	ORGANISATION/NAME	OVERVIEW
Biodiversity Strategy	Individual contributors	Request for City of Ballarat to stop tree planting in, around Band Oval and to resume weed control and maintenance.
Intervention strategies for Ballarat Koalas	Ballarat Rehabilitation and Conservation (BWRAC) / Jessica Robertson	Intervention strategies to prevent Koalas being killed by road trauma.
BEN Papers relating to the Ballarat Biodiversity Strategy	Ballarat Environment Network	Industrial Zoning issue, with historical supporting evidence on land preservation.
Papers produced by Ballarat Environmental Network that relate to the proposed Ballarat Biodiversity Strategy	Ballarat Environment Network	Submission describes what was Carngham Road Wetland and questions the destruction of this wetland, with no provision of compensatory wetland or biodiversity funding.
Papers produced by BEN relating to Ballarat biodiversity strategy	Ballarat Environment Network	The submission highlights the City of Ballarat Sustainability Strategy from 2012 and comments from two BEN members on the draft. It notes that the Rossiter review of the Strategy, which may have been unpublished or removed, should be accessible to inform input for the 2023 strategy.
Papers produced by BEN relating to the Ballarat biodiversity strategy	Ballarat Environment Network	Mullahwallah Swamp water level concerns.
Papers re Ballarat Biodiversity Strategy (1)	Ballarat Environment Network	Request to incorporate the former Rifle Range into Woorookwurrung Park.

...continued overleaf

SUBMISSION TITLE	ORGANISATION/NAME	OVERVIEW
Papers re Ballarat Biodiversity Strategy	Ballarat Environment Network	Miner's Rest Wetland.
The file attached recounts the history of water supply changes and the works program proposed to restore optimal flows to the swamp.		
Re Help guide biodiversity in Ballarat!	Ballarat Environment Network	The Network documented efforts to have C/A 43, Nerrina, included in Monte Christo reserve.
Biodiversity feedback	Individual contributors	Ballarat Biodiversity Submission in Conversation Kit format (included in the MySay Data summary)
Biodiversity Strategy Submission - Indigenous Plant Nursery Volunteers	City of Ballarat Indigenous Plant Nursery Volunteers	Ballarat Biodiversity Submission in Conversation Kit format (included in the MySay Data summary)
Papers prepared by Ballarat Environment Network and Ballarat Field Naturalists re Ballarat Biodiversity Strategy	Field Naturalists' Club of Ballarat	Request for a balanced approach to urban water supply and environmental conservation in the Ballarat region.
Ballarat Biodiversity Strategy_ Field Naturalists 'Club Ballarat	Field Naturalists 'Club Ballarat	Ballarat Biodiversity Submission
Biodiversity Strategy Response	Friends of Canadian Corridor Incorporated	FoCC Biodiversity Strategy Response
Biodiversity Strategy Submission - Gardens for Wildlife Ballarat	Gardens for Wildlife Ballarat	Ballarat Biodiversity submission
Ballarat Biodiversity Strategy submission	The Bunanyung Landscape Alliance Inc/ Dr Stephen Carey	Bunanyung Landscape Alliance Inc submission to the Ballarat Biodiversity Strategy.
Wattle-Flat-Pootilla Landcare Biodiversity Strategy Submission	Wattle Flat-Pootilla Landcare / Anthony Murphy	Ballarat Biodiversity Submission


NEXT STEPS

Wadawurrung, Dja Dja Wurrung and Ballarat City Council will be meeting to talk about the importance of a healthy Country and what this looks like for our Traditional Custodians.

A final council staff meeting will be held to work with the ideas from the community and the young people's forum. The staff will work directly with the data from all the engagement and will focus on priorities set in the youth forum, developing actionable steps.

The draft Biodiversity Strategy will go to Council in December 2023 for endorsement prior to being released for consultation in early 2024.





PLEASE NOTE: This report has been prepared by MosaicLab on behalf of and for the exclusive use of Ballarat City Council. The sole purpose of this report is to provide Ballarat City Council with materials produced at the workshop on the 16 September 2023.

This report has been prepared in accordance with the scope of services set out by Ballarat City Council. In preparing this report, MosaicLab has relied upon the information provided by the participants at the workshop. Ballarat City Council can choose to share and distribute this report as they see fit. MosaicLab accepts no liability or responsibility whatsoever for or in respect of any use of or reliance upon this report by any third party.

MosaicLab is a Victorian-based consultancy that specialises in community and stakeholder engagement, facilitation, negotiation, strategic planning and coaching.



REPORT PREPARED BY:

mosaicLAB

www.mosaiclab.com.au