

VALE STREET RESERVE

21 Vale St, Alfredton VIC 3350



2 **DETAIL PLAN**
Scale: 1:600

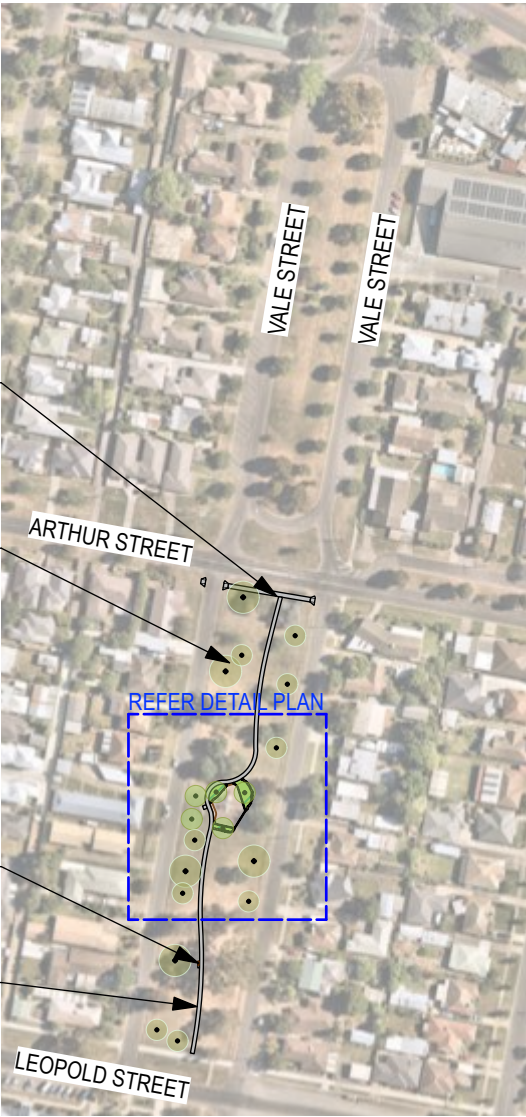
ADD GARDEN BEDS WITH BASALT ROCK & LOG EDGING TO EXISTING PLAYGROUND TO EXPAND ON EXISTING SECTION OF ROCK EDGE, WITH TREE PLANTING FOR NATURAL SHADE.

NEW PATH CONNECTION & KERB RAMPS FROM ARTHUR STREET TO PLAYGROUND FOR IMPROVED ACCESSIBILITY

ADDITIONAL TREE PLANTING FOR IMPROVED CANOPY COVER

PROPOSED SEAT WITH ARMREST AND BACK, WITH SPACE FOR A WHEELCHAIR

OPPORTUNITY FOR PATH CONNECTION FROM EXISTING CROSSOVER TO PLAYGROUND FOR IMPROVED ACCESSIBILITY



1 **SITE PLAN**
Scale: 1:3000