

INKERMAN GULLY RESERVE

105 Simpson St, Ballarat North VIC 3350



- MAINTENANCE VEHICLE ACCESS WITH REMOVABLE BOLLARD
- SWALE PLANTING AND BRIDGE CROSSING OVER DRAINAGE LINE
- MULCHED TREE AND UNDERSTOREY NATIVE PLANTING ALONG EMBANKMENTS

EXTEND CONCRETE PATH THROUGH RESERVE - SUBJECT TO FURTHER COST AND ACCESSIBILITY FEASIBILITY.

PROVIDE CONCRETE PATH TO SHELTER & PLAYGROUND FOR IMPROVED ACCESSIBILITY. EXISTING MAINTENANCE ACCESS TO BE RETAINED.

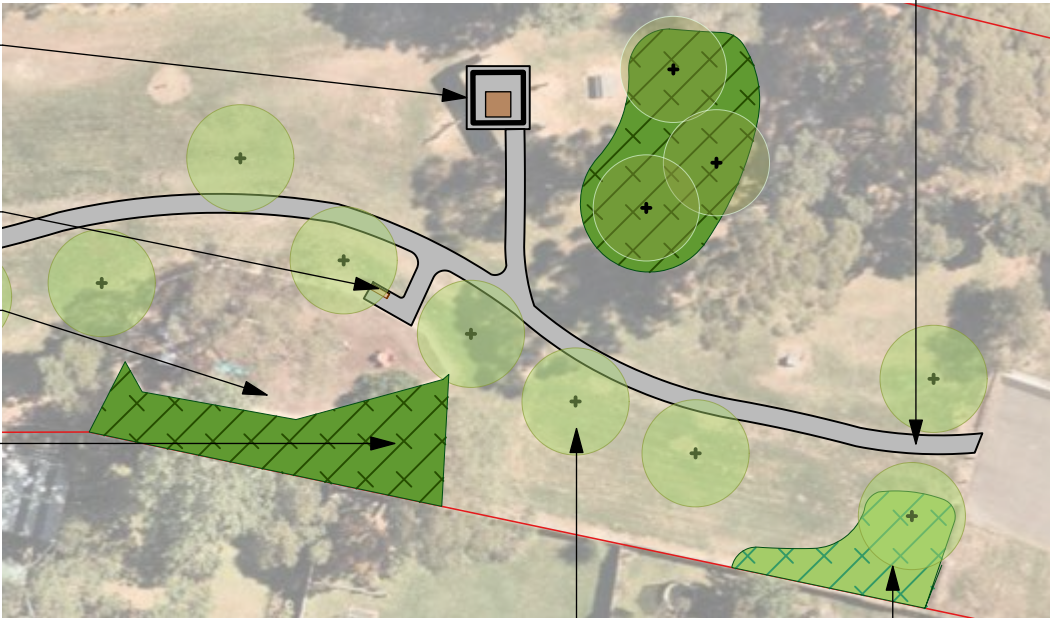
1 SITE PLAN
Scale: 1:3000

NEW SHELTER TO REPLACE EXISTING ALONG WITH ADDITIONAL PICNIC SETTING

NEW BENCH SEATING WITH SHADE TREE PLANTING

EXISTING TREES AROUND PLAYGROUND TO BE ASSESSED BY ARBORIST, WITH ANY REMEDIAL WORKS TO BE UNDERTAKEN TO ENSURE SAFETY

MULCHED GROUND WITH LOGS & BOULDERS NEXT TO EXISTING PLAYSPACE TO CREATE INFORMAL NATURE PLAY AREA.



2 DETAIL PLAN
Scale: 1:600

ENTRY FEATURE TREE PLANTING

NEW ENTRY GARDEN BED PLANTING WITH NATIVE SPECIES