

# SHAW AVENUE RESERVE

2A Shaw Ave, Wendouree VIC 3355



- CONCRETE PAVING TO RESERVE PERIMETER
- PROVIDE AFL / SOCCER COMBINATION GOALS IN OPEN SPACE
- PROVIDE NEW TREE PLANTING TO INCREASE CANOPY COVER AND ASSIST IN SHAPING SPACE INTO ROOMS
- REPLACE EXISTING POST AND RAIL FENCE WITH NEW

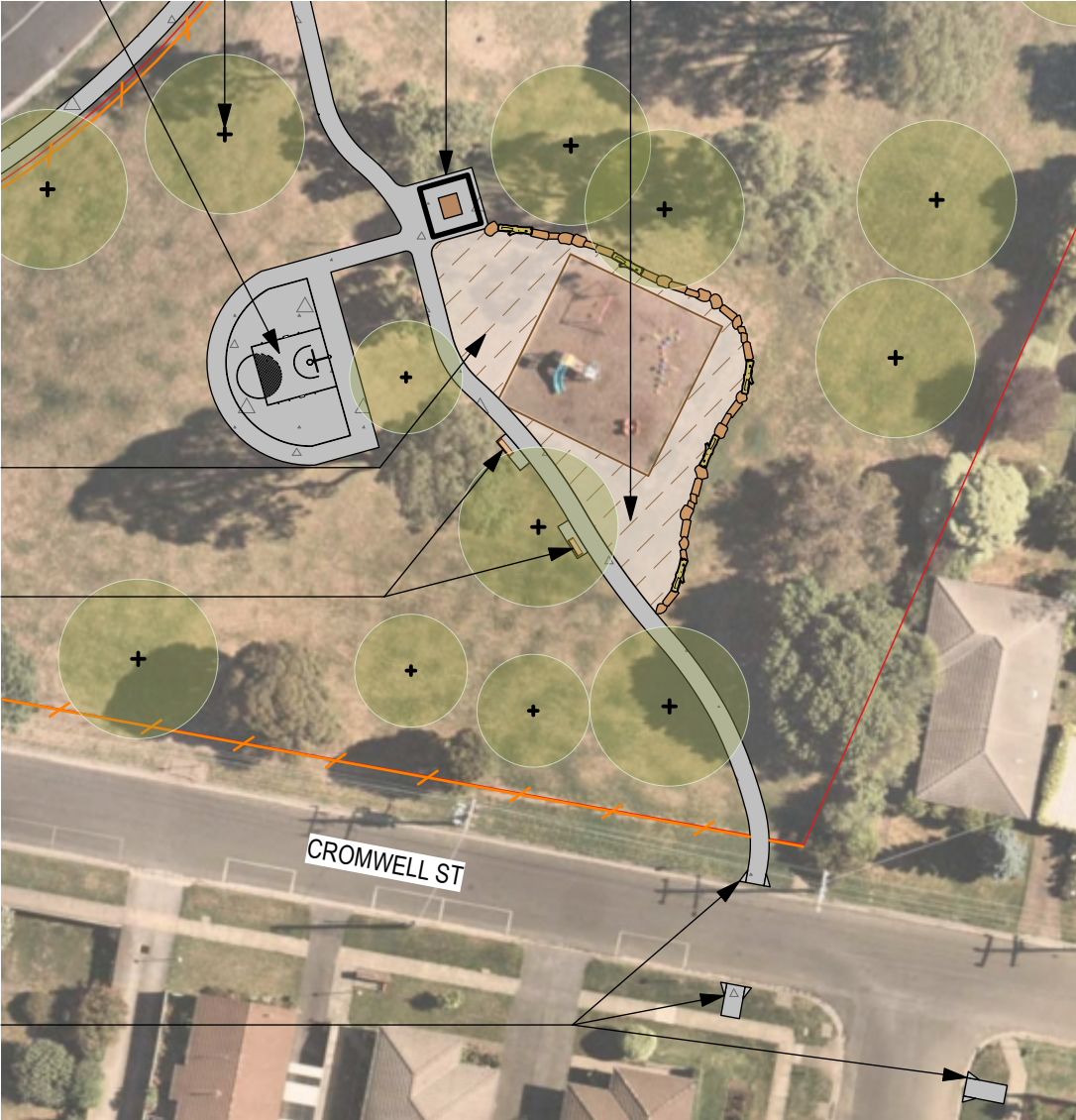
1 SITE PLAN  
Scale: 1:3000

PROVIDE BASKETBALL RING AND LINEMARKING

PROVIDE ADDITIONAL SOFTFALL SPACE AND NATURE PLAY ELEMENTS

PROVIDE SEATS WITH ARMRESTS & BACK, WITH SPACE FOR A WHEELCHAIR

PROVIDE PATH ACCESS TO PLAYGROUND, WITH OPPORTUNITY FOR NEW PRAM CROSSINGS TO IMPROVE ACCESSIBILITY FROM NEARBY SCHOOL



PROVIDE NEW TREE PLANTING TO INCREASE CANOPY COVER AND ASSIST IN SHAPING SPACE INTO ROOMS

INSTALL SMALL SHELTER AND PICNIC SETTING

EXPAND PLAYSACE TO SOUTHERN SIDE WITH ADDITIONAL EQUIPMENT TO COMPLEMENT EXISTING.

2 DETAIL PLAN  
Scale: 1:600