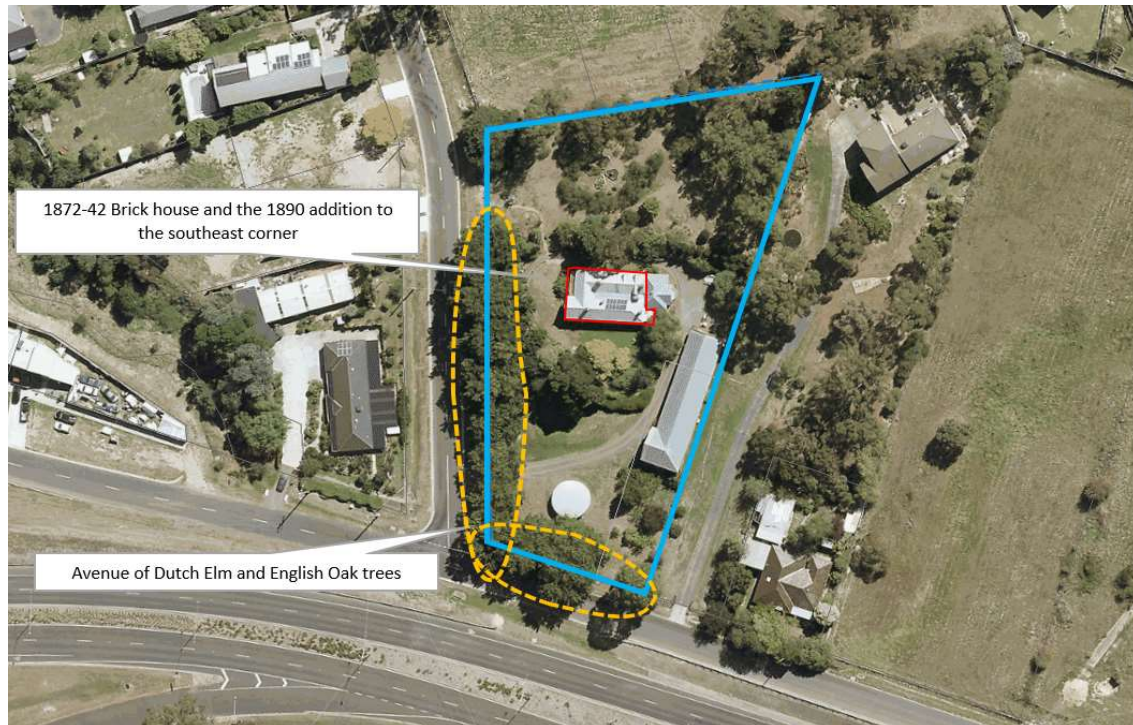


## St Mark's Anglican Parsonage

### Statement of Significance, November 2022

<b>Heritage Place:</b>	201 Melbourne Road, Brown Hill	<b>PS ref no:</b>	HO230
------------------------	--------------------------------	-------------------	-------



- Heritage Overlay Boundary
- - - Significant vegetation
- Significant buildings

#### What is significant?

The former St Mark's Parsonage, 201 Melbourne Road, Brown Hill, is significant. It was designed by Henry R Caselli, who was both Ballarat Diocesan architect and designer of many of Ballarat's finest secular buildings and built by J Thornton. It was originally intended to serve as the residence of the minister for both St Mark's Church of England at Brown Hill and St John's Church of England at Little Bendigo (now Nerrina).

The land was purchased by church trustees in 1870, and tenders to construct the parsonage called in 1871, but it was not completed until 1874.

The parsonage was occupied by Reverend (later Archdeacon) Christopher Allanby until 1914, and continued to serve as a parsonage until 1940, at which time it became a private residence.

The following elements of the place are of heritage value:

- The 1872-74 original extent of the brick house, and the c1890s addition to the south-east corner.
- The elevated setting, with views to the west to Ballarat Central, ringed by an avenue of mature Dutch Elm (*Ulmus x hollandica*) and English Oak trees (*Quercus robur*) planted prior to 1934.

The 2003 rear (east) extension, outbuildings and recent plantings are not of heritage significance.

### **How is it significant?**

---

The former St Mark's Parsonage is of historical, technical, and aesthetic significance to the City of Ballarat.

### **Why is it significant?**

---

Historically, the former parsonage illustrates the early development of Brown Hill and the efforts of the local Anglican community to establish their infrastructure including housing for their minister. The modest size and form of the house, with its simple Gothic Revival details including a pierced bargeboard and trefoil design to the bay window parapet, is indicative of the limited financial means of the sparsely populated and poor district in which it took three years to raise enough money to gradually complete the building. (Criterion A)

Technically, the former parsonage is an early example of cavity wall construction in the Ballarat area. This early adoption by prominent and prolific Ballarat architect Henry R Caselli indicates that he was open to useful new technologies as they appeared. (Criterion F)

Aesthetically, the former parsonage in its generous hillside setting ringed by early tree avenue plantings creates an attractive composition that illustrates the rural origins of Brown Hill. (Criterion E)

### **Primary Source**

---

*St Marks Anglican Parsonage Heritage Citation* (Landmark Heritage Pty Ltd., 2022)