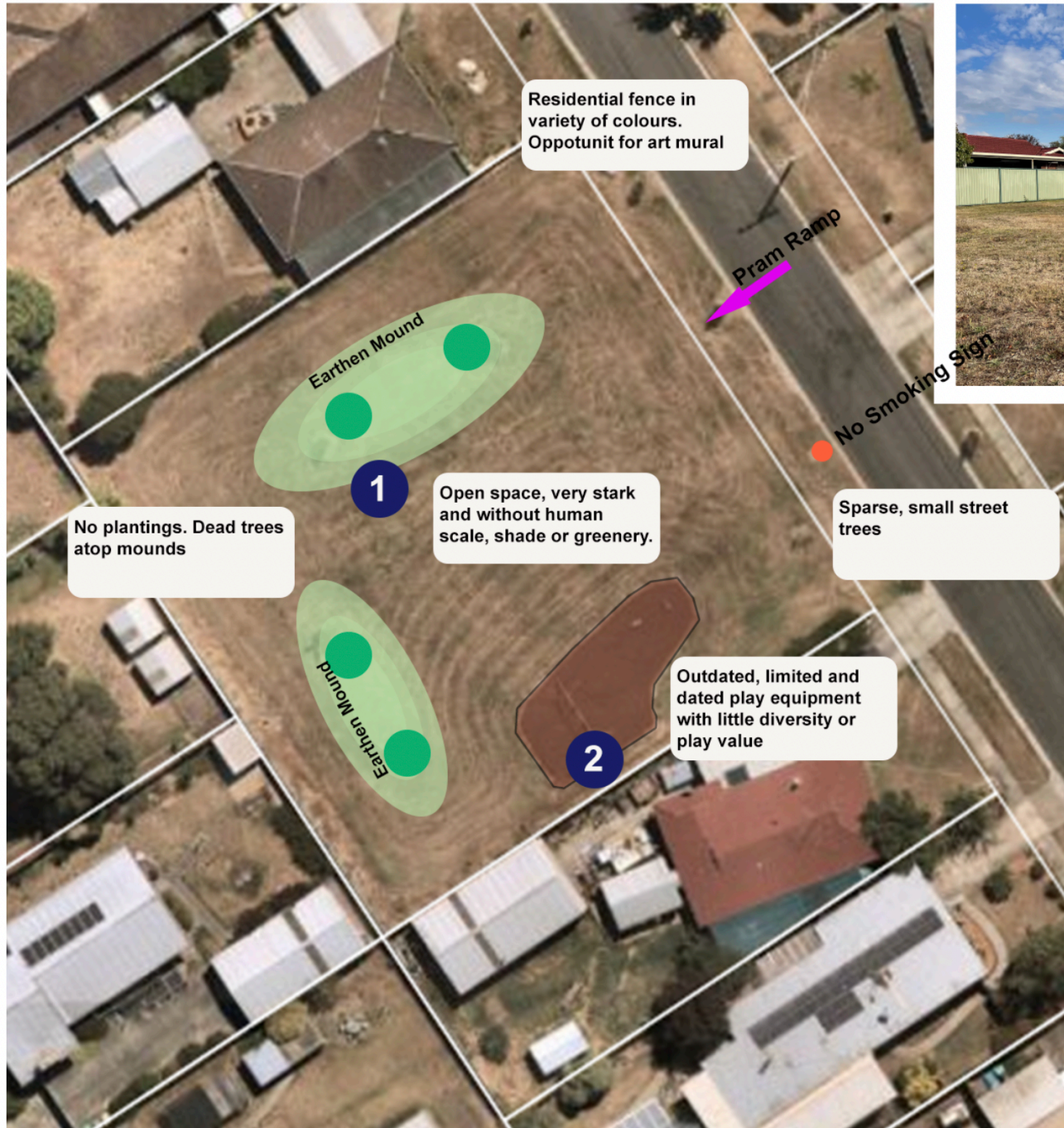


# Clover Street Reserve, Wendouree



## Site Analysis

- 9-13 Clover Street, Wendouree
- 1,797 M2 in size
- Land Owner - City of Ballarat

## Constraints

- Small, enclosed site

## Opportunities

- Add tree and human scale planting within reserve
- Incorporate mounds into play offering with nature play, planting or other appropriate elements
- Upgrade play equipment and add nature play
- Improve street appeal and entry
- Add seating and natural shade
- Improve accessibility to play space