

Ballarat Community Infrastructure Design Guidelines

The City of Ballarat is currently preparing Community Infrastructure Design Guidelines to guide how we plan and design community facilities across the municipality. How our buildings are designed plays a big role in making sure everyone feels safe, welcome and included.

To help us shape the way we plan and design our new community facilities, it is important for us to hear your thoughts and experiences on facilities you visit or what you would like to see in the design of new facilities.

The design guidelines will consider the following community facilities:



Libraries



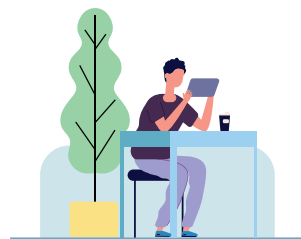
Kindergartens



Community hubs



Community halls



Meeting rooms



Maternal and child health centres



Have your say

Your feedback will provide valuable information around what makes our community facilities great places to visit.

Please scan the QR code to fill out a short survey or share your story which will help inform the development of the Community Infrastructure Design Guidelines.

For more information, please visit:

mysay.ballarat.vic.gov.au/community-infrastructure-guidelines-engagement



Community Infrastructure Planning Policy

In partnership with the development of the Community Infrastructure Design Guidelines, the Community Infrastructure Planning Policy is being reviewed to ensure the guiding principles are still current and provide the best direction for decision-making for community infrastructure planning.

The following six guiding principles in the Policy have played an important role when planning and designing community facilities.

01

Strategic and integrated planning

02

People first approach

03

Access, inclusion, and equity

04

Sustainability

05

Innovation and adaptability

06

Multi-purpose, flexible and safe

Do you feel the current guiding principles are still important to community infrastructure for City of Ballarat?

The Community Infrastructure Planning Policy, including the principles, and community feedback will inform the development of the Community Infrastructure Design Guidelines. Please scan the QR code and fill out the short survey that will help inform the review of the Community Infrastructure Planning Policy and the development of the Community Infrastructure Design Guidelines.

To complete a short survey or for more information, please visit:

mysay.ballarat.vic.gov.au/community-infrastructure-guidelines-engagement

