

BAKERY HILL RENEWAL PRECINCT CONCEPT PACKAGE

DESIGN STATEMENT

Bridge Street Precinct will be reinstated as a meeting place.

It will draw on Ballarat's history as a place for discovery, a place where old meets new and stories are uncovered. A place to continually explore, to come back to.

PROJECT OBJECTIVES

THRIVING

=

**DESIGN FOR
FLEXIBILITY**

CONNECTED

=

**OPEN THE
PRECINCT**

DISTINCTIVE

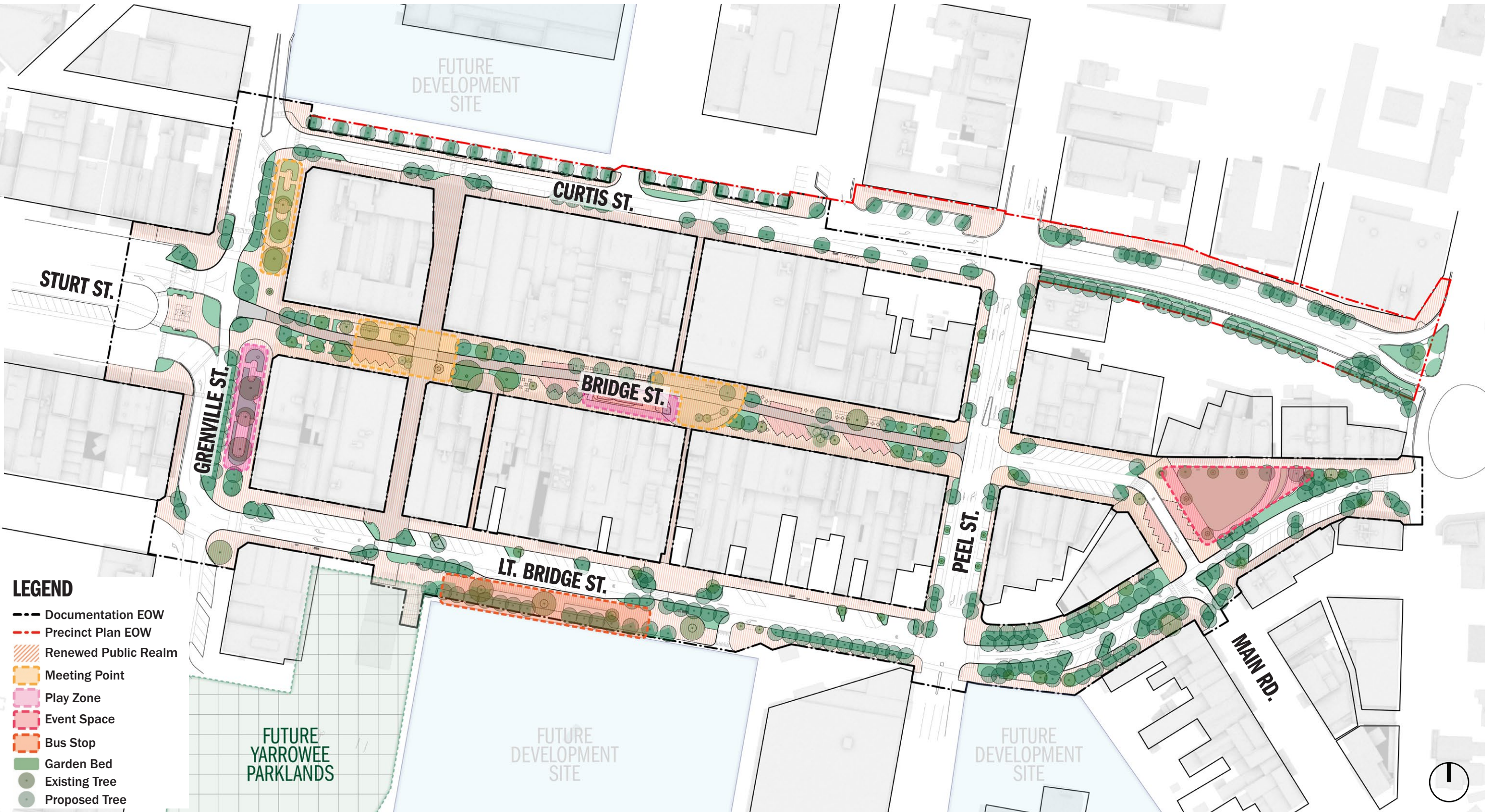
=

**REFLECT
LOCAL
PEOPLE
& PLACE**

PRECINCT PLAN

PRECINCT PLAN

OCTOBER 2021



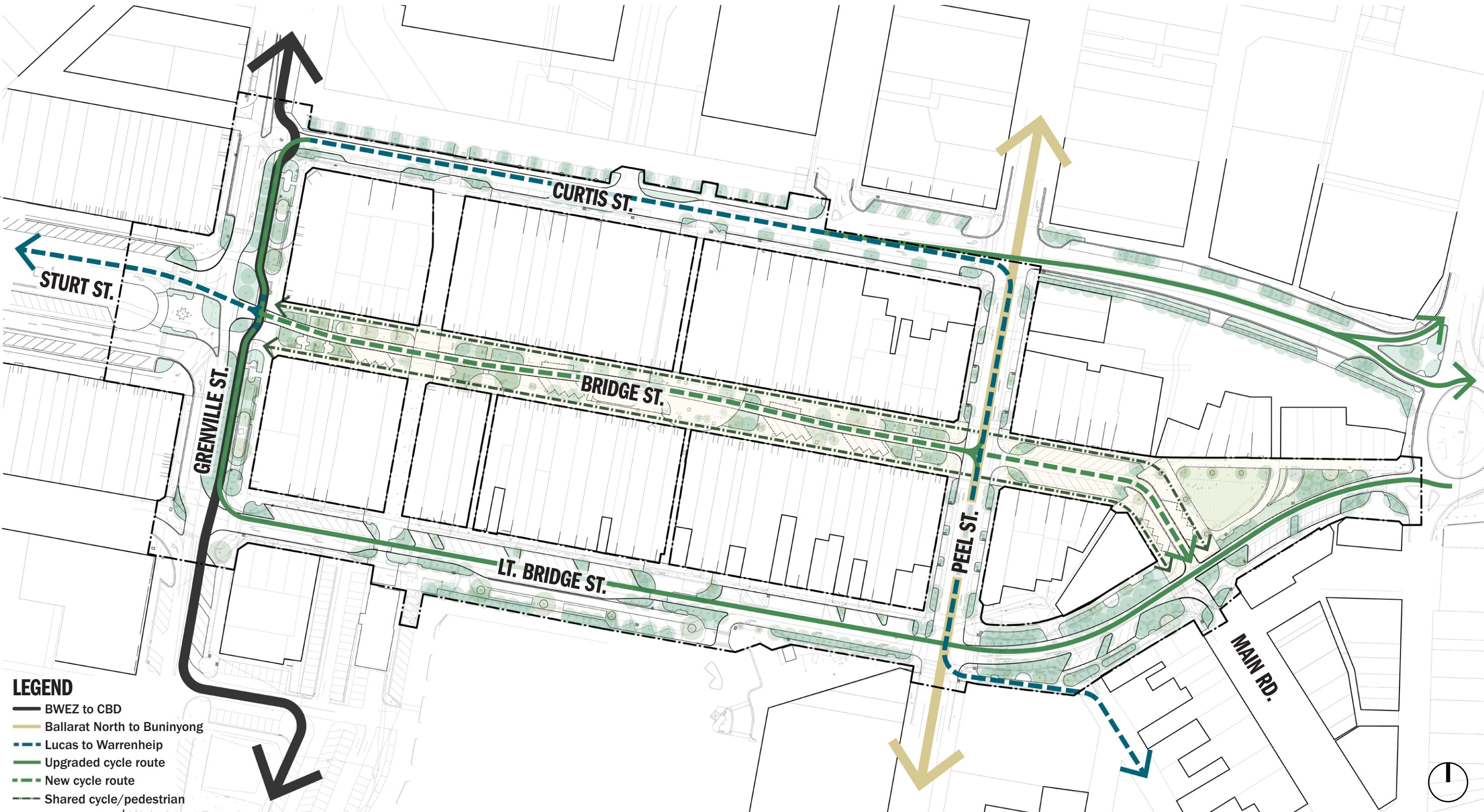
ILLUSTRATIVE CONCEPT PLAN

OCTOBER 2021

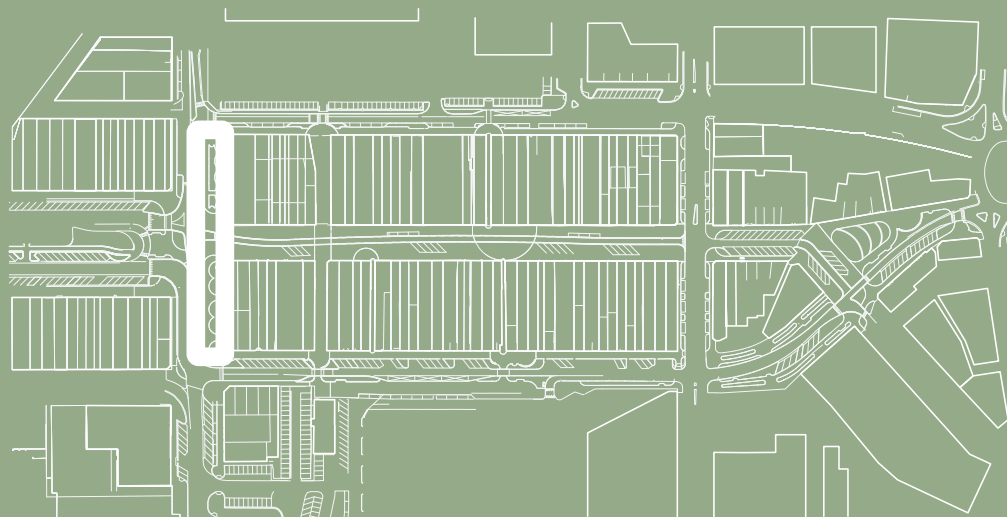


PRECINCT CYCLE NETWORK

CONNECTING INTO THE BALLARAT CYCLING ACTION PLAN



GRENVILLE STREET



GRENVILLE STREET

LINEAR PARK & GARDEN STREET



**a green street
with legible structure**



quieter moments



immersed in planting



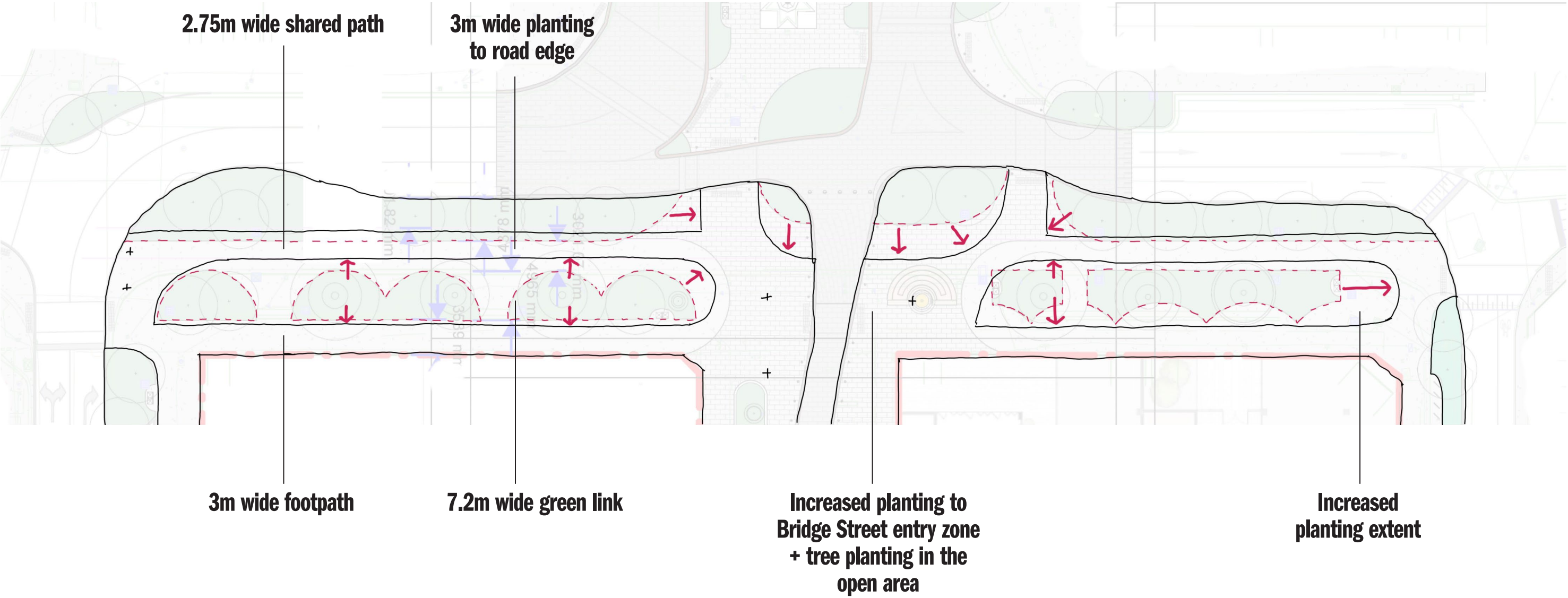
moments for play



**gathering spaces
+ future dining activation**

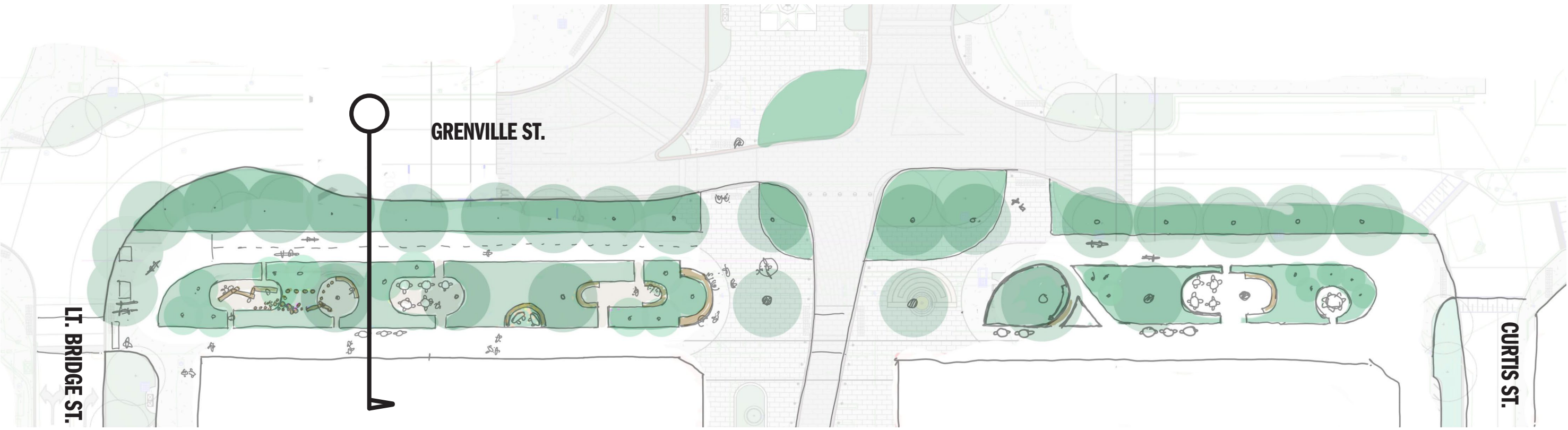
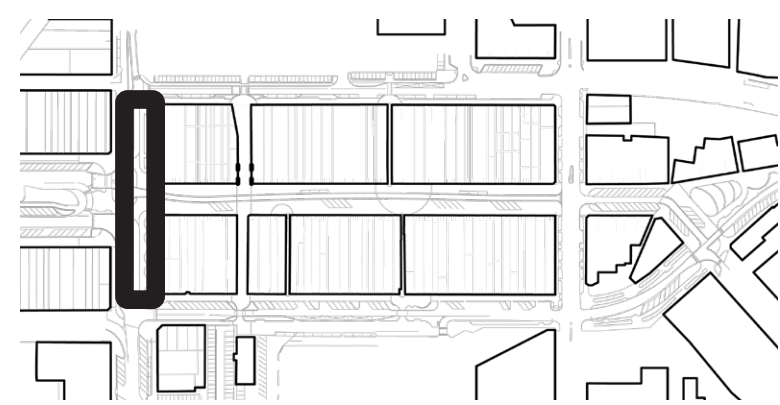
GRENVILLE STREET

REVISED STRUCTURE



GRENVILLE STREET

SKETCH DEVELOPMENT



GRENVILLE STREET

CONCEPT DEVELOPMENT



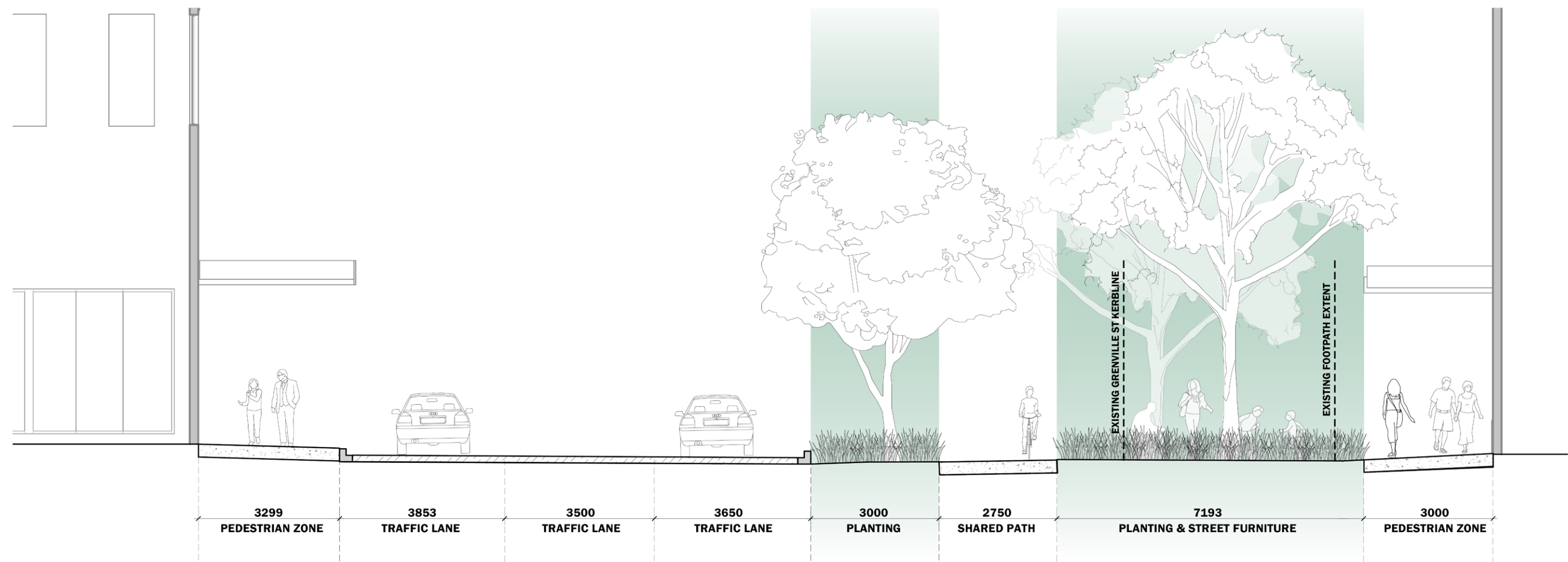
- 1 Extension of Sturt St gardens & public realm. Retention of existing monument.
- 2 Consolidated pedestrian crossings for increased connectivity Central pedestrian
- 3 Grenville St shared path (SUP) that connects into BWEZ to CBD cycle route.
- 4 Quiet moments and gathering spaces for future dining and western tenancy activation
- 5 A green street with hidden moments for play immersed in planting
- 6 Green entry threshold and vegetated welcome into Bridge Street with tree planting and immersive planting to meet, sit and rest

GRENVILLE STREET

REVISED CROSS SECTION

KEY CONSIDERATIONS:

- Reduced pedestrian zone along western building edge to maximise opportunity for planting
- Shared path reduced to 2.75m as per Ausroads standards (Recommended recreational and regional commuter paths)
- Approximately 7m central garden street and linear park, with room for activity, gathering and respite
- Reduced western planting zone to provide separation from roadway

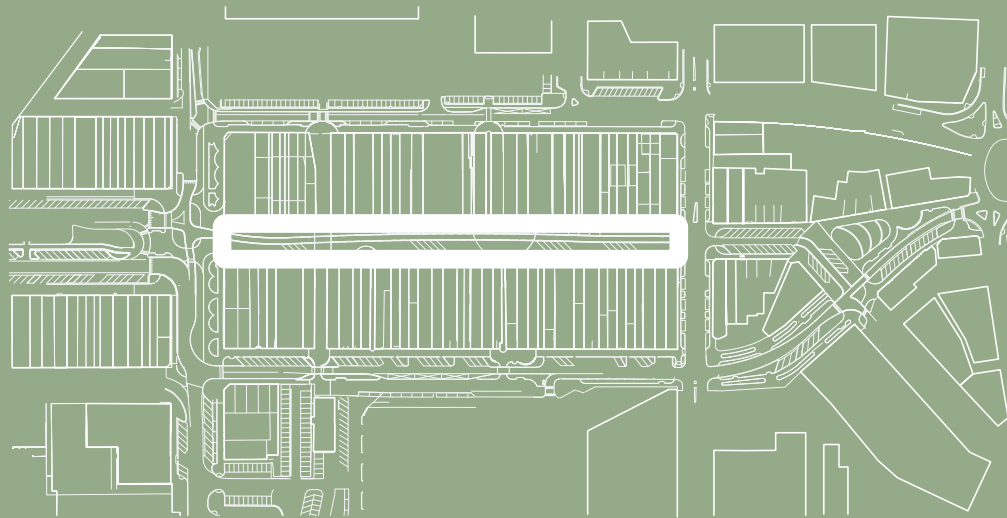


GRENVILLE STREET

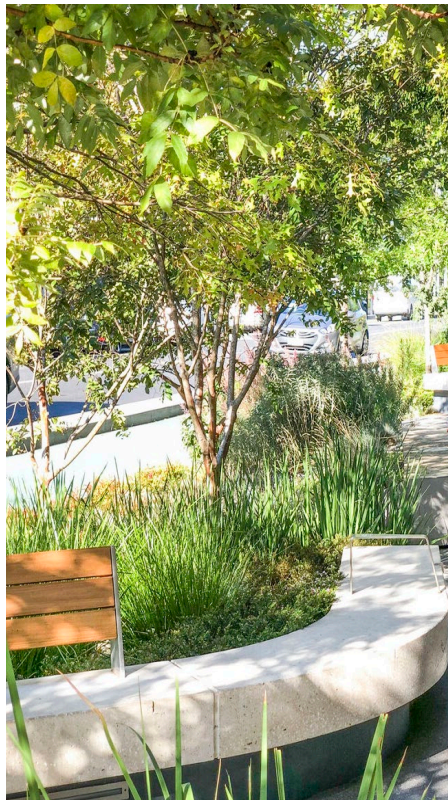
VIEW WEST TOWARDS BRIDGE & STURT STREET



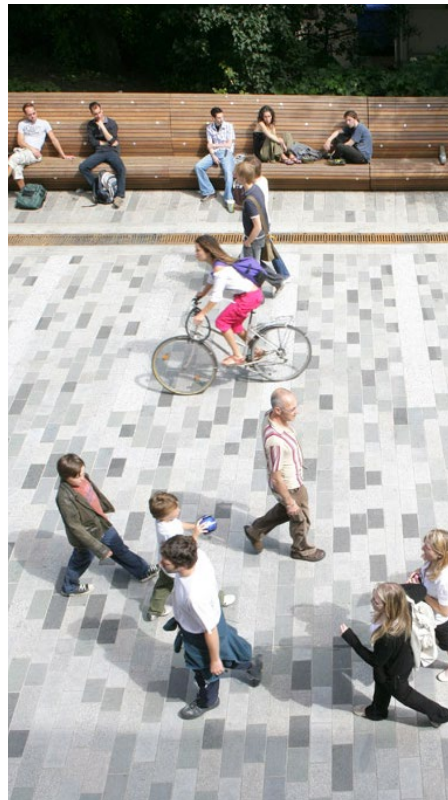
BRIDGE STREET



BRIDGE STREET



green entry thresholds



a shared zone



**providing a variety of
functions**



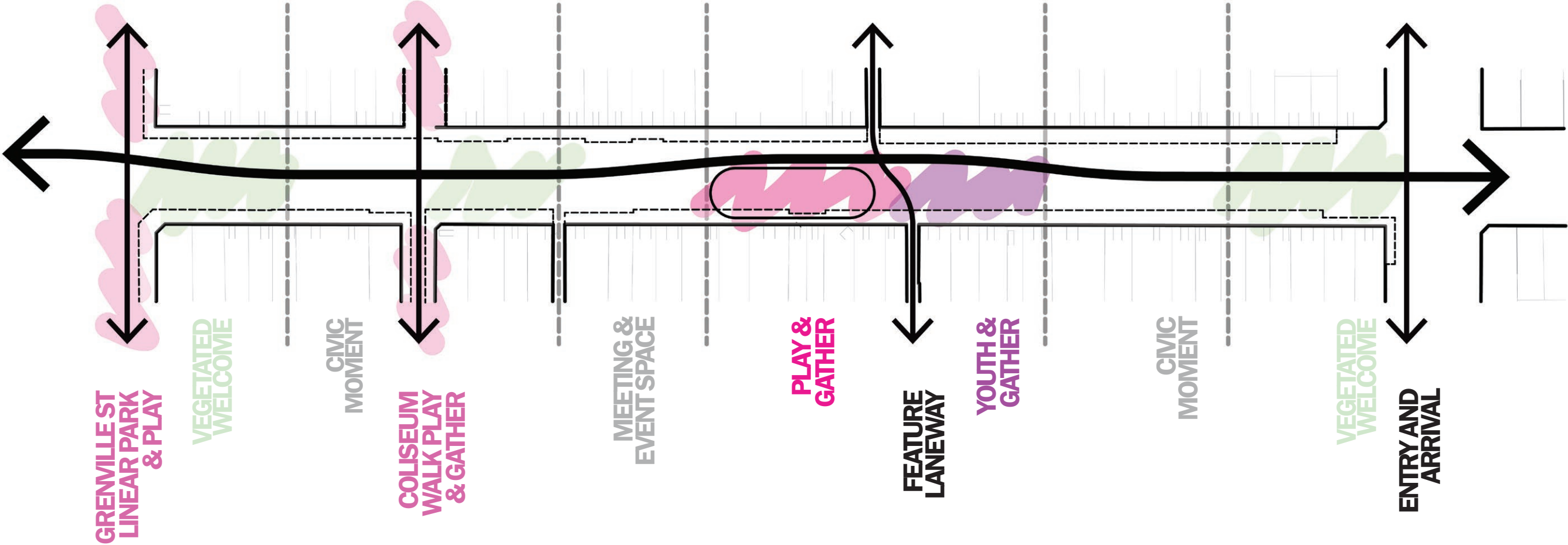
**market, performance and
event spaces**



moments for play

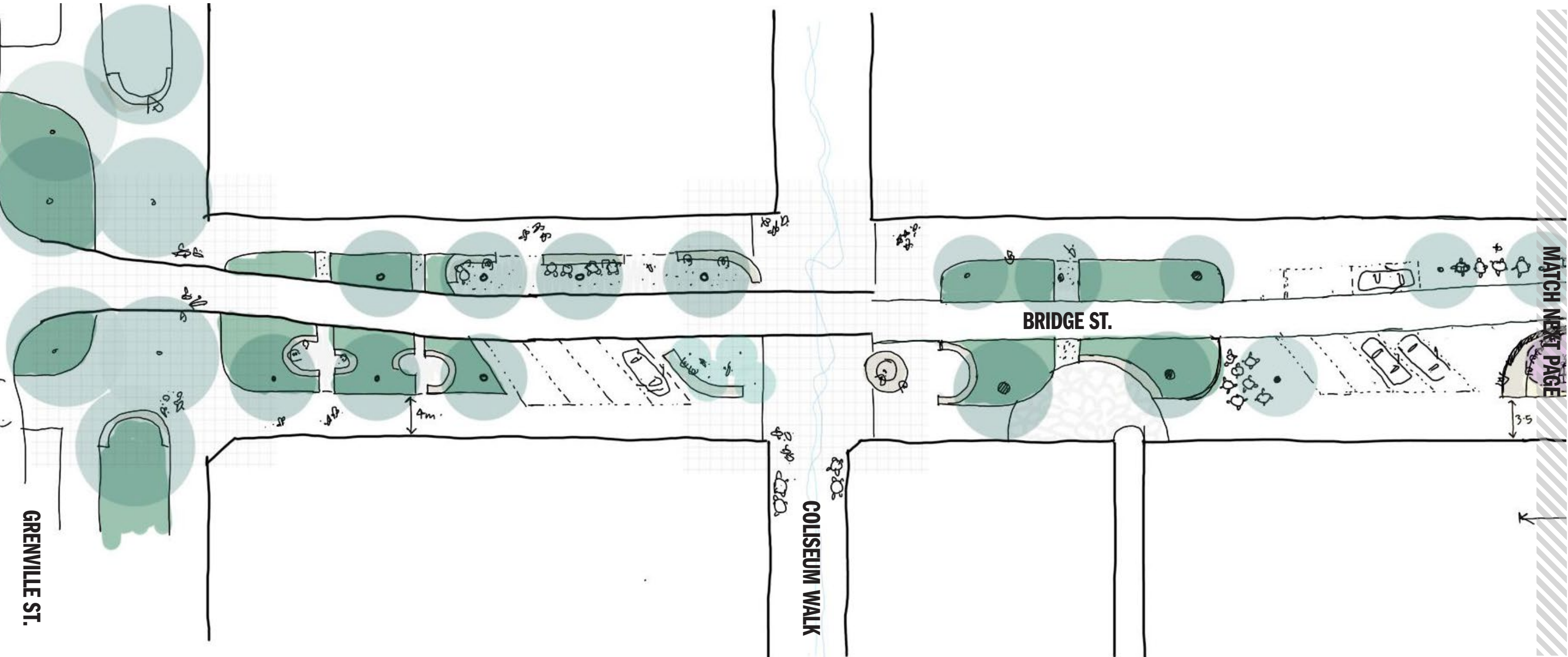
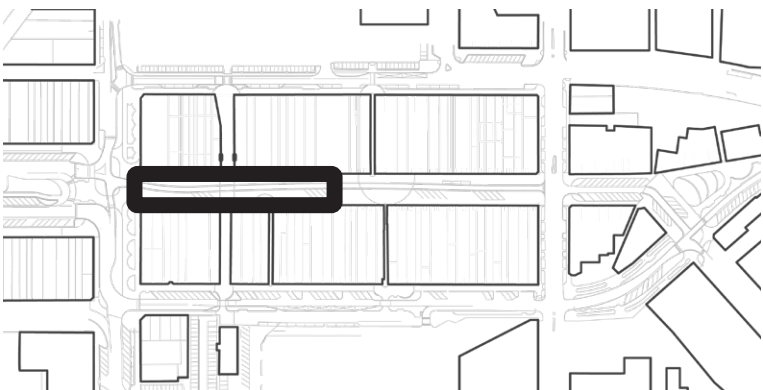
BRIDGE STREET

REVISED PRECINCT STRUCTURE



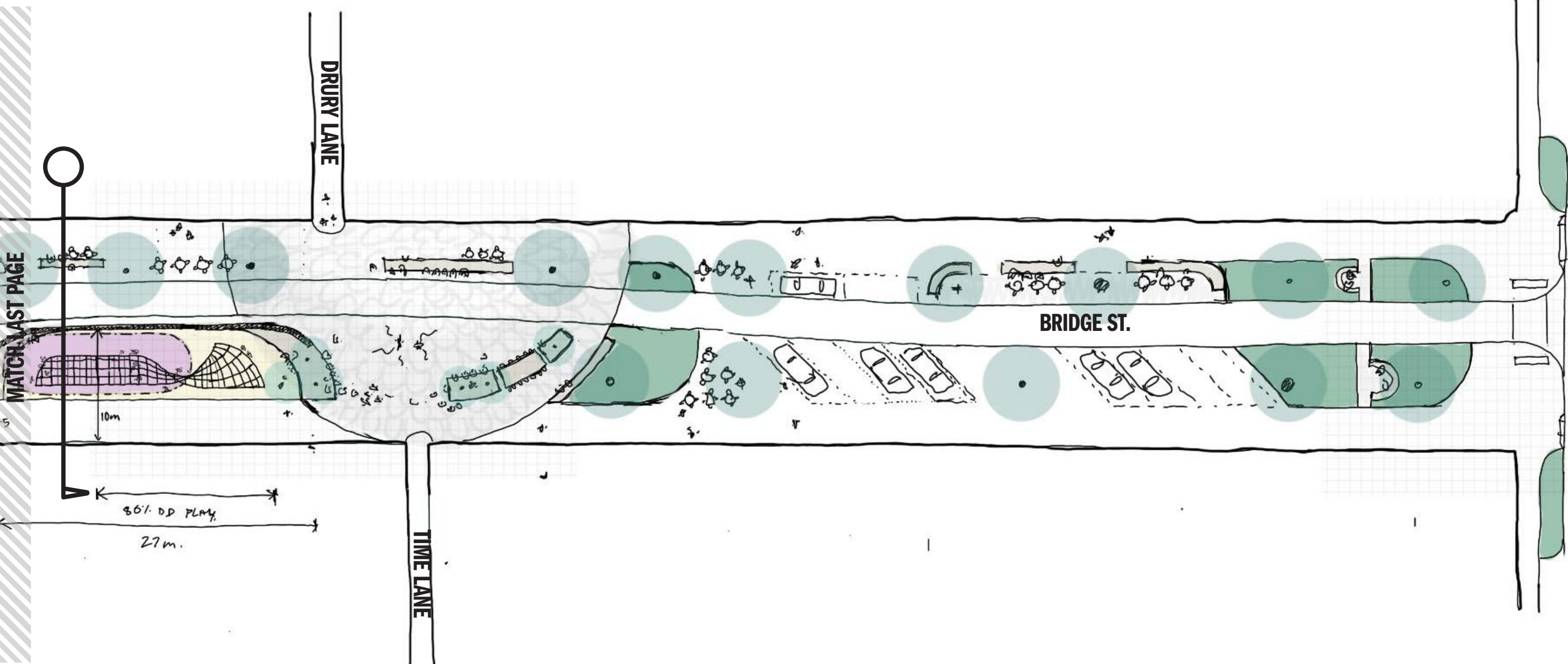
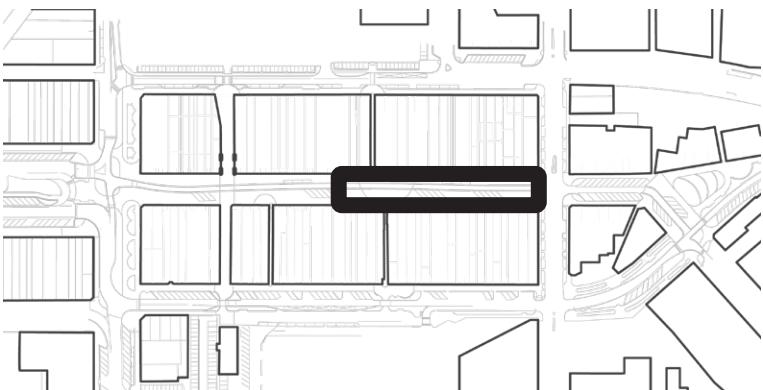
BRIDGE STREET

REVISED SKETCH DEVELOPMENT



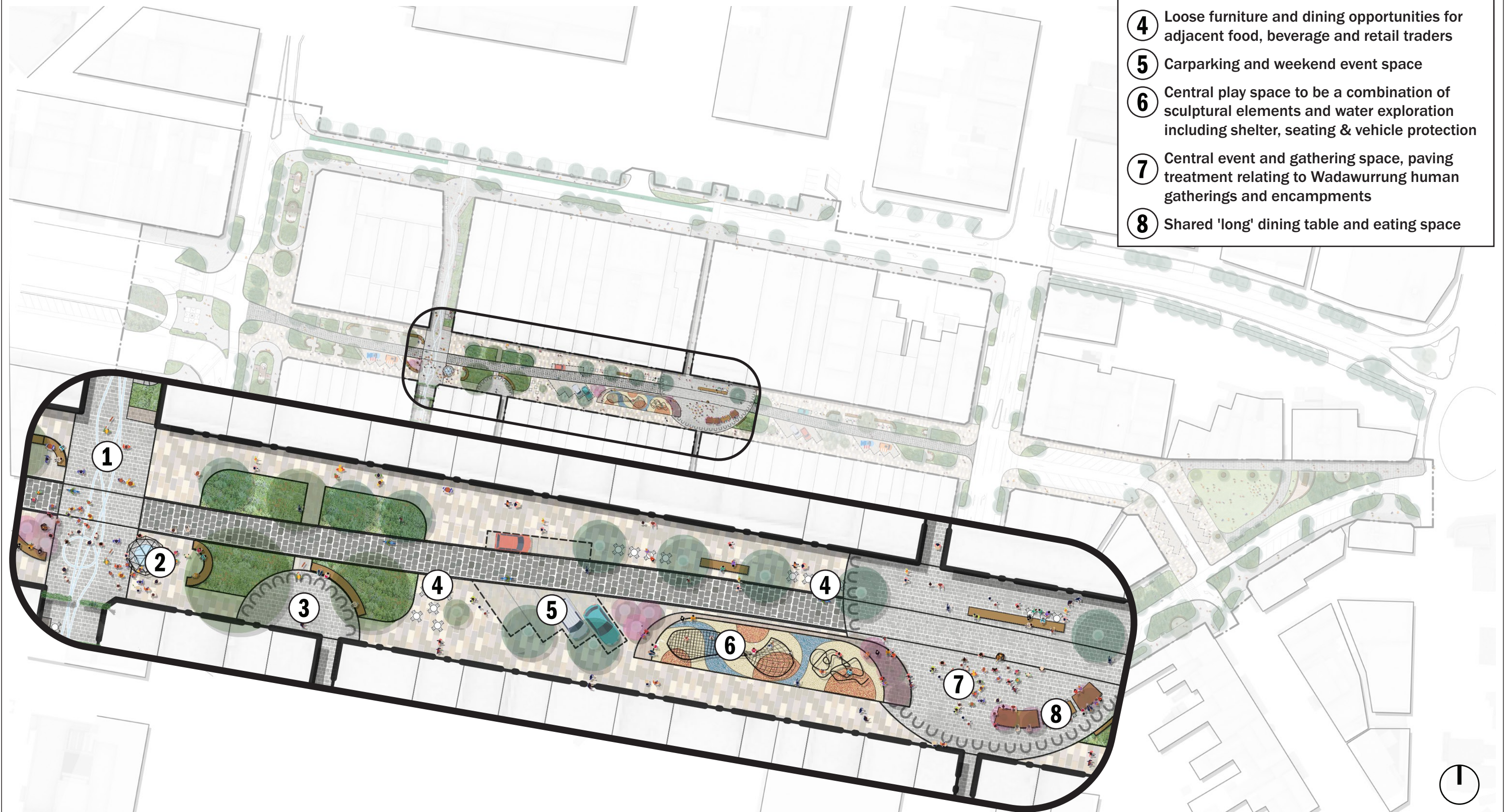
BRIDGE STREET

REVISED SKETCH DEVELOPMENT



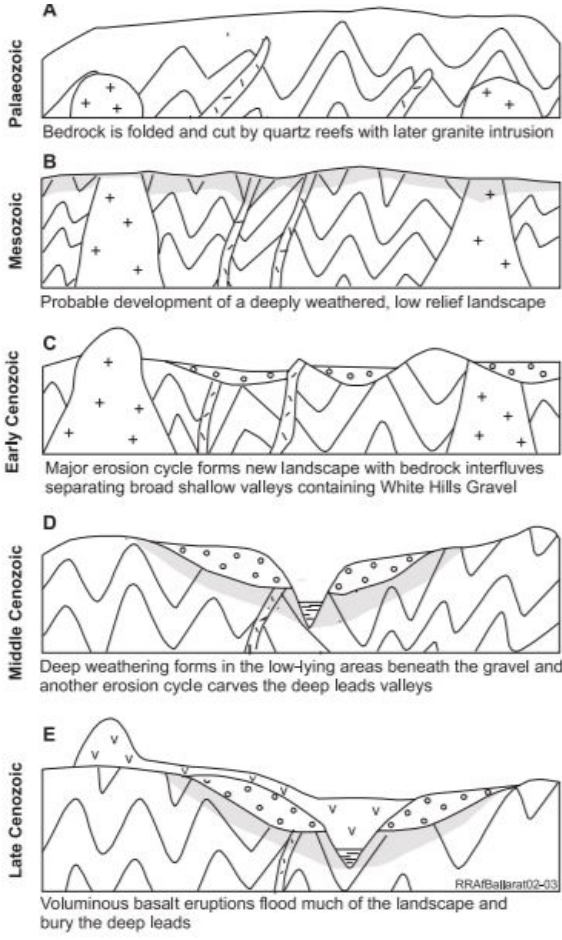
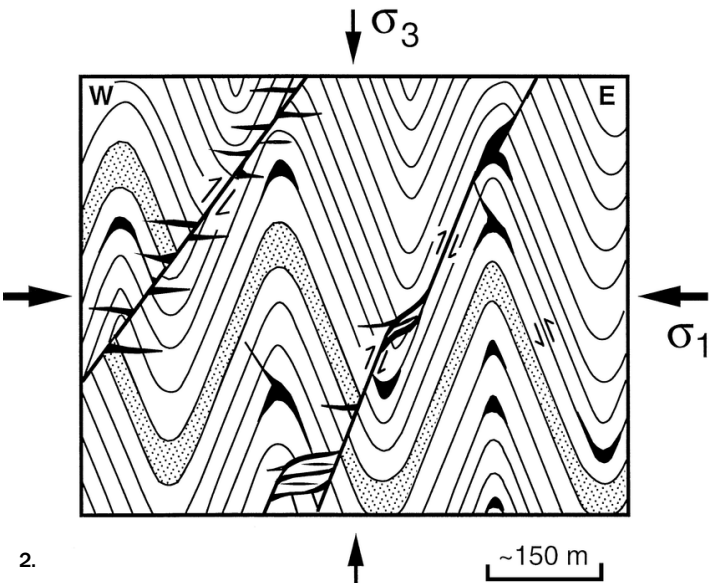
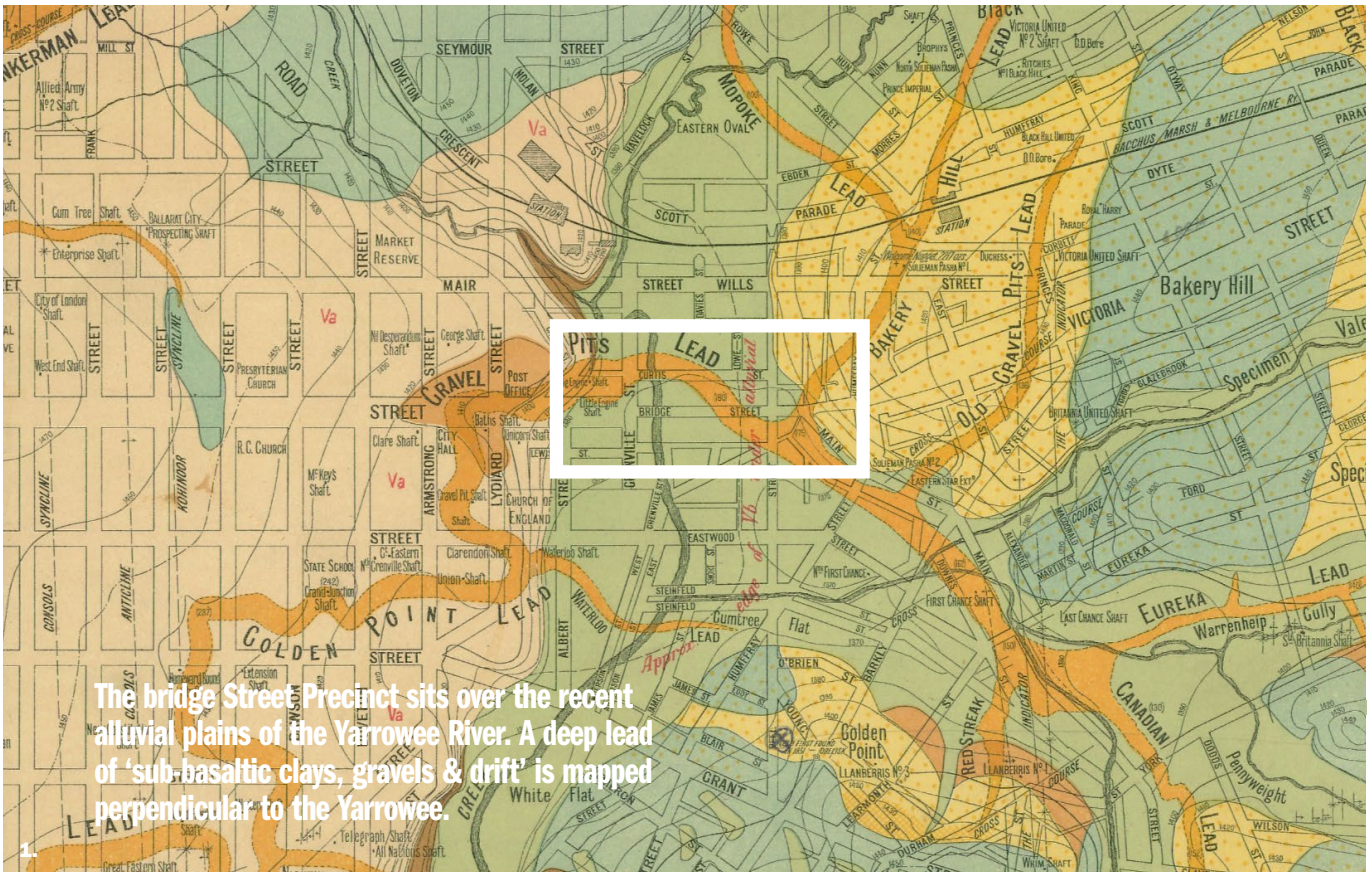
BRIDGE STREET

CONCEPT DEVELOPMENT



GEOLOGY & INDUSTRY

REFERENCING BALLAARAT'S LAYERS



Images:
1. Geological Map of Ballarat Gold Fields. Originally surveyed by W. Baragwanath for Geological Survey of Victoria 1917.
2. Structural controls on gold-quartz mineralisation within the Bendigo-Ballarat Zone of the Victorian goldfield. jogs after Cox et al., 1991b; Glen, 1995; Willman, 1995
3. Ballarat landscape evolution through time, D.H. Taylor for Geological Survey of Victoria

Intent: Tell a nuanced story that references the Ballaarat's unique geology of sandstone and granite, it's quartz reefs and gold deposits.

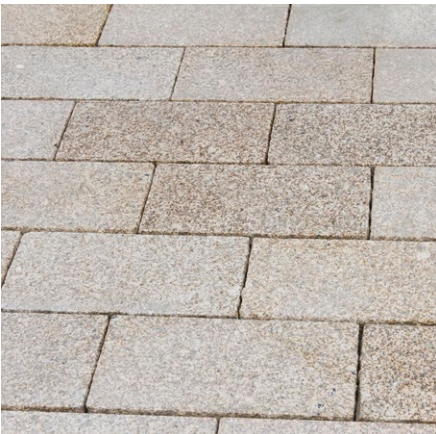
BRIDGE STREET

MATERIAL EXPRESSION

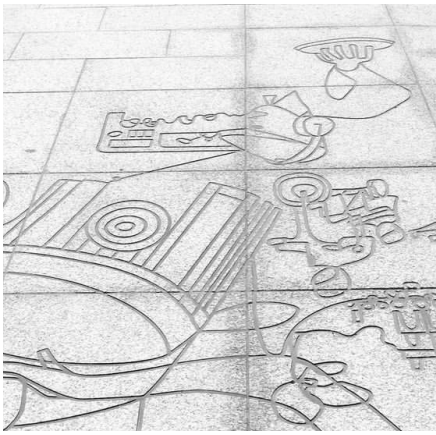
BLUESTONE LANES
Respect the historical laneways.
Variation in scale, pattern &
finish according to location.



WARM STREETS
Refence the alluvial field of
sandstone & granite gravel
below.



DETAIL MOMENTS
High quality materials, like a
quartz reefs of the Victorian
gold fields.



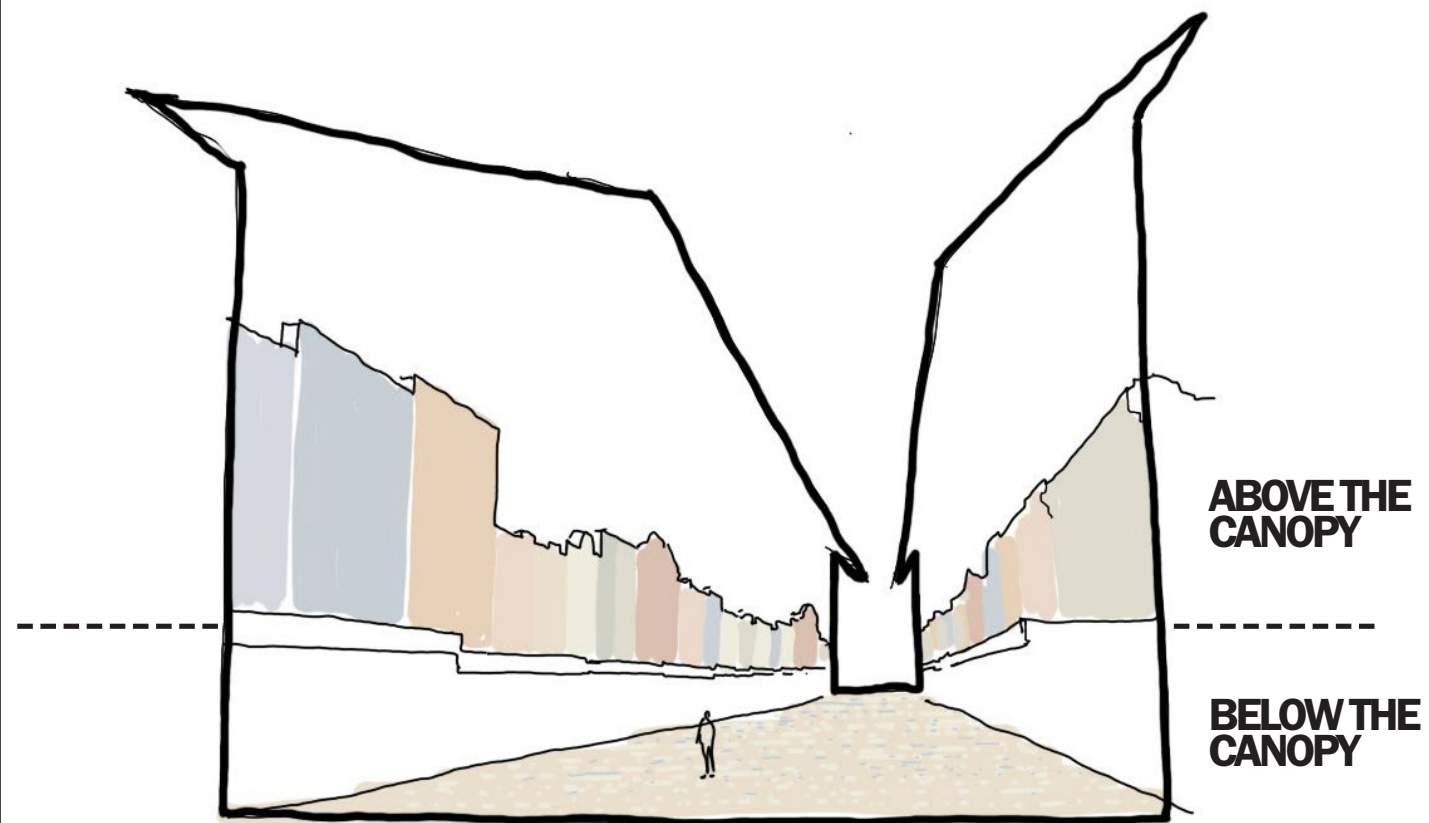
Intent: Develop a cohesive and legible material palette spanning scale, application & function.

NUGGETS
Specs of gold through the
wayfinding or art strategy
complete the geological story.



BRIDGE STREET

STREET CANYON MATERIAL EXPRESSION



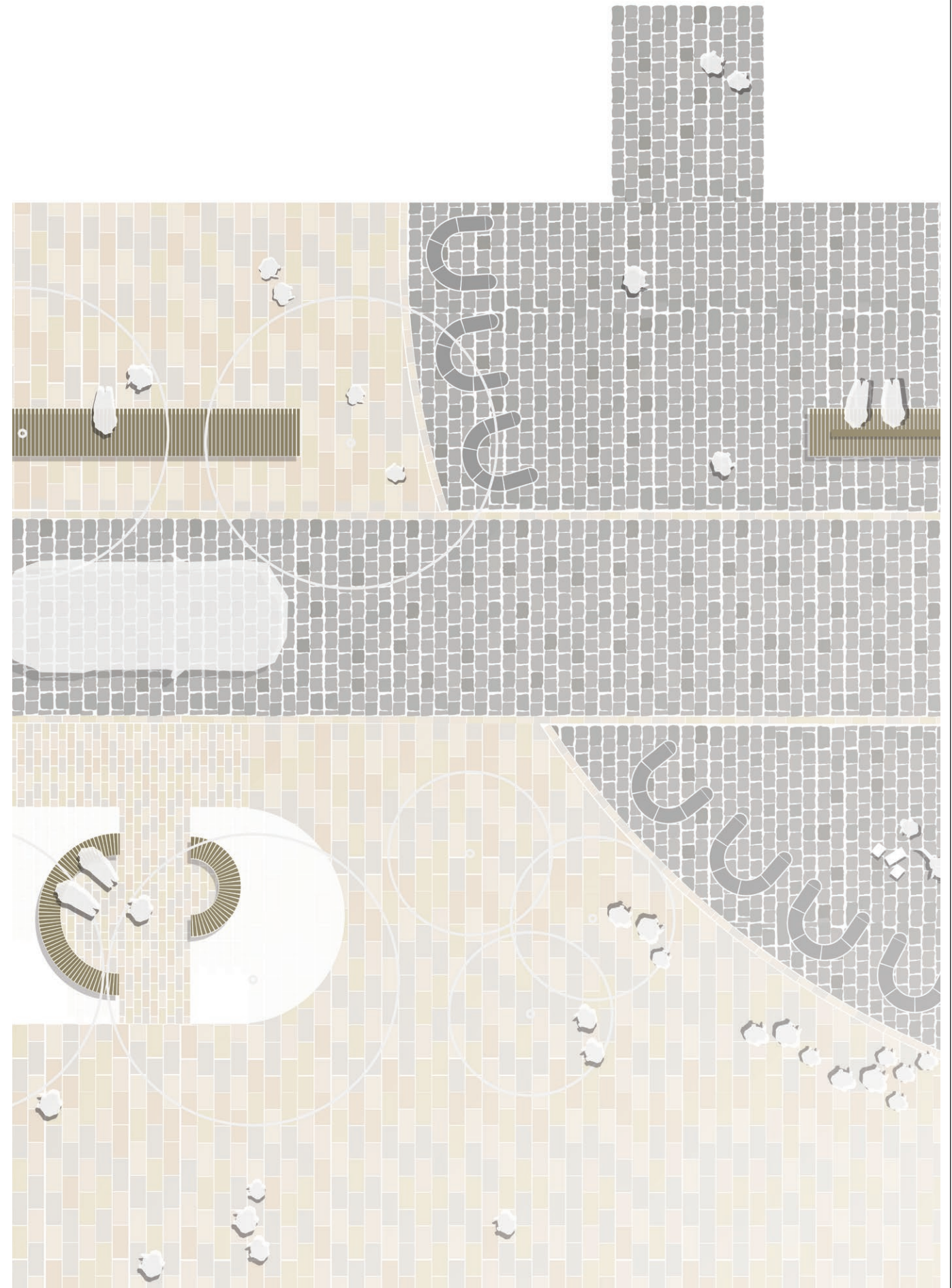
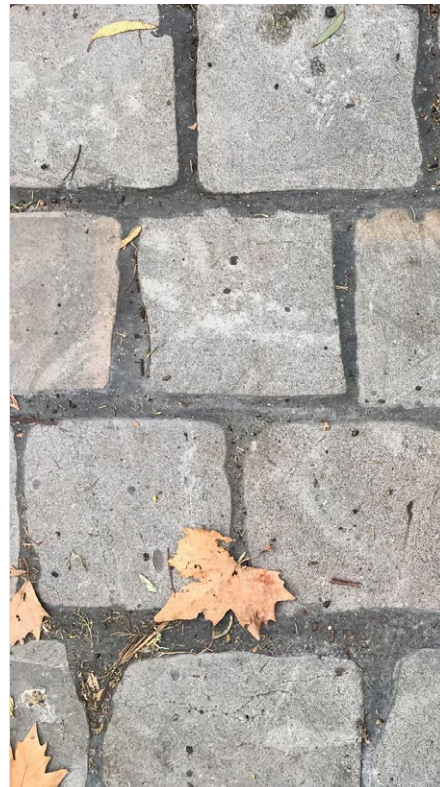
BRIDGE STREET

PAVEMENT STRATEGY



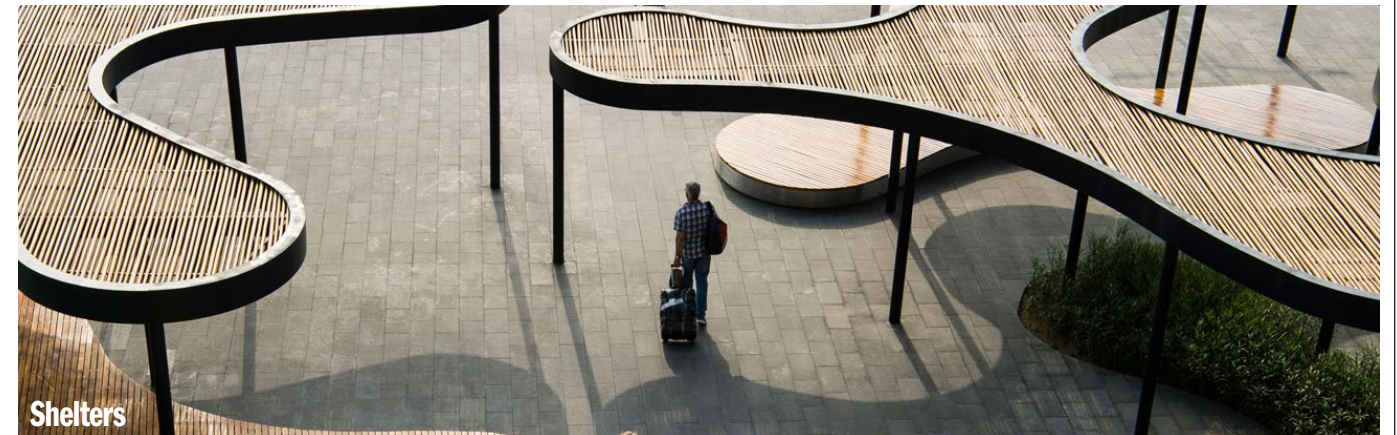
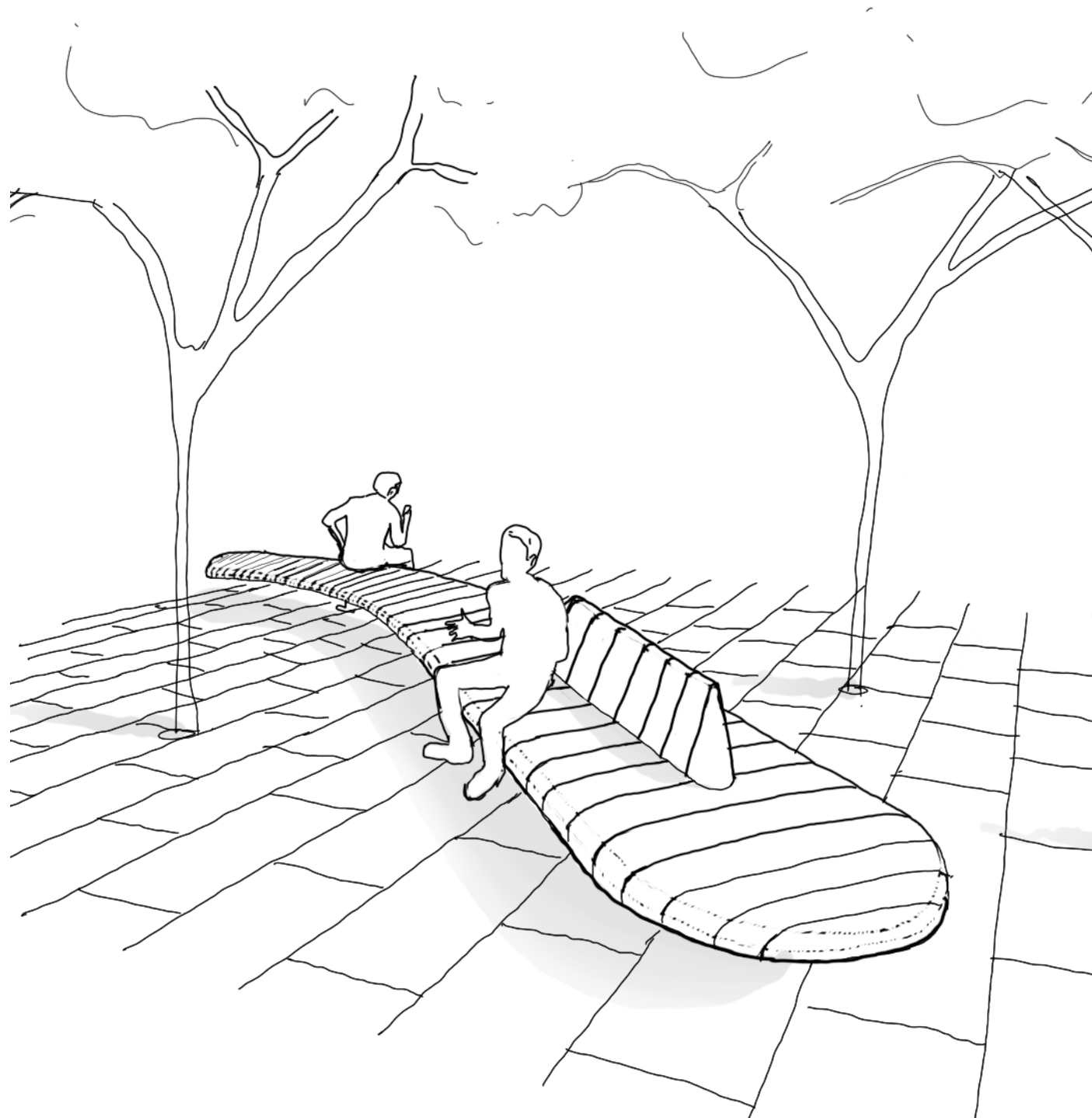
BRIDGE STREET

MATERIAL EXPRESSION



BRIDGE STREET

FURNITURE AND DETAILING

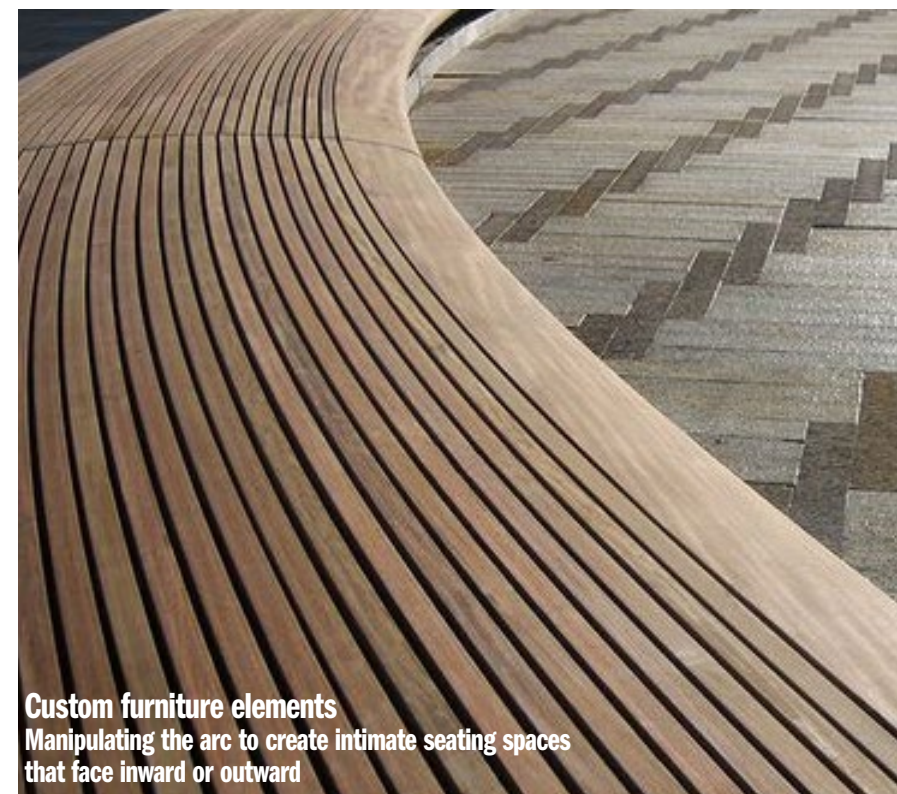


Shelters



Materiality

High quality material selection that provides warmth to the precinct and reference's Ballarat's sandstone and granite below



Custom furniture elements

Manipulating the arc to create intimate seating spaces that face inward or outward



BRIDGE STREET

VIEW EAST AT GRENVILLE STREET ENTRANCE

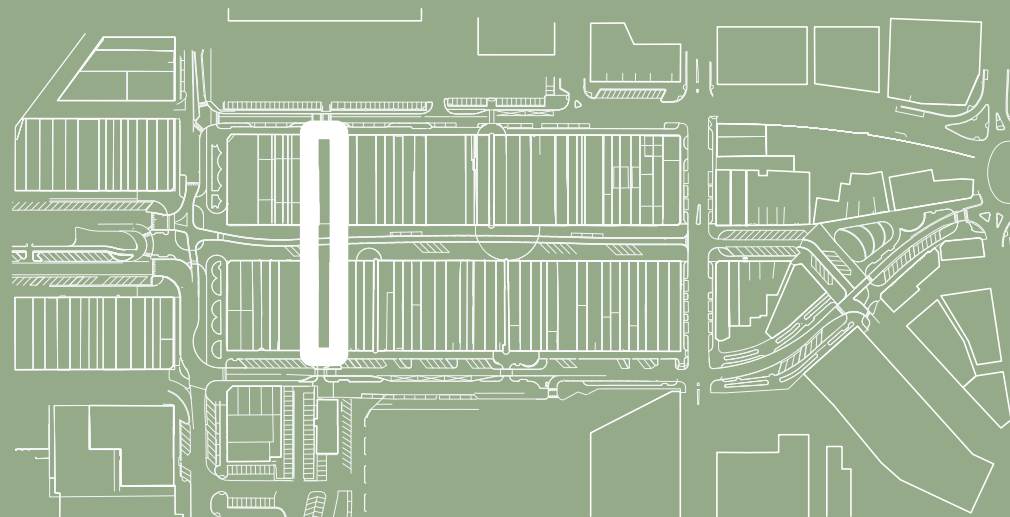


BRIDGE STREET

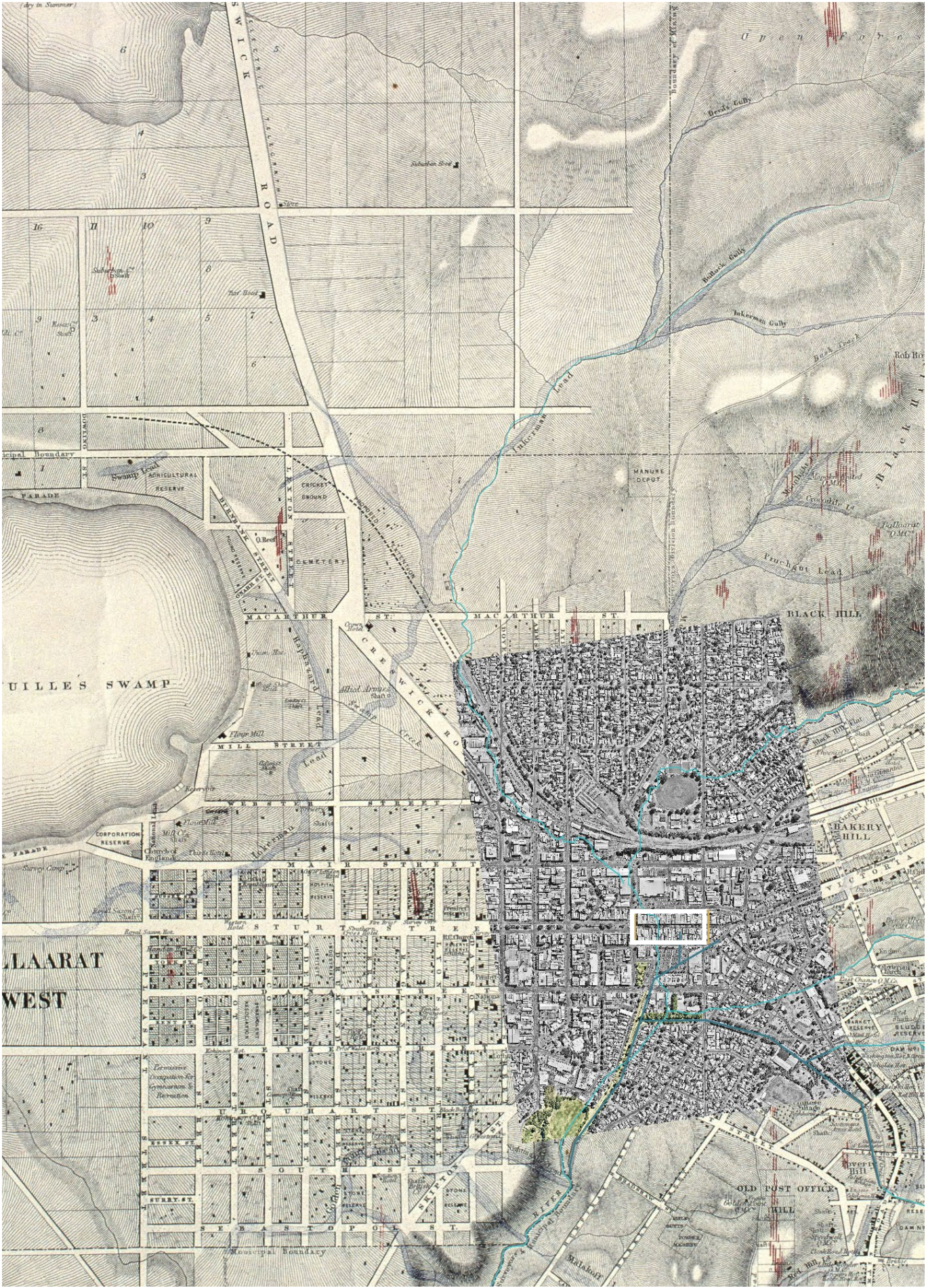
VIEW EAST TOWARDS COLISEUM WALK



COLISEUM WALK

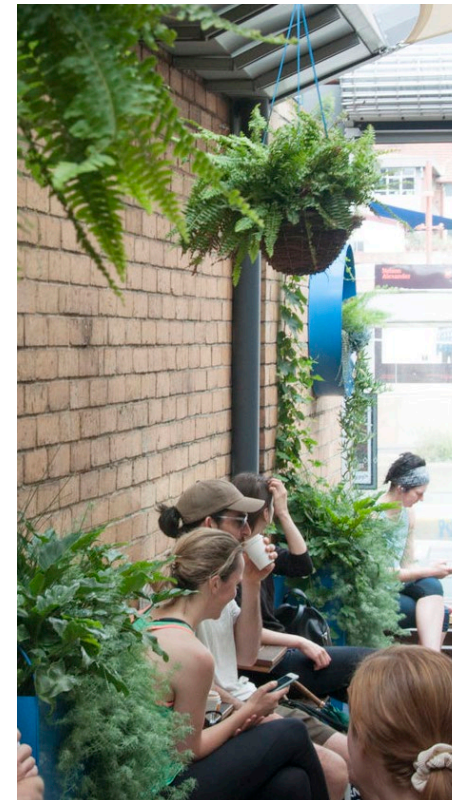
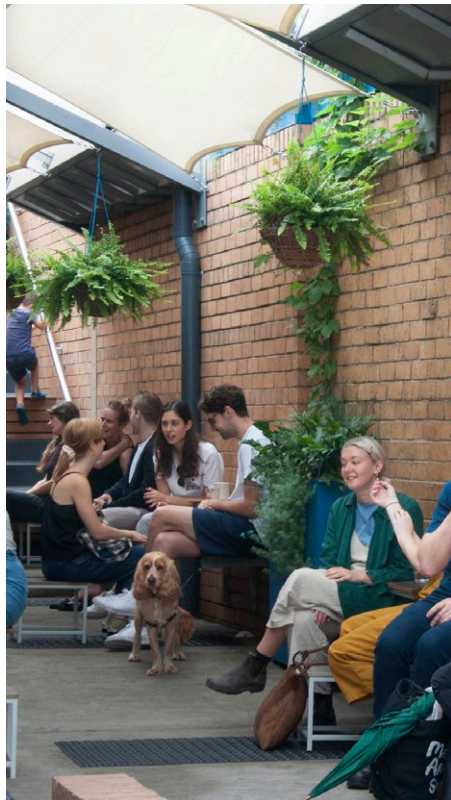


THE YARROWEE RIVER



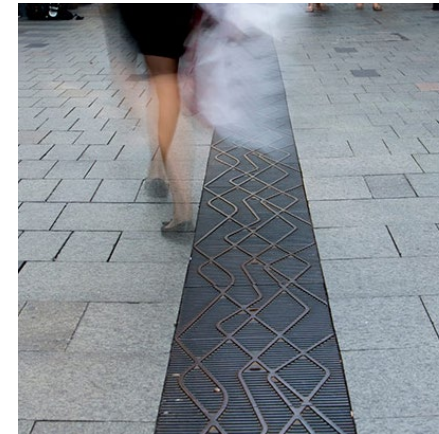
COLISEUM WALK

REFERENCE IMAGERY

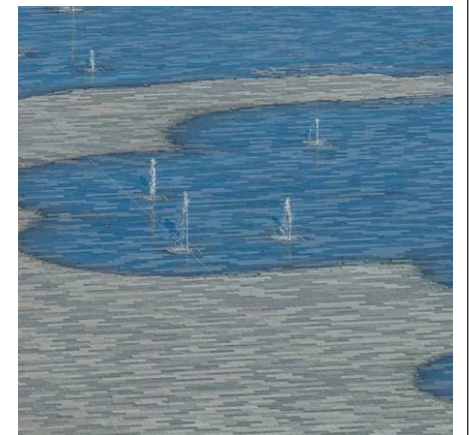
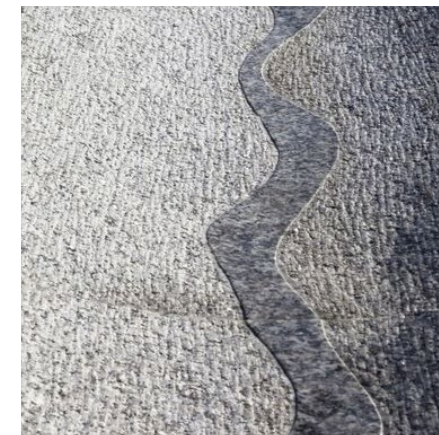
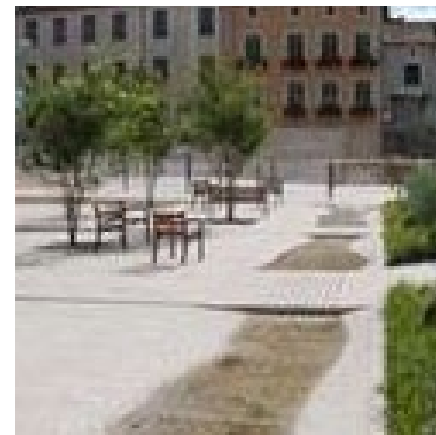


EXPRESSING THE YARROWEE

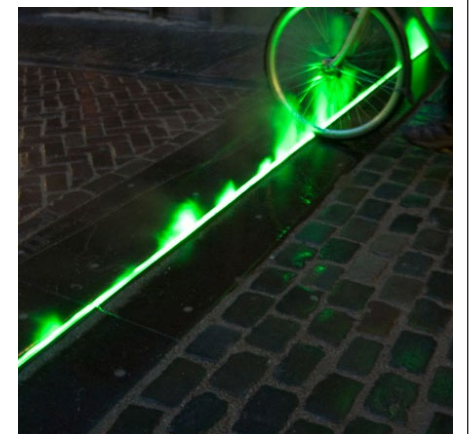
Reveal -
Literal openings to the
sounds and sight of the
Yarrowee below



Transform -
bringing Yarorwee water to
the surface

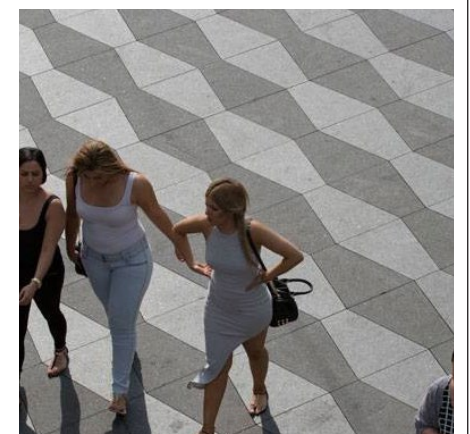
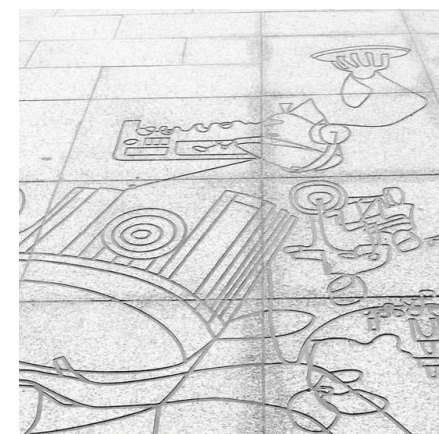


**Interpret /
represent -**
Sculptural insertions
on the finished surface
revealed through reflection



Intent: Express the literal and metaphorical
layers of the precinct by telling the story of
the Yarrowee River & creatively revealing it's
physical presence below.

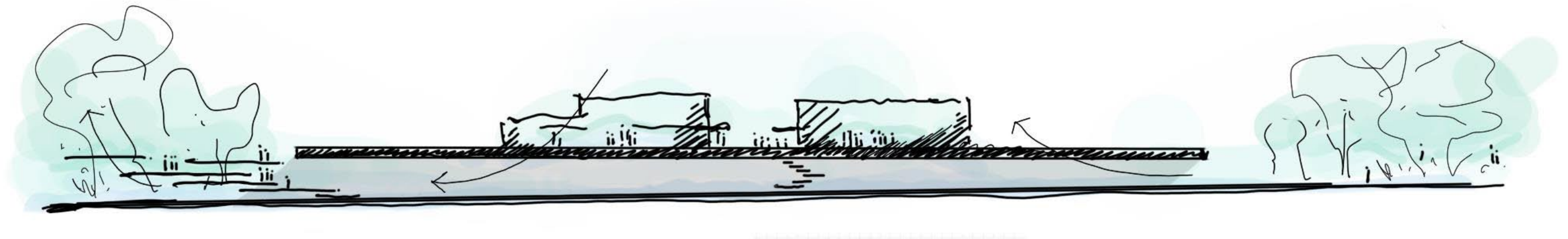
Finishes -
Express the dynamics
of the Yarrowee through
pavement treatments &
surface finishes



THE YARROWEE RIVER

DESIGN APPROACH

revealed in the streetscape

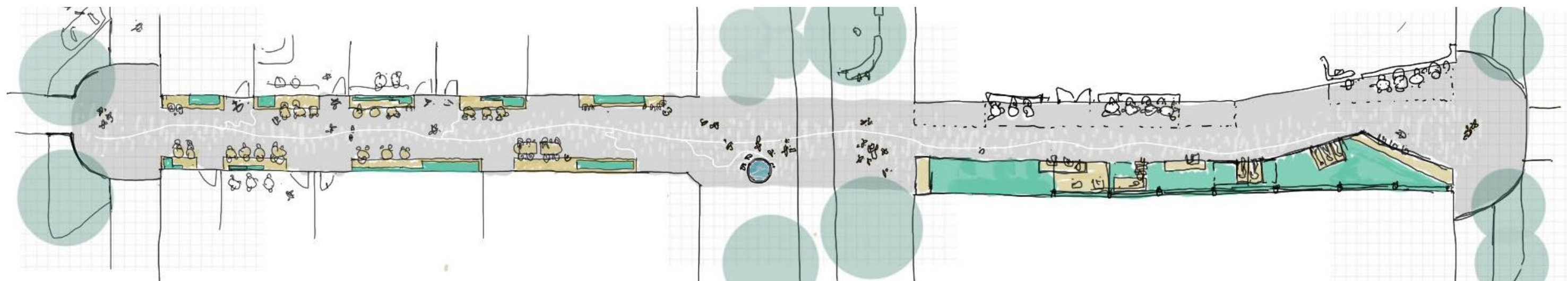
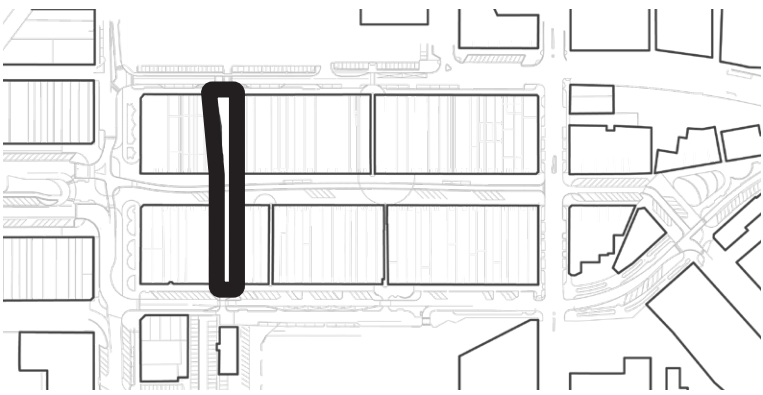


adapted in the parkland

river restored

COLISEUM WALK

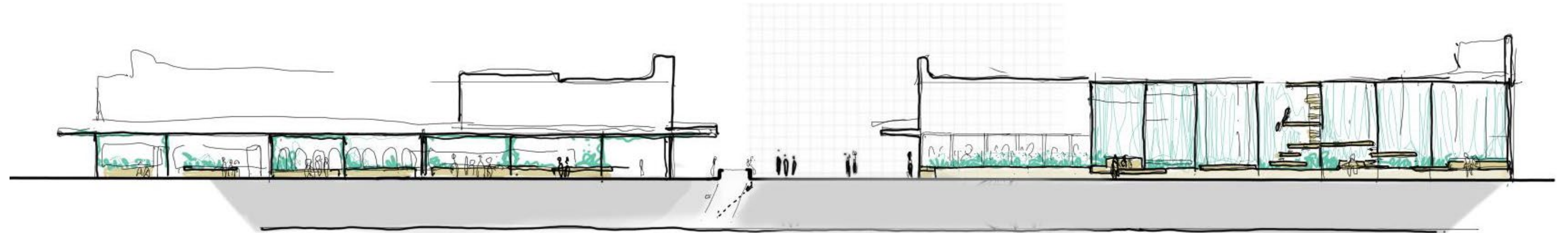
SKETCH DEVELOPMENT



coliseum walk

bridge street

norwich plaza



port holes
hear and see the river

viewing tower
to the surroundings



COLISEUM WALK

CANOPY OPTION SELECTED



COLISEUM WALK

YAROWEE PAVEMENT EXPRESSION

central drainage channel - surface water collection
pavement - water representation through finishes

