

3 Background Documents

3.1 City of Ballarat Strategic Documents

City of Ballarat Open Space Strategy (2008)

The Ballarat Open Space Strategy identifies Victoria Park as Recreation Parkland and categorises it as a Regional Park. It recommends that Master Plans be developed for all parks and reserves in this category and that they be developed with facilities, features and amenities to a standard consistent with a Regional Park category.

City of Ballarat Recreation Strategy (2014)

The City of Ballarat Recreation Strategies and principles support the following:

- The capacity for multi-functional and shared use of all buildings and recreational facilities in parks and reserves.
- Accessible and equitable access to all recreational infrastructure, buildings and facilities.
- The implementation of significant recreational projects in accordance with approved recreation budgets and works programs.

The Ballarat Strategy (2015)

The Ballarat Strategy – A Greener, More Vibrant and Connected Ballarat supports Victoria Park becoming a more activated and well-loved icon of the City and recommends the development of a Master Plan to provide guidance on Victoria Park's long term future as a recreational icon.

3.2 Victoria Park Documents

Victoria Park – A Vision Sharon Sykes (2012)

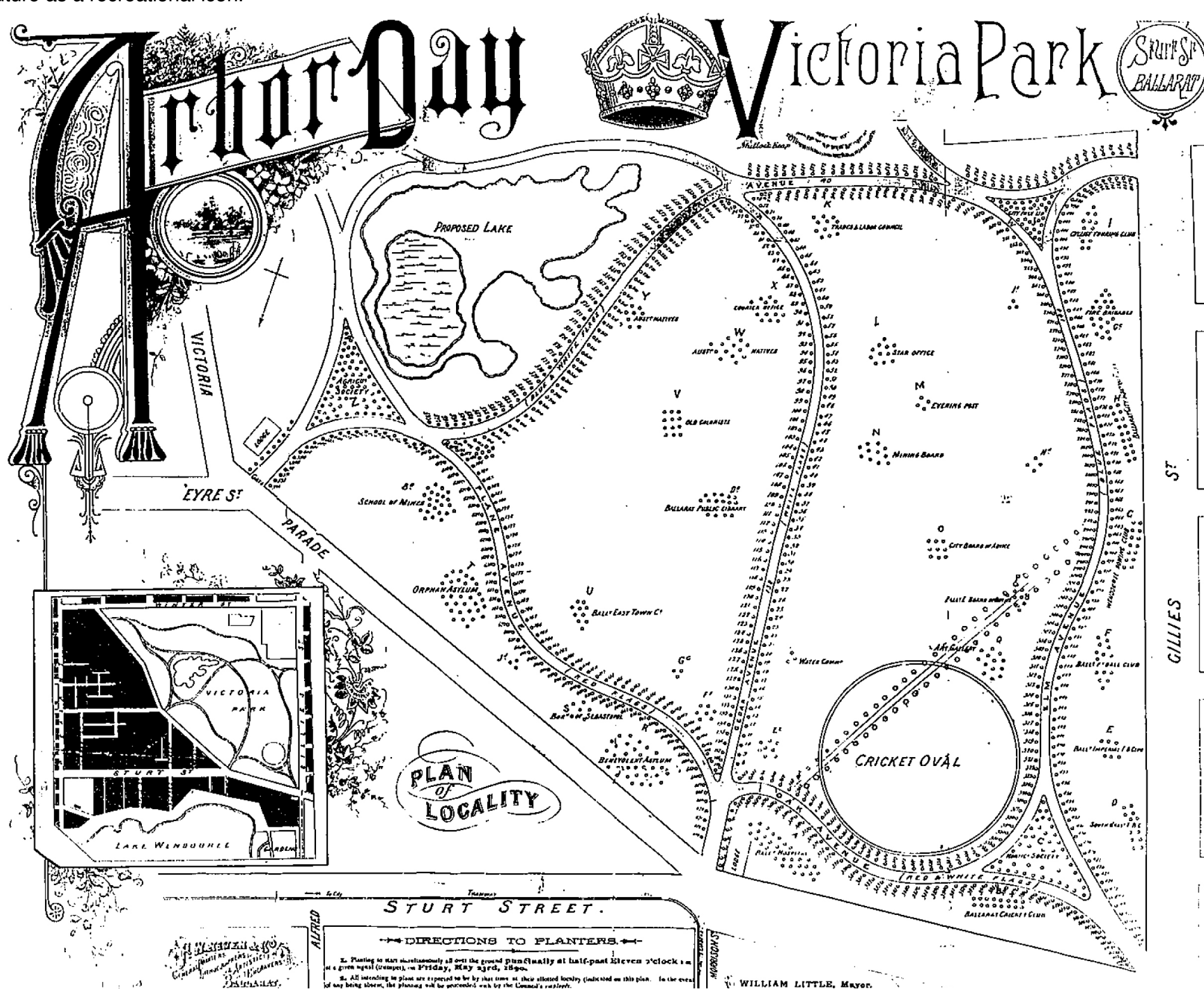
Summary of document given in Chapter 4.1 Prior Consultation.

Victoria Park Inclusive Regional Play Space Jeavons Landscape Architects and City of Ballarat (2015)

A new inclusive play space is currently being developed in the northwest corner of Victoria Park. The works will include a large fenced play space with a broad range of inclusive play equipment and design features including: water play areas, musical interactive zones, a flying fox and swing complex, and a main play structure. Supporting infrastructure will include shelters, BBQ's, toilets, paths, open lawn areas, tree planting and car parking.

Victoria Park, Ballarat Equestrian Precinct - Master Plan Report Planisphere (2007)

The Equestrian Precinct Master Plan was developed in consultation with the Ballarat Pony Club, other Ballarat based equine groups, and representatives of the City of Ballarat and the Crown. The Master Plan provides strategic guidance for the ongoing management and development of facilities and landscaping within the southern portion of Victoria Park informally occupied by the Ballarat Pony Club since 1956, otherwise known as the Equestrian Precinct. Council adopted it in 2007.



Arbor Day Plan 1890 - This plan shows the original layout of avenue trees and specimen clumps. This design is largely intact today with many of the original trees in place.

Victoria Park - Vegetation Management Plan- Remnant Grassland Site Practical Ecology Pty Ltd (2006)

This document was prepared to identify the ecological values of the native grasslands found in sections of Victoria Park and to assist the City of Ballarat to appropriately and effectively manage those ecological values.

Council’s Park’s department believe that the document provides a good guidance for management of the grasslands but would now like to see it refreshed so that it provides a concise program of works to ‘improve’ the management of grasslands ecology.

Victoria Park Management, Use and Development Framework City of Ballarat (2004)

The Victoria Park Management, Use and Development (MUD) Framework was developed by the City of Ballarat to ensure that the integrity of Victoria Park, and particularly is historical, environmental and cultural values would be protected and enhanced for the public’s use and enjoyment. The MUD Framework was considered to be an appropriate tool to achieve this objective at the time given that a number of significant development proposals had been proposed for Victoria Park in the preceding years.

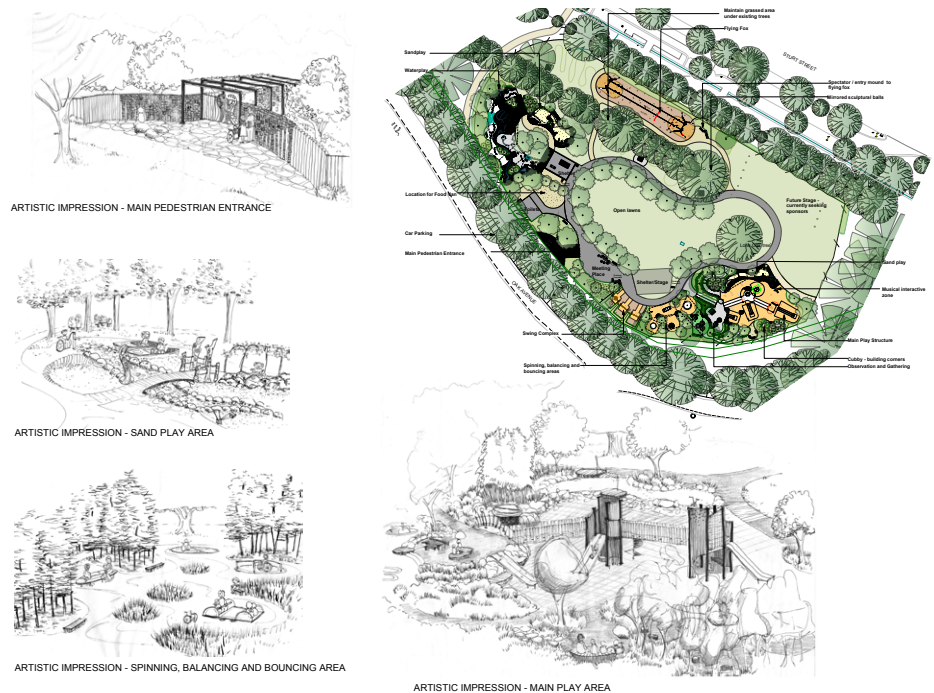
The MUD Framework included some detailed policy recommendations, some of which have since been implemented including the change of land status from a Crown Grant to Committee of Management. The Framework was undertaken with stakeholder and community input and was adopted by the City of Ballarat in 2004.

Victoria Park Community Pavilion – Feasibility Study Morton Dunn Architects (2009)

The Community Pavilion Study and design concepts were undertaken for the brick clubroom building located in the central west side of Victoria Park. The Ballarat Dog Obedience Club, the Lucas Cricket Club, and the Victoria Park Soccer Club currently occupy the building. Each tenant has their own facilities (e.g. meeting room, kitchen and toilets) within the building and each have desires to expand or modify those facilities.

The Study was undertaken in consultation with the tenants and identified that the current building has poor connectivity, is dysfunctional, and is in relatively poor condition. The Study concluded that a new purpose built facility would be more economically viable and would not only be capable of providing the growing needs of the current tenants, but could also have a broader public use for meetings, public functions and as a base for community events in Victoria Park.

The estimated cost for building the Community Pavilion, excluding car parking and associated road works, was approximately \$2 million.



Ballarat City Council Reports

3.3 Showgrounds Relocation Documents

A number of reports have been prepared for the City of Ballarat in relation to the Proposal to relocate the Showground’s proposals for future developments within the Park and these have been reviewed in the preparation of the Master Plan. These include:

Ballarat Showground’s Preliminary Business Plan Birru Pty Ltd (2015)

The Ballarat Showgrounds Preliminary Business Plan was developed for the Ballarat Agricultural and Pastoral Society (BAPS) in recognition that the current Showgrounds facilities are in poor condition, that the current site is no longer suited to their present use, and that there are significant strategic opportunities for consideration of relocation and redevelopment of the Showgrounds and events facility in the southern end of Victoria Park, near and potentially including the existing Ballarat Saleyards.

This Business Plan builds upon and reviews a 2004 Master Plan for the Showgrounds in the context of the current strategic and issues opportunities, and will be subject to further detail pending community consultation as part of the Victoria Park Master Plan process.

Victoria Park South and Ballarat Livestock Selling Centre Precinct Plan and Draft Victoria Park Precinct Volume 2: Background Report Planisphere (2007)

This Plan was commissioned by the City of Ballarat and the Department of Environment, Land, Water and Planning (DELWP) to build on the directions of Council’s Management Use and Development Framework (MUD Framework) and to provide guidance in relation to development pressures affecting the southern end of Victoria Park and the adjoining Ballarat Livestock Selling Centre (BLSC) site.

It was prepared through 2006 at a time when Council has resolved to relocate the BLSC and considering the potential use of that site, and a southern portion of Victoria Park for the relocation and redevelopment of the Ballarat Showgrounds. The latter was subsequently withdrawn.

The Plan included comprehensive community consultation and identified guiding principles, and detailed strategies and actions for the future development and use of the southern precinct of Victoria Park. It was presented to Council in 2010 with the recommendation that it be used to inform further strategic planning work in Ballarat West and the Delacombe Industrial Area.



Ballarat Showgrounds Master Plan Stratcorp (2004)

The Ballarat Showgrounds Master Plan provided a detailed analysis of the condition of the Ballarat Showgrounds and reviewed opportunities for redevelopment of the Showgrounds facilities, both on the existing site and at a number of other potential sites in the Ballarat area.

It helped to inform the preferred option to relocate and re-develop the Showgrounds facility in Victoria Park however it was not adopted by Council, and due to a number of other issues the Ballarat Agricultural and Pastoral Society (BAPS) withdrew their proposal to relocate to Victoria Park at that time.

4 Community & Stakeholder Consultation

4.1 Victoria Park Vision (2012)

Victoria Park – A Vision (2012) - Sharon Sykes

The Victoria Park Vision was the culmination of an extensive community engagement process with Victoria Park users, stakeholder groups, students, neighbours and residents.

The engagement process was undertaken over a 6-month period with the key focus on the park features, values, opportunities, and challenges. It included discussion papers, stakeholder interviews, walk and talk sessions, questionnaires, park surveys and 3 separate 'spaceshaper' workshops.

This represented the most extensive community engagement process undertaken in Ballarat for a public park and resulted in a series of statements around:

- Access
- Activation and use
- Circulation and Entrances
- Connections
- Information and Promotion
- Infrastructure
- Landscape
- Safety

It also validated the previously adopted Management Use and Development Framework resulting in the Vision statement:

- **The Lungs of the City - A Park for the People**

'The City of Ballarat will preserve and enhance the historic features of Victoria Park while encouraging the community's use and enjoyment of the parks diverse range of facilities and landscapes'

Council adopted the Victoria Park Vision in September 2012 as a document for the future development of Victoria Park. Council also adopted recommendations to undertake supporting strategies for a:

- Tree Replacement Management Plan
- Traffic and Access Management Plan
- Drainage and Storm Water Management Plan

The following principles were established and approved by Council as part of the vision.

Landscape and Vegetation

- Preserve the Park as environmental and sustainable green space.
- Preserve and enhance trees and avenues to maximise shade, amenity, windbreak, and separation of Park areas.
- Native grasslands to be preserved, well maintained and interpreted.

Access

- Access to and within the Park to be suitable for people of all ages and abilities.
- At some times access may be restricted to allow for specific activities and events.

Circulation and Entrances

- Traffic management measures will minimise vehicle impacts for pedestrians, cyclists and park users.
- Safe and good quality pathways will improve circulation and movement through the Park.
- Entrances to the Park will be standardised to create a park identity and sense of arrival.
- Provision of appropriate car parking areas.

Connections

- Victoria Park will be well connected to Lake Wendoree and other local open space in central Ballarat.
- Linkages for walking and cycling will connect with Victoria Park where possible.
- Safe road crossings will improve the connection to Victoria Park for the local community.

Information and Promotion

- The Park will be well promoted to the community through signage and media.
- The heritage and environmental significance of the Park will be interpreted for all park users and the community to learn and understand the qualities of Victoria Park



Photo from within Victoria Park, Ballarat

Activation and use

- Families, individuals and groups will be encouraged to use the Park year round for a wide range of activities.
- Multiple activities take place in shared spaces at all times, days and seasons.
- The Park will be able to host major events in a natural open space setting.

Safety

- The Park will be a safe and comfortable space that people want to spend time in.
- Minimising vehicle impacts and seeking to improve visibility and passive surveillance will improve public safety.
- Activation of spaces in the Park will improve confidence in the safety of Victoria Park

Infrastructure

- High quality facilities to be provided to support open space activities.
- Built development to be minimised to ensure open space qualities are preserved.

4.2 Master Plan Development

The Master Plan was developed by Urban Initiatives under guidance from the City of Ballarat. A Project Control Group (PCG) was integral to the development of this report. The following City of Ballarat Staff formed the PCG for this project:

Adam Parrott - Senior Landscape Architect (Project Manager)
Terry Demeo – Manager Planning Implementation
David Grant – Vegetation Planning Officer
Jim Leonard – Coordinator Traffic and Transport
Chris Gardner – Senior Recreation Planning Advisor
Daryl Wallis – Coordinator Parks and Gardens
James Guy – Acting Manager Planning Implementation
Jeff Johnson – Manager Community Events

4.3 Master Plan Consultation 2015

Pre Master Plan Consultation

Community consultation was undertaken from April to May 2015 to seek the community's and stakeholders ideas and comments prior to the development of a Draft Master Plan. The consultation process included an Open House which was attended by approximately 250 people, a detailed survey which received 190 formal responses, meetings and interviews with key recreational and stakeholder groups, and six written submissions.

The consultation process assisted Council to consider the community's responses to a number of development challenges and proposals prior to the preparation of the Preliminary Draft Master Plan. The consultation process and outcomes are summarised in detail in Appendix 8.1.

Preliminary Master Plan Consultation

Community consultation on the Preliminary Draft of the Master Plan was conducted for a month through August to September 2015. The consultation process included exhibition of the Preliminary Draft Master Plan and a survey that allowed respondents to indicate to what extent they supported key recommendations across eight different themes within the Master Plan. 201 survey responses and submissions were received; providing further guidance to assist in the preparation of the Final Draft. The community feedback and outcomes are summarised in detail in Appendix 8.4.

Final Draft Master Plan Consultation

To be provided following completion of the community consultation on the Final Draft of the Master Plan.