

6.5 Traffic and Vehicle Management

Objective

- Improve safety and amenity for all park users including pedestrians, cyclists, drivers and all other recreational users by reducing the impacts of vehicles and traffic congestion both within and around the Park.

Design Principles

- Improve traffic flow in and around the Park and for major events.
- Prioritise safety and amenity for pedestrians, cyclists and vehicles.
- Minimise car access to grassed areas.
- Implement traffic slowing measures.
- Improve road surfaces, access to facilities and car parking.

Recommendations:

Management

- Develop Traffic Management Plan that provides direction around problem intersections and traffic speeds both within and outside the Park. This should consider:
 - Turning in and out of Entrance 1 (Gillies Street).
 - Turning in and out of Entrance 2 (Sturt Street).
 - The creation of a pedestrian and cyclist crossing point on Sturt Street from Entrance 2 to Morrison Street. This would require traffic lights subject to Vic Roads Approval.
 - Closing Winter Street and re-opening Gillies Street.
 - The installation of a roundabout at the central intersection.
 - Sealing/resurfacing of roads and car parks to improve drainage and access.
 - Speed limit signage.
 - Consideration of speed humps as traffic slowing measures.

Design

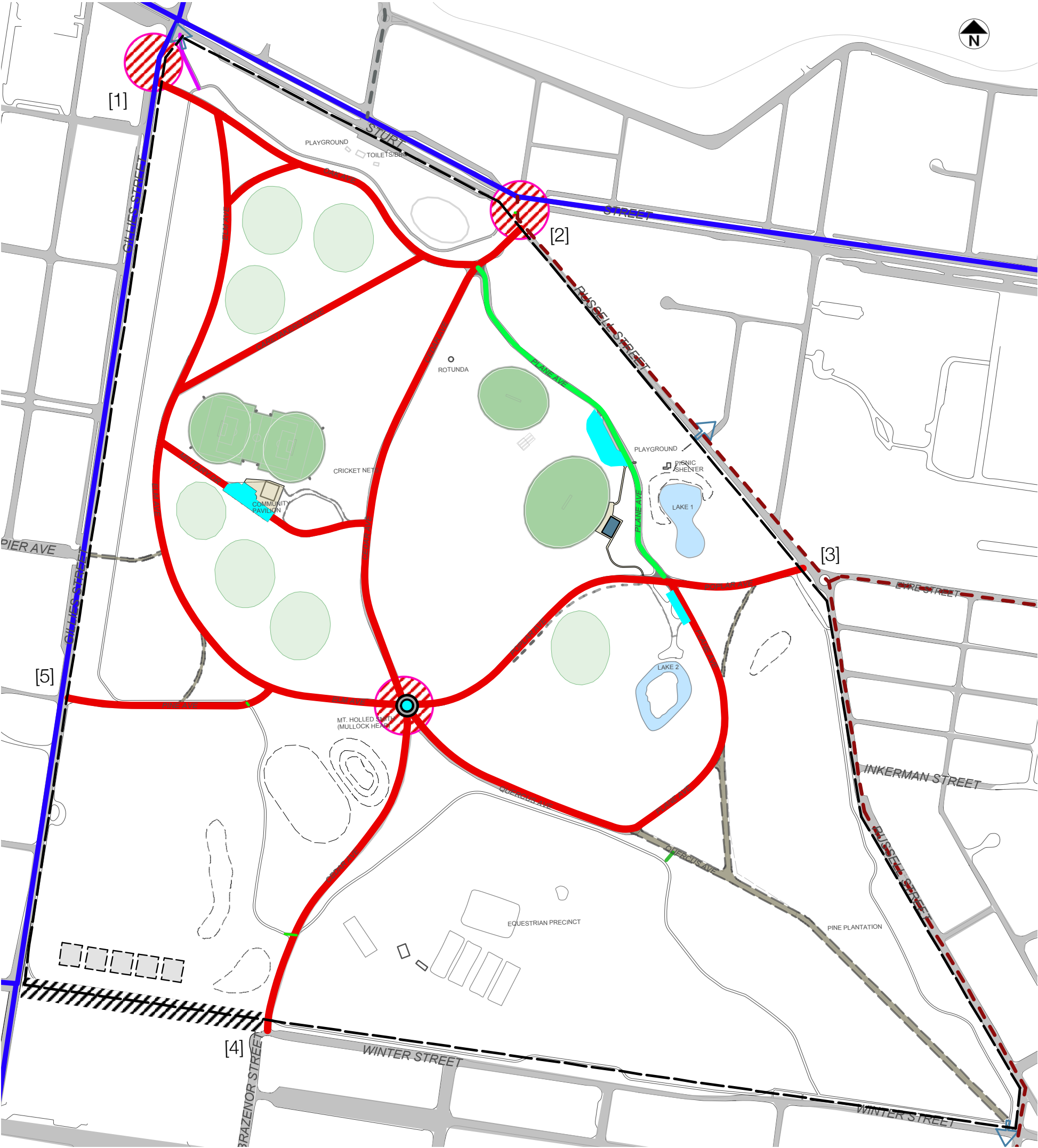
- Prepare plan to undertake traffic modifications at Entrances 1 and 2 to improve flow and safety.
- Consolidate and seal car park at existing clubrooms.
- Seal gravel section of Plane Avenue and provide new sealed car park and bus drop off area to service the new pavilion.
- Continue to implement post and rail barriers and consider alternative means of restricting vehicular access to grassed areas.
- Consider traffic calming measures that will not hinder cyclists.
- Consider closing Winter Street, re-opening Gillies St connection at south-west corner / events space and relocation of saleyards.

Implementation

- Construct and implement above mentioned modifications to roads and car parks.
- Install roundabout at central intersection.



Proposed Traffic and Vehicle Management Plan



KEY

- VEHICLE CIRCULATION
- INTERNAL ROAD
 - PROPOSED SEALED CAR PARK
 - FEEDER ROAD
 - ARTERIAL ROAD
 - POTENTIAL CLOSURE
 - PROBLEM INTERSECTION
 - PROPOSED ROUNDABOUT
 - [1] ENTRANCE NUMBER

- PEDESTRIAN PROMENADE
- GRAVEL ROAD TO BE SEALED

Improve safety and amenity for all Park users including pedestrians, cyclists, drivers and all other recreational users by reducing the impacts of vehicles and traffic congestion both within and around the park.

6.6 Access, Circulation and Connections

Objective

- Improve access, circulation and connections, both within the Park and to the Park from adjacent streets, and to surrounding landscapes, to improve safety and amenity for pedestrians and cyclists.

Design Principles

- Ensure path system is suitable for pedestrians of all abilities.
- Improve path connections to new and existing facilities within the Park.
- Improve surface quality of paths and increase the number of DDA compliant paths.
- Improve connections to the wider surrounds including Lake Wendoree, surrounding schools and the development area to the west for pedestrian and cyclists.
- Ensure suitable pedestrian and DDA compliant crossings at key points leading into the park.
- Improve pedestrian connectivity to southern areas of Park.
- Increase number of entrance points from adjacent streets connecting into Parks path network.
- Explore possibility of pedestrian and cycle link via the old rail line to the growth corridors of Ballarat West.

Recommendations

Design

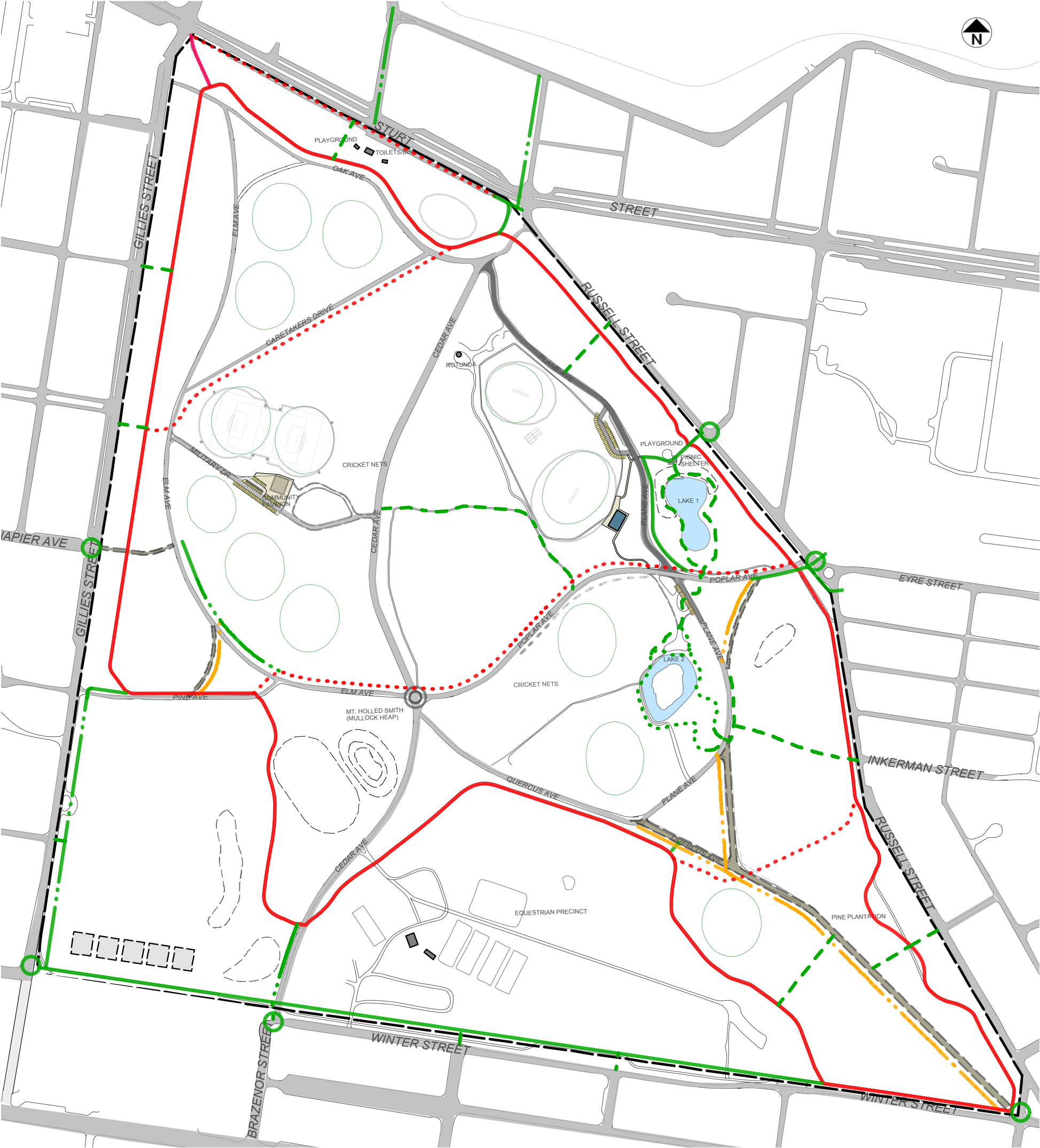
- Continue to maintain VicTrack as the key passive walking loop and provide integrated medium and short circuit gravel path loops. Gravel type and width should match the existing VicTrack circuit.
- Install drinking fountains and seating to VicTrack, particularly at nodal points (as per Facilities Management Chapter).
- Create major pedestrian and cyclist boulevard entry to Park from south-east corner (Russell and Winter Streets).
- Create new bicycle & pedestrian entry on Gillies St connecting Napier Ave to Elm Ave.
- Create new pedestrian crossing point on Sturt Street at Entrance 2.
- Create regular path connections to Park path network from adjacent streets.
- Explore opportunities to improve connections through equestrian precinct (in consultation with Pony Club and Council).
- Create path connections to new event space in south-west corner (as part of events space master plan).
- Clearly sign pedestrian and cyclist crossing points.
- Provide quality gravel paths in place of existing goat tracks.
- Implement way finding signage at path intersections for pedestrians.

Implementation

- Review existing path connections and access points, particularly where small, unformed goat tracks indicate high use, to determine localised improvements.
- Construct new pedestrian paths including new circuit loops to VicTrack, south-east boulevard and Gillies St / Napier Street connection.



Proposed Access, Circulation and Connections Plan



- KEY**
- PEDESTRIAN CIRCULATION
- VICTRACK
 - PROPOSED NEW VICTRACK
3KM & 1.5KM LOOPS
 - EXISTING PEDESTRIAN PATH
 - PROPOSED NEW PEDESTRIAN
PATH
 - PROPOSED SECONDARY
PEDESTRIAN LINKAGE PATH
 - PROPOSED BOARDWALK
 - PROPOSED PEDESTRIAN
PROMENADE
 - PROPOSED DDA COMPLIANT
CROSSING

Improve access, circulation and connections, both within the park and to surrounding landscapes, to improve safety and amenity for pedestrians and cyclists.

6.7 Public Appreciation and Signage

Objective

- Enhance public knowledge about the site, it's character, vegetation, points of interest and history through improved interpretative and way finding signage.

Design Principles

- Signage should be kept to a minimum and limited to key information only.
- Signage should be designed by qualified professionals with the ability to produce high quality outcomes that are appropriate to the setting, have clear graphic content, and are fabricated from suitable and durable materials.
- All additional wayfinding, directional and interpretive signage is to be kept to a minimum, and contained to major paths, roads and key features within the Park.
- Minimal interpretative signage and pedestrian / cyclist scale way finding signage should be prioritised.
- There is no precedent for sculptural elements in the Park to date. If sculptural elements were proposed they would need to be carefully assessed and sited so as not to impact on park character.
- Signage styles to be consistent with City of Ballarat Street and Park Furniture Guidelines.

Recommendations

Design

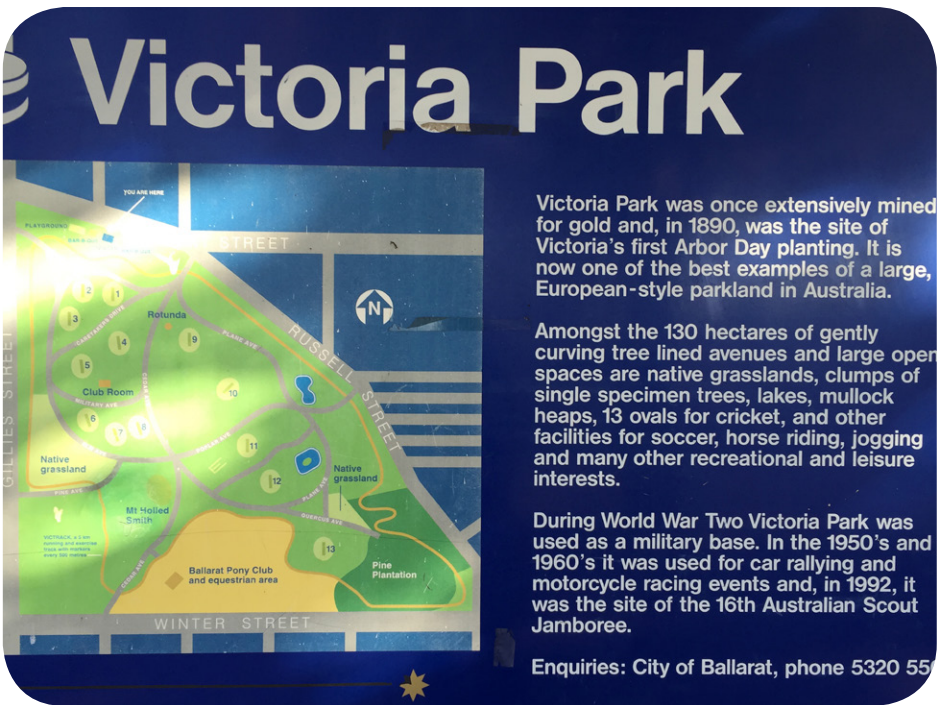
- Maintain existing vehicular entry signs with updates to maps as required.
- Retain existing arched pedestrian entry signs on Sturt Street.
- Develop a signage layout plan indicating the number and locations of each sign type or include all signs in an asset management plan.
- Provide new dog off leash area signage to the lakes precinct car park near oval 11.
- Provide interpretive signage of historic elements including gold mining and mullock heap, Arbor Day, military use, major events incl. motor racing and Scout Jamboree etc.
- Provide grasslands interpretation signs at strategic locations. The number of grasslands signs should be increased to cover all grassland areas.
- Provide simple low impact labels attached to significant trees.

Implementation

- Design and document a park signage suite for pedestrian / cyclist level way finding and interpretative signage including history, grasslands, significant trees and entry sign as described above.
- Install new dog off leash area signage to the lakes precinct car park near oval 11.



Studio Binocular way finding sign



Existing

6.8 Hydrology and Lake Improvements

Objective

- Enhance the amenity and sustainability of Park water bodies to improve the landscape experience, mitigate flooding, increase water capture and storage for re-use and improve water quality. Consolidate lakes precinct into improved area that reflects design intent of original plans.

Design Principles

- Improve Park sustainability by improving drainage, capacity of lakes and implementing natural filtration and water harvesting.
- Enhance the amenity of existing water bodies through improvements to access, edge conditions, vegetation, and circulation.

Recommendations

Design

- Introduce planting, boardwalks and loop path connections around lakes.
- Provide new sealed car parking along Poplar Avenue road edge and return existing gravel lake edge parking at the southern lake (lake 2) to park landscape.

- Upgrade the network of grassed swales to direct flows toward lake areas for capture and storage.
- Create new wetlands/lakes east of St Leger’s Pond and in the events space (southwest corner) to improve quality of storm water run off.

Implementation

- Review and refine hydrological concepts for existing lakes including storage and re-use capacity, proposed wetlands, and event space water body and swale refinements.
- Develop concept for events space water body (this should form part of events precinct master plan)
- Develop concept plans for lakes precinct including improved circuit paths, new sealed road edge car parking, boardwalks, vegetation, edge conditions, furniture and wetlands.
- Incorporate water re-use into A Park Operations Plan (Refer Landscape and Vegetation Chapter).

