

Submissions & Interviews

Sustaining growth. Strengthening communities.



Six detailed submissions were received from residents and stakeholders including:

- A local resident
- Ballarat Environment Network
- Ballarat Dog Obedience Club
- Ballarat Sebastopol Cycling Club
- Victoria Park Football Club
- Wendouree Archery Club

Interviews were also conducted with other known recreational stakeholder groups to ensure their ideas and issues could be considered within the Draft Master Plan including:

▶ Ballarat Association Schools	▶ Ballarat Sebastopol Cycling Club
▶ Ballarat Cricket Association	▶ Ballarat Triathlon Club
▶ Ballarat Dog Obedience Club	▶ Lucas Cricket Club
▶ Ballarat Fly Fishers	▶ Sport Climbing Victoria
▶ Ballarat Football League	▶ St Patrick's School
▶ Ballarat Pony Club & Friends of Ballarat Eventing Association	▶ Victoria Park Soccer Club
▶ Ballarat Regional Athletics Centre	▶ Wendouree Archery Club

Information gathered from these submissions and interviews will be considered in developing the Draft Master Plan.



Victoria Park Master Plan

Sustaining growth. Strengthening communities.



WHERE TO FROM HERE!

Thankyou for your submissions and comments received during the Community Engagement period. Your input will be considered and used to help inform the development of the Draft Master Plan. You will have further opportunities to comment on the Master Plan before it is finalised and presented to Council. The following timelines are indicative of the process to complete the Master Plan

June	Preparation of Draft Master Plan
July	Presentation of Draft Master Plan to Council
July-August	Public exhibition and feedback on Draft Master Plan
September	Amend and present Final Master Plan to Council for endorsement

Victoria Park

Sustaining growth. Strengthening communities.



Green Infrastructure case study #1: Victoria Park, Ballarat

Russell Street Stormwater Harvesting

Current situation

- A masterplan for Victoria Park is currently being prepared and there may be an opportunity to introduce some water management concepts and embed the strategies and the spatial requirements in the masterplan.
- There are a number of playing fields that will be constructed in this part of Victoria Park, each with an estimated irrigation demand of approximately 11.5 ML/yr.
- Two ponds are located in the eastern area of Victoria Park, providing high amenity value and also providing an informal source of irrigation water in dry times. The northern pond, noted here as 'St Leger Pond' captures stormwater runoff from a residential catchment surrounding the park. There is no treatment of the stormwater, and algal blooms have been noted in the pond in the past. The outflow from this pond passes south through a swale system to an ornamental lake in the park. Two separate inflows also enter the swale system passing through to the ornamental lake, one from St Patricks College (without treatment) and one from a small area of parkland to the south.
- The 'St Leger Pond' receives stormwater from a 10 ha residential catchment that drains towards the intersection between Russell St and St Leger Close. Part of Victoria Park (approx 6 ha) also drains towards the St Leger Pond and may flow into it. It has been noted that the pond water levels are sustained through dry periods.
- Another 10 ha catchment (including part of St Patricks College) also flows into Victoria Park near the Eyre Street intersection. Stormwater runoff from the St Leger Pond catchment and the St Patricks College catchment drain towards a circular ornamental lake downstream of Plane Avenue.
- Flooding issues have been experienced on Plane Avenue, perhaps due to a collapsed culvert where the swale flow passes under the road to the ornamental lake.

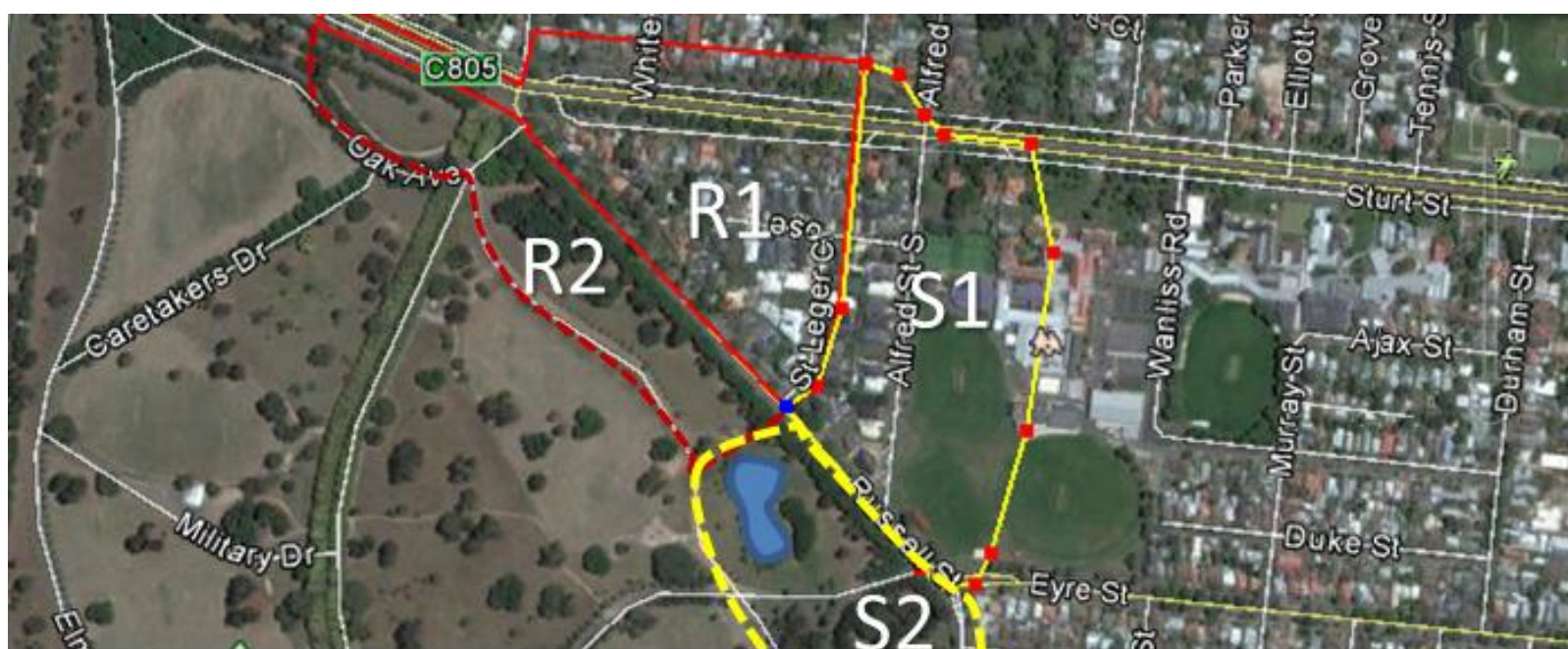


Figure 1: Catchments draining to St Leger Pond (R1 & R2) and on to the Ornamental Lake (R and S)

Concept

This case study looks at an option to harvest water for irrigation, address a localised flooding issue and improve stormwater quality.

Modelling

- A MUSIC model was set up to represent the current scenario
 - Rainfall 747 mm/yr, 1955-1964, Ballarat Aerodrome plv089002
 - The R1 catchment is estimated to be 10 ha and 75% impervious. The R2 catchment is estimated to be 6 ha and 1% impervious. St Leger pond has a surface area of approximately 4600 m² and an assumed average depth of 2m, extended detention depth 0.1m and notional detention time of 2 hrs with a wide weir allowing for overflow.



Figure 2: Screen image from the MUSIC model of the catchment draining to the St Leger Pond.

Results

Significant quantities of pollutants enter the pond and accumulate, increasing the likelihood of algal blooms occurring in the St Leger pond

	Inflow to pond	Outflow	Reduction
Flow	60 ML/yr	55 ML/yr	9 %
Total Suspended Solids	16,700 kg/yr	1,200 kg/yr	93 %
Total Phosphorus	31 kg/yr	6 kg/yr	81 %
Total Nitrogen	153 kg/yr	77 kg/yr	50 %

Concepts (potential solutions to address identified issues)

A. Wetland to manage stormwater pollutants entering the St Leger pond

To improve stormwater quality before it enters the St Leger pond, a wetland could be constructed upstream of the pond to reduce stormwater pollutants, protecting the pond and making water that flows downstream suitable for storage and reuse for irrigation. The reduced quantities of stormwater pollutants will reduce the risk of algal blooms occurring.

- St Leger wetland: 0.35m average depth, 0.35m extended detention, 72 hr detention time
- Surface area required to meet best practice pollutant reduction is up to about 3,000 m², consisting of a sedimentation area (inlet pool with volume 400 m³) and dense wetland planting in a shallow zone (surface area 2,400 m²).
- Significant quantities of pollutants enter the wetland and are treated

	Inflow to pond	Outflow	Reduction
Flow	60 ML/yr	57 ML/yr	5 %
Total Suspended Solids	16,700 kg/yr	3,400 kg/yr	80 %
Total Phosphorus	31 kg/yr	9 kg/yr	71 %
Total Nitrogen	153 kg/yr	84 kg/yr	45 %

St Leger Wetland: A wetland area of approximately 3,000 m² is required to manage the stormwater pollutant entering the St Leger pond.



Figure 3: Schematic with a green outline (not to scale) illustrating the wetland proposed to remove pollutants from the St Leger catchment.

B. Managing stormwater pollutants from the St Patricks Catchment

To manage the stormwater pollutants from the St Patricks Catchment (which includes part of the residential area on Alfred Street South) a wetland or swale could be configured between the Russell St inflow point and Plane Avenue. The wetland would be able to make the water suitable for storage and reuse for irrigation. A swale could significantly reduce some of the key pollutants, but is not as effective as a wetland. The reduced quantities of stormwater pollutants will reduce the risk of algal blooms occurring.

- The S1 catchment is estimated to be 10 ha and 50% impervious.
- St Patricks wetland: 0.35m average depth, 0.35m extended detention, 72 hr detention time
- Surface area required to meet best practice pollutant reduction is up to about 2,000 m², consisting of a sedimentation area (inlet pool with volume 400 m³) and dense wetland planting in a shallow zone (surface area 1,500 m²).
- Significant quantities of pollutants enter the wetland and are treated

	Inflow to pond	Outflow	Reduction
Flow	39 ML/yr	37 ML/yr	5 %
Total Suspended Solids	11,100 kg/yr	1,900 kg/yr	83 %
Total Phosphorus	20 kg/yr	5 kg/yr	73 %
Total Nitrogen	99 kg/yr	54 kg/yr	45 %

St Patricks Wetland: A wetland area of approximately 2,000 m² is required to manage the stormwater pollutant entering the park from the St Patricks catchment.

- St Patricks swale: 250m length, 5m width, 1% grade, 1m base width and 0.5m depth
- Sediment is effectively intercepted with a swale, but the nitrogen load is not reduced as effectively as with a wetland.

	Inflow to pond	Outflow	Reduction
Flow	39 ML/yr	39 ML/yr	0 %
Total Suspended Solids	11,100 kg/yr	1,300 kg/yr	88 %
Total Phosphorus	20 kg/yr	7 kg/yr	67 %
Total Nitrogen	99 kg/yr	75 kg/yr	24 %

A swale of approximately 250 m length, 5m top width, 1m base and 0.5m depth at 1% grade is able to effectively manage sediment from the St Patricks catchment. The reduction in total nitrogen is not as effective as can be achieved with a wetland.
The risk of algal blooms in the ornamental lake downstream is best managed when the catchment pollutant loads are effectively reduced (e.g. with a wetland).

C. Broader water harvesting and drainage swales for Victoria Park

To harvest stormwater across Victoria Park, and best manage drainage lines, a network of grass or vegetated swales could be introduced as illustrated in the figure below. They generally align with the road/path networks and present an opportunity to embellish the aesthetic appeal of these areas whilst enhancing the drainage function to reduce the occurrence of boggy areas and enable harvesting of stormwater from almost all parts of Victoria Park through this network. This overall drainage concept would also increase the catchment to the Poplar Avenue / Plane Avenue Pond area (with about 25ha of the internal park area contributing).



Figure 4: Potential network of swales to improve the overall drainage of Victoria Park.

Victoria Park Drainage Strategy: Contour drains can be included to capture runoff and direct it to storage areas across the park. This could increase yield to the Russell Street stormwater harvesting scheme, and provide smaller opportunities in the south east of the park

D. Irrigation from the Ornamental Lake or a new pond

Building on concepts A, B and C above, irrigation could occur by drawing down the water level in the existing Ornamental Lake or by creating a new pond. This concept assumes that (A) a 3,000m² wetland has been created to manage stormwater from the St Leger catchment, (B) a 250m swale or 2,000m² wetland has been created to manage stormwater from the St Patricks catchment, (C) a network of swales/spoon drains (grassed or vegetated) direct a greater proportion of the park area towards the main storage (estimated at between 20 – 25 ha).

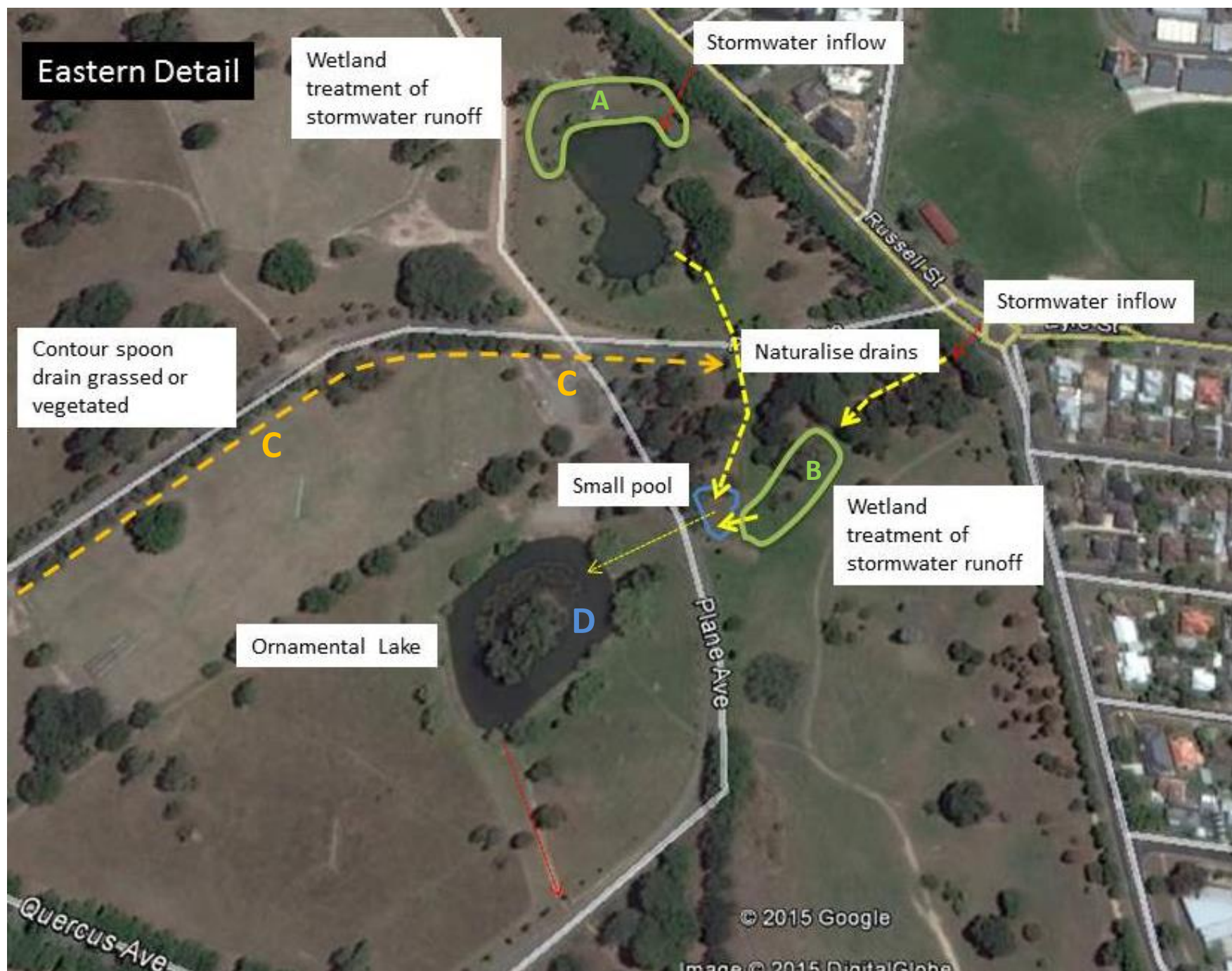


Figure 5: Illustration of stormwater treatment wetland and water harvesting scheme drawing from the Ornamental Lake

Modelling irrigation

The ornamental lake has an approximate surface area of 5,800m² but with an island area in the centre that reduces the effective water surface area to an estimated 4,700m². This surface area has been used in the modelling to represent the water available for irrigation from the ornamental lake. The option of also creating a new lake (up to 3,500m²) was simulated by further increasing the surface area. The lake was estimated to have an average depth of 1.5m. To enable reuse, draw down of the lake between 0.25 - 0.5m was simulated.

The modelled irrigation demand is 11.5 ML/yr, which is sufficient to irrigate approximately 2 ovals. The modelling assumed a seasonal irrigation distribution (PET-Rain).



City of Ballarat

Victoria Park Master Plan

Summary of Sport / Recreation
Considerations for the Victoria Park
Master Plan

May 2015

Contents

1. Introduction: 3

2. Strategic Alignment 4

2.1 Council Plan 2013–2017 (Review 2014/15) 4

2.2 City of Ballarat Recreation Strategy 2014 6

3. Industry Sport and Recreation Trends 6

3.1 Recreation Trends 6

4. Summary of Consultation Outcomes 8

Appendix A.2015 Stakeholder Summary Update16

Appendix B.Victoria Park Visioning Stakeholder Interviews 201

1. Introduction:

SED Advisory has been appointed by the City of Ballarat to present a summary of sport and recreation requests based on consultation with a selection of key stakeholders for consideration in the development of the Victoria Park Master Plan, 2015.

The summary of key issues and potential implications has been developed having regard to:

- ▶ Alignment with relevant Council plans and strategies;
- ▶ Identification of industry sport and recreation trends;
- ▶ Telephone interviews with a selection of key stakeholders¹; and
- ▶ A review of the *Victoria Park Visioning Stakeholder Interviews (2012)*, prepared by Sharon Sykes.

Why is providing for Sport and Recreation important?

Council currently provides and/or facilitates access to a range of sport, recreation and leisure opportunities across the municipality. These add to the culture, lifestyle and character of the region as well as enhance the liveability of the City and are therefore recognised as an important part of a well-balanced lifestyle.

The benefits associated with participating in sport and physical activity include personal enjoyment, social interaction, physical and mental health, personal achievement, community involvement ('social capital'), community resilience and opportunities for expression of community pride.

The health benefits of participation in regular physical activity have been well documented and include:

- ▶ Reduced incidence of cardiovascular disease, stroke, obesity and other preventable illnesses.
- ▶ Increased life expectancy.
- ▶ Reduced incidence of bowel cancer and certain other cancers.
- ▶ Reduced incidence of stress, anxiety, depression and improved overall mental health.
- ▶ Reduced incidence of chronic conditions such as diabetes, arthritis and asthma.

Physical activity participation builds self-esteem and positive self-image, enhances life satisfaction and perceived quality of life. Evidence also suggests that regular club based participation can assist in reducing destructive behaviour and negative social activity, build understanding between diverse cultures and reduce isolation, loneliness and alienation.

¹ Interviews were conducted with stakeholders that were identified by Council.

Participation in a broad range of leisure activities has the potential to improve physiological and mental health, contribute to personal development, improve well-being and assist in social learning (e.g. tolerance, respect, cooperation, leadership, etc.). Participation may also assist in the improvement of educational performance and promote a sense of community belonging.

Quality parks and recreation opportunities also provide safe developmental opportunities for children and young people, build social skills and stimulate participation in community life. Recreation facilities are recognised as important physical assets that contribute to providing a social focus and influencing people’s perception of their community. Quality facilities facilitate broad community use, events, tourism and contribute to overall economic sustainability of the communities in which they exist. Therefore sport and recreation facilities contribute to physical health, mental health, community connectedness, general wellbeing and economic sustainability.

2. Strategic Alignment

The following section outlines the strategic context for this submission.

2.1 Council Plan 2013–2017 (Review 2014/15)

The Council Plan is a high-level aspirational document that sets the strategic direction for Council. The Council Plan identifies the strategic purpose of Council as being:

“Leading sustainable growth, strengthening our community and respecting our heritage”.

The Council Plan outlines four themes, supported by a range of strategic objectives and indicators that will be delivered over the four year term. The themes are:

- 1. Growth and Development.
- 2. People and Communities.
- 3. Destination and Economy.
- 4. Managing our Business.

Development of sport and recreation opportunities within the *Victoria Park Master Plan* will help Council achieve its desired outcomes in at least three of these themes as it is consistent with the following objectives outlined in the Council Plan:

Theme	Objective	Opportunity within the Master Plan
Growth and development	Planning for growth	Victoria Park is located relatively close to the emerging western growth area of the City. Improved provision of sport and recreation facilities will support opportunities for

Theme	Objective	Opportunity within the Master Plan
		increased physical activity participation, social connection and access to services.
	Managing our assets	Explore opportunities for asset refurbishment and renewal as part of the Master Plan, including playing fields and infrastructure that supports a range of formal and informal sport/recreation activities (e.g. road surfaces for cycling, pedestrian paths, shelter facilities, pavilion/change rooms, public toilets, reserve fencing, etc.).
	Improving transport options	Improve access to active and sustainable transport options including improvements to on-road and off-road path network, including to/from neighbouring schools.
People and communities	Encouraging connected communities	Support the ongoing development of sport and recreation facilities recognising their contribution to facilitating community connectedness, strength and resilience.
	Promoting healthy lifestyle	Support the development of a wide range of sport and recreation opportunities in order to help promote and facilitate improved personal health and wellbeing outcomes.
	Promoting accessibility and inclusion	Ensure the Master Plan considers opportunities to enhance accessibility and inclusion across all areas.
Destination and economy	Promoting our identity and brand	Consider opportunities for further enhancement of Victoria Park as a regional tourism destination, particularly for staging sport/recreation events and activities, e.g. cycling, archery, school sport carnivals, etc.

Table: Relationship to Council Plan

In addition to the overarching objectives outlined above, the Council Plan, which also integrates the previous *Municipal Public Health and Wellbeing Plan*, identifies five health and wellbeing domains that Council will focus on. These are:

1. Healthy, safe and inclusive communities;
2. Sustainable built and natural environments;
3. Culturally rich and vibrant communities;
4. Dynamic, resilient and local economies; and
5. Democratic and engaged communities.

Recreation activity and infrastructure have an important role to play in improving the health and wellbeing of all City of Ballarat residents.

The *Victoria Park Master Plan* will assist the City of Ballarat deliver its stated health and wellbeing domains, notably in the areas of healthy, safe and inclusive communities and sustainable built and natural environments, where key objectives include improved access to and utilisation of leisure and recreational facilities.

2.2 City of Ballarat Recreation Strategy 2014

Development of the *Victoria Park Master Plan* will also help achieve the objectives outlined in the City's Recreation Strategy, in particular:

- ▶ Increase participation in physical activity and recreation;
- ▶ Increase the opportunities for all people regardless of ability to participate in recreational pursuits in Ballarat;
- ▶ Provide diverse facilities for the people of Ballarat to participate in recreational activities;
- ▶ Provide recreational facilities that meet the changing needs of residents and the wider population;
- ▶ Provide facilities that will attract sporting and recreational events to the City;
- ▶ Match capital expenditure and facility spending with Ballarat recreation participation trends; and
- ▶ Inspire all members of the Ballarat community to realise the importance of physical activity and recreation.

3. Industry Sport and Recreation Trends

The *Victoria Park Master Plan* should consider and respond to the following general sport and recreation industry trends.

3.1 Recreation Trends

The Australian Sports Commission released a paper titled '*The Future of Australian Sport, Megatrends shaping the sport sector over coming decades*' in April 2013. The paper identified six megatrends that are likely to shape the sport sector over the next 30 years. Megatrends were described as important patterns of social, economic or environmental change. The megatrends identified are summarised below:

1. A Perfect Fit:

- ▶ A rise in personalised sport and fitness activities for individual health and fitness.

2. From Extreme to Mainstream:

- ▶ The rise of lifestyle, adventure and alternative sports – particularly popular with younger generations.

3. More Than Sport:

- ▶ Increasing recognition (by Government and stakeholders) of the broader benefits of sport, including mental and physical health and community wellbeing.

4. Everybody's Game:

- ▶ Evidence of Australians embracing sport participation into old age. Thereby highlighting the importance of providing participation opportunities for older adults and capturing the interests of all cultural groups in individual communities.

5. New Wealth, New Talent:

- ▶ Population and income growth, particularly within Asia, will create tougher competition and new business opportunities for Australians.

6. Tracksuits to Business Suits:

- ▶ Emergence of new market pressures and business models. This may result in pressure for community sport organisations to adopt more formal corporate structures and governance systems. The cost of participating in sport is also on the rise.

Further to the megatrends outlined above, the *Victoria Park Master Plan* will also need to consider the following relevant industry trends:

Participation Trends:

- ▶ Greater consideration will need to be given to opportunities to enhance informal recreation participation opportunities within the park as these account for the largest proportion of overall physical activity participation by the community including walking, cycling and running. This reinforces the importance of quality walking paths, trails and accessible open space facilities and programs.
- ▶ It can be expected that the use of parks and open space by personal trainers is likely to increase associated with a growing preference for 'pay as you go' activities and increasing recognition of the health benefits of regular physical activity participation. Infrastructure that supports group training and personal health and fitness within the park should be considered.
- ▶ Demand for organised sport opportunities, particularly for children aged 5–15 years and young adults aged 15–24 years, will remain significant (and growing), including soccer, football, cricket, netball, basketball and aerobic/fitness. The Master Plan should consider opportunities to enhance existing playing fields and support infrastructure, including the range of sports currently catered for.
- ▶ There is evidence of increasing women's participation in a range of sports, including AFL, AFL 9's, soccer and cricket. Appropriate facilities, i.e. playing fields and support infrastructure, including

change rooms, will need to be considered in order to encourage/support female participation.

Facilities and Infrastructure:

- ▶ Future facility and service provision will need to be cognisant of recent industry trends in terms of design, operation and open space development (e.g. maximising opportunities for multi-use, the development of 'service hubs', partnerships with developers and schools, establishment of a hierarchical approach to facility provision that is linked to defined service levels and asset management planning).
- ▶ Facility and infrastructure developments will need to consider an improved emphasis on quality, not just quantity of facilities.
- ▶ New and refurbished facility provision should consider opportunities to support social gathering spaces, multi-use and incorporating a high degree of environmental sustainability in design, development and operation.
- ▶ Review and upgrade (where required) linear connections to/from Victoria Park and key internal destinations as a high priority.
- ▶ There is growing use and acceptance of synthetic sport surfaces for a variety of sports. These are able to accommodate higher hours of use compared to natural turf surfaces, which can help reduce overall demand for active open space, however such facilities may require different management approaches from Council to maximise use and sustainability. Consideration could be given to possible development of multi-use synthetic sport surfaces in Victoria Park, potentially in partnership with neighboring schools.
- ▶ There is growing pressure for year-round access to playing fields and facilities for a variety of sports, including soccer and AFL (i.e. AFL 9's in summer).
- ▶ Facility developments need to consider designs that maximise multi-use opportunities and overall resource efficiencies.
- ▶ Encourage the development of infrastructure and facilities that support informal recreation and community gathering, particularly targeting children, families and young people.

4. Summary of Consultation Outcomes

The following section summarises key results from the recent consultation activities, i.e. telephone interviews conducted in May 2015, and key comments from the *2012 Visioning Interviews* which remain relevant for consideration in the current Master Plan. Appendix 1 and 2 respectively provide a more comprehensive record of consultation notes from these activities.

Club / Group	Summary of key comments or requests	Implications / Considerations for the Master Plan
Ballarat Adult Riding Club	<ul style="list-style-type: none"> ▶ Different rules between pony and adult riding clubs means that the dressage arenas are not approved for adult riding competition. ▶ Equestrian riding outside of the designated area is desirable, e.g. a bridle trail (similar Hyde Park, London or Centennial Park, Sydney) ▶ Desire to upgrade the existing club rooms which date back to the 1950's, in particular toilet facilities and urgent maintenance needs (e.g. roofing). 	<ul style="list-style-type: none"> ▶ Investigate opportunities for an additional dressage arena within the BARC grounds. ▶ Investigate opportunities for a bridle trail within Victoria Park. ▶ Assess existing club rooms and identify improvement priorities, including public toilets and showers.
Ballarat Association Schools	<ul style="list-style-type: none"> ▶ Continue to use cricket and soccer grounds. Need additional soccer goals. ▶ Develop shelter and spectator viewing facilities alongside playing fields. ▶ Additional public toilets. ▶ Improved access and drop off area for large buses. ▶ Streamlined booking process for use of facilities. ▶ Development of two multi-use / multi-sport playing fields, serviced by adequate amenities, pavilion facilities. ▶ Consider options for development partnership with neighbouring schools. 	<ul style="list-style-type: none"> ▶ Additional permanent soccer ground / goals. ▶ Establish spectator shelter and viewing areas to service playing fields. ▶ Additional public toilets and amenities. ▶ Explore options for additional multi-use/sport playing fields, serviced by appropriate amenities. Possible partnership with schools and home base for BAS. ▶ Improve bus access, egress, parking and drop off zone. ▶ Improve Council booking processes.
Ballarat Bicycle Users Group	<ul style="list-style-type: none"> ▶ More amenities (i.e. public toilet block) needed to compliment park use. ▶ In 2012 trees were identified as being in poor condition and club suggested the need for a tree replacement program. ▶ Victoria Park is a major open space destination and should remain largely undeveloped. ▶ Consider an extra path across the park (i.e. shorter circuit/avoidance of pine tree areas). ▶ Small café/coffee cart near the main play area/toilet area. 	<ul style="list-style-type: none"> ▶ Review the pedestrian and shared path network within the park. ▶ Review the health and condition of existing trees, establish a tree replacement / planting program. ▶ Establish additional public amenities.
Ballarat Cricket Association (BCA)	<ul style="list-style-type: none"> ▶ The BCA indicated that club membership is continuing to increase and that Victoria Park is a highly used venue for cricket. All 11 grounds are currently in use for Saturday morning games and use of the reserve for cricket is likely to expand in the future. 	<ul style="list-style-type: none"> ▶ Upgrade at least one ground as a 'feature ground' for events and higher profile games. ▶ Explore spatial options to establish additional playing fields, potentially an additional

Club / Group	Summary of key comments or requests	Implications / Considerations for the Master Plan
	<ul style="list-style-type: none"> ▶ Desire to upgrade at least one ground as a 'feature ground' to support Lucas Cricket Club and cricket events. ▶ The park has potential to accommodate a further three cricket grounds. ▶ Consider fencing oval #11 and then establish an additional ground at this site. ▶ Increase water supply for playing field irrigation. 	<p>three ovals.</p> <ul style="list-style-type: none"> ▶ Consider fencing Oval 11 to better define this site and to allow establishment of another oval. ▶ Consider opportunities to improve playing field surfaces, particularly irrigation.
Ballarat Dog Obedience Club	<ul style="list-style-type: none"> ▶ Require extra room for indoor training, doubled storage space, and an outdoor shelter area are the top priorities for any clubroom redevelopment. ▶ The club would ideally like to have a separate clubroom facility due to concerns over sharing facilities and compatibility of uses. ▶ Would like to establish an enclosed dog park within the reserve. 	<ul style="list-style-type: none"> ▶ Upgrade the existing 'soccer' pavilion to address the needs of the dog club, or consider opportunities to accommodate dog club facility needs within a new building (potentially associated with the possible relocation of the showgrounds). ▶ Explore site opportunities to establish a fenced dog park within the reserve.
Ballarat Environment Network (BEN)	<ul style="list-style-type: none"> ▶ Sport should not be played in the park and buildings and fenced areas should not be permitted. ▶ Pine trees should be reviewed and all trees should be inspected regularly. ▶ Native vegetation within the southern area of the park should be protected. ▶ Removal of the lake-weed dump from the south west corner is needed. ▶ Crown reservation of the park land needs to be honoured. ▶ Flora and fauna improvements recommended. 	<ul style="list-style-type: none"> ▶ Assessment of the integrity/quality of existing trees within the park should be conducted with a <i>Tree Management and Planting Plan</i> established. ▶ Identify and protect areas of flora/fauna significance within the park, having regard to the ongoing mixed use of the site.
Ballarat Fly Fishers	<ul style="list-style-type: none"> ▶ Would like a new casting facility established for use by the club and visitors to the region. ▶ Need to improve maintenance of the ponds (i.e. removal of fallen sticks and limbs). ▶ Improved maintenance of the roads within the park needed (especially in relation to potholes) and safety needs to be increased with better traffic management, especially for events. ▶ Continue to improve the park, however should be best left 'under developed'. 	<ul style="list-style-type: none"> ▶ Identify preferred location and design for a future casting facility. ▶ Upgrade road surfaces and traffic management measures throughout the park.
Ballarat Football League	<ul style="list-style-type: none"> ▶ Lack of goals posts prevents league use. ▶ Lack of training lights also limits options 	<ul style="list-style-type: none"> ▶ Consider opportunities to install goal posts at selected ovals to allow Aussie Rules football use

Club / Group	Summary of key comments or requests	Implications / Considerations for the Master Plan
	<p>for use.</p> <ul style="list-style-type: none"> ▶ Lack of public toilet facilities is also an issue. 	<p>having regard to minimum size requirements (also refer to desire for establishment of multi-use ovals to address school use needs).</p> <ul style="list-style-type: none"> ▶ Consider opportunities for establishment of training lights at selected multi-use ovals. ▶ Identify suitable location(s) for new public toilet facilities within the park.
Ballarat High School	<ul style="list-style-type: none"> ▶ The park has a poor reputation for safety and attracts undesirable behaviour, the school has concerns about student behaviour in this area. ▶ If grounds were irrigated then they could be more easily used for school sports and activities. ▶ Consider netball courts; fitness stations along paths; more facilities near the ponds and a venue for concerts and events (e.g. rotunda). ▶ If the size of the ponds were increased they could be used for some outdoor education sports. 	<ul style="list-style-type: none"> ▶ Create improved safety through increased activation of the park and design modifications. ▶ Investigate installation of irrigation on selected ovals. ▶ Consider installation of netball courts, fitness stations and small scale concert/event venue to encourage broader multi-use options for schools and the community. ▶ Consider options to upgrade the ponds and/or facilities to support use of the reserve for outdoor education (although this function is already well serviced by Lake Wendouree).
Ballarat Pony Club & Friends of Ballarat Eventing Association	<ul style="list-style-type: none"> ▶ BPC grounds are heavily used and bring many participants and visitors into the park. ▶ Maintenance is conducted solely by the BPC, at considerable cost to the club. ▶ Clubrooms were built in the 1950's and are now in need of significant upgrades, and are also inadequate in size for the BPC/FBEA's current and future needs. ▶ Managing manure and rubbish disposable is a significant cost for the club. ▶ The fence surrounding the BPC's grounds requires replacement within the next few years. ▶ Parking for large events is an issue, limiting the size and scope of the club's two major events. Parking within the former saleyards area may help alleviate this issue. ▶ The BPC/FBEA indicated that the possibility of the Agricultural Society relocating to the current saleyard site presents an opportunity for both organisations in terms 	<ul style="list-style-type: none"> ▶ Investigate options to upgrade/replace the existing clubrooms (consider shared use options e.g. dog obedience, archery club, cycling club, showgrounds, agricultural society, etc.). ▶ Upgrade / replace fencing surrounding the BPC grounds. ▶ Investigate spatial options and feasibility of accommodating the Wendouree Archery Club within the BPC grounds and share facilities (i.e. new pavilion and indoor facilities). ▶ Explore options to increase parking provision or temporary event parking arrangements within close proximity to the Equestrian Centre grounds.

Club / Group	Summary of key comments or requests	Implications / Considerations for the Master Plan
	<p>of facility sharing.</p> <ul style="list-style-type: none"> ▶ The club sees increasing the number of external groups using the Equestrian Centre as an opportunity and have identified in particular that this could include the Archery Club and/or a gardening group. ▶ They have also indicated that they are happy for the general public to use their grounds (with mutual respect and consideration of safety concerns). 	
Ballarat Race Walkers	<ul style="list-style-type: none"> ▶ The club does not currently conduct events in Victoria Park due to road / traffic management requirements, however major competitions had been held in the past. ▶ Have identified that a good quality smooth and sealed surface near the toilets that is 1km in length is desirable but would require exclusive use of this space for two hours maximum per month but that this could increase if championships were held. ▶ General walking and casual training is popular in Victoria Park. 	<ul style="list-style-type: none"> ▶ Incorporate infrastructure that allows effective and efficient traffic management / road closures for events within the park (e.g. removable bollards, signage, etc). ▶ Improvement of path network within the park for walking and casual training purposes.
Ballarat Regional Athletics Centre	<ul style="list-style-type: none"> ▶ Insufficient general park lighting increases personal safety concerns and risk of injury for joggers. ▶ If the park was to be developed into a sporting hub an athletics track would be a fantastic addition. ▶ Additional car parking may be needed if larger events are to be held in the park. 	<ul style="list-style-type: none"> ▶ Review existing lighting provision, consider options to improve lighting of the running track/path network. ▶ Consider options to incorporate an athletics track within the park, potentially as part of any multi-use oval development in partnership with local schools.
Ballarat Sebastopol Cycling Club	<ul style="list-style-type: none"> ▶ Club identifies significant concerns with their use of the current facilities, in particular the poor condition of existing road surfaces, shoulders and traffic management during events. ▶ There is a need to upgrade road surfaces to establish an effective criterium circuit. Additional support facilities are also needed, including: <ul style="list-style-type: none"> ▶ Amenities block (near Eyre Street entry into park) and car park facility. ▶ Retractable bollards to control traffic entry on Eyre Street. ▶ Redesign of the Poplar Avenue/Cedar Drive/Quercus Avenue intersection to allow unimpeded through traffic on Cedar drive during events (immediate priority). 	<ul style="list-style-type: none"> ▶ Upgrade road surfaces and installation of support infrastructure as listed. ▶ Consider options to relocate the off-lead dog area away from the criterium track (and/or establish a fenced dog park).

Club / Group	Summary of key comments or requests	Implications / Considerations for the Master Plan
	<ul style="list-style-type: none"> ▶ Off lead dog area to be moved away from centre of circuit (immediate priority). ▶ Establish a BMX / mountain bike training facility to reinforce Vic Park as the home of cycling in Ballarat. ▶ Trail head facilities for cyclers and runners. 	
Ballarat Triathlon Club	<ul style="list-style-type: none"> ▶ The club has not used any facilities at Victoria Park for the last couple of years due to various constraints including significant issues with the road circuits; road closures and required repeat application process. 	<ul style="list-style-type: none"> ▶ Upgrade facilities for cycling events (as listed above). ▶ Review Council booking system and permit requirements.
Eureka Orienteers	<ul style="list-style-type: none"> ▶ Some of the orienteering markers within the park have been vandalised, would like to see a Council agreement in relation to maintenance. ▶ Keep the park open and accessible—do not close it off to clubs. ▶ Access to the park for schools is important. ▶ Improvements to certain areas of the park may provide more points for markers (equestrian area, pine plantation, sheepyards, saleyards etc.) ▶ Could expand Victoria Park into the saleyards area. ▶ Area of the old velodrome needs to be resolved. ▶ Are the extent of roads within the park necessary or could through roads and access be limited with less entry and exit points. 	<ul style="list-style-type: none"> ▶ Upgrade / repair markers and signage as required. ▶ Investigate opportunities for the former velodrome area. ▶ Investigate opportunities to integrate the disused saleyards into the Victoria Park precinct ▶ Investigate the current road network within the park and feasibility of possible rationalisation.
Loreto College	<ul style="list-style-type: none"> ▶ The need to make prior arrangements for use of the park with Council makes on the spot decisions to use the park difficult. ▶ The grounds are in poor condition, there is no shelter and the toilets are not used by the college. ▶ If Oval 1 could be marked with distances for running it would be very useful for the College. ▶ Opportunity for College to negotiate an agreement with Council to maintain the oval and use during school hours which would create a better quality playing field for the community at other times. ▶ Park should be safer, e.g. close gates at 	<ul style="list-style-type: none"> ▶ Review Council booking process for the grounds. ▶ Review overall path network, include provision of distance markers around Oval 1. ▶ Provide interpretive information within the park. ▶ Improve the standard and condition of playing surfaces. ▶ Consider opportunities for joint-use agreements with local schools to develop and maintain facilities. ▶ Further opportunities as listed

Club / Group	Summary of key comments or requests	Implications / Considerations for the Master Plan
	<p>night, and make road crossings in the park safer.</p> <ul style="list-style-type: none"> ▶ More seats and clean and safe toilets needed. ▶ Improve the connection between the park and Lake Wendouree. ▶ Provision of interpretive information about the park history and plantings is desirable. ▶ Year 10 community service program could use the park for their activities if it was safe and well signed. 	<p>for Ballarat Association Schools, of which Loreto College is a member.</p>
Lucas Cricket Club	<ul style="list-style-type: none"> ▶ Main issue relates to poor quality of playing surfaces. 	<ul style="list-style-type: none"> ▶ Upgrade the condition of playing surfaces, e.g. irrigation.
Sport Climbing Victoria	<ul style="list-style-type: none"> ▶ Sport Climbing Victoria would like to develop an outdoor climbing facility to International standard (wall height of between 18–20 metres high) which would require a footprint of approximately 1500sqm based on similar facilities. ▶ Facility would require fencing and access to amenity facilities such as toilets/change rooms. 	<ul style="list-style-type: none"> ▶ Consider opportunities to accommodate an outdoor climbing wall within the park, including shared use of toilets / change room facilities (note: likely to require more detailed feasibility assessment, including demand analysis and risk management plan).
St Patrick's School	<ul style="list-style-type: none"> ▶ Access to Vic Park for school use is highly valued. ▶ Consider opportunities for joint use / development of appropriate facilities, including multi-use ovals and pavilion/change rooms. ▶ Improve the condition of existing playing fields and support infrastructure. 	<ul style="list-style-type: none"> ▶ Establish 2–3 new multi-use sports ovals for shared school/community use (or upgrade existing ovals to increase multi-use options, e.g. rugby, soccer, football and cricket). ▶ Improve oval drainage, irrigation and general maintenance. ▶ Develop additional change rooms, toilet block and shelter facilities.
Urquhart Park Primary School	<ul style="list-style-type: none"> ▶ Barriers to increased usage of the site (for various activities) include: <ul style="list-style-type: none"> ▶ Getting Council permission to use site is difficult. ▶ Shortage of toilets makes it hard, particularly for younger students. ▶ Oval is in poor condition and not suitable for PE classes. 	<ul style="list-style-type: none"> ▶ Develop a more user friendly booking process for the grounds. ▶ Identify site for additional public toilets and shelter facilities to service ovals. ▶ Upgrade oval playing surfaces and general condition.
Victoria Park Soccer Club	<ul style="list-style-type: none"> ▶ Sharing with schools is still a major difficulty for the club resulting in overuse of grounds. ▶ It is considered that a minimum of four (4) (or ideally six (6)) change room facilities 	<ul style="list-style-type: none"> ▶ Upgrade playing surfaces including drainage, irrigation and maintenance. ▶ Upgrade / expand club rooms and amenities, including adequate

Club / Group	Summary of key comments or requests	Implications / Considerations for the Master Plan
	<p>would be needed as part of any redevelopment (particularly to cater for females).</p> <ul style="list-style-type: none"> ▶ Lighting, adequate space and lack of shelter present issues for the club. ▶ Poor condition of the playing ovals during winter frequently causes games to be cancelled. 	<p>provision for females (i.e. 4–6 change rooms needed).</p> <ul style="list-style-type: none"> ▶ Install training lights to at least one field. ▶ Install spectator shelter facilities.
Wendouree Archery Club	<ul style="list-style-type: none"> ▶ The club is facing significant constraints at their current site. ▶ Club wants to be based in Victoria Park and have identified the corner site on Gillies/Winter Street in the south-west corner of the park as their preferred location and has been in discussions with Council in regards to relocation to this site since 2009. The dimensions proposed are 300 metres north/south and 220 metres east/west incorporating an indoor facility approximately 50 metres by 25 metres. ▶ The outdoor range would require fencing along two sides as a minimum (i.e. street frontages), and vehicle barrier fencing along other sides. 	<ul style="list-style-type: none"> ▶ Investigate opportunities to accommodate the Archery Club within Victoria Park, including possible shared use with other users/facilities e.g. BPC/FBEA site, Saleyards site, etc.

Appendix A. 2015 Stakeholder Summary Update

This stakeholder summary provides an update to the consultation results recorded in 2012 by Sharon Sykes within the Victoria Park Visioning Stakeholder Interviews which included the outcomes of discussions with a range of users, organisations and stakeholders. The summary includes information discussed as part of phone consultations held in May 2015 and written correspondence. The following stakeholders were consulted as part of this process:

▶ Ballarat Association Schools	▶ Ballarat Sebastopol Cycling Club
▶ Ballarat Cricket Association	▶ Ballarat Triathlon Club
▶ Ballarat Dog Obedience Club	▶ Lucas Cricket Club
▶ Ballarat Fly Fishers	▶ Sport Climbing Victoria
▶ Ballarat Football League	▶ St Patrick’s School
▶ Ballarat Pony Club & Friends of Ballarat Eventing Association	▶ Victoria Park Soccer Club
▶ Ballarat Regional Athletics Centre	▶ Wendouree Archery Club

Name of Club / Organisation	Ballarat Association Schools
Facilities Used	Ballarat Association Schools (BAS) currently use the sporting fields and soccer grounds.
Challenges / Issues	Access to adequate amenities closer to the grounds being utilised. Lack of under-cover shelter facilities. Lack of soccer goals. Access for large buses including ease of drop off for transporting students. BAS would like to see a streamlined booking process for the facilities at the park to ensure efficient and maximum use of the grounds can occur. Currently bulk bookings can be made of the whole venue which leaves grounds unutilised as they cannot be booked by others during these periods.
Opportunities for Victoria Park	Development of additional multi-use sporting fields and additional change rooms/amenities and shelter facility. Could be an option for partnership with near-by schools to develop facilities and create a home base for BAS.

Name of Club / Organisation	Ballarat Cricket Association
Membership Information	As an update to the 2012 membership information, the Ballarat Cricket Association (BCA) now has 45 junior teams and has indicated they will be implementing a separate junior girls' competition from the 2015/16 season.
Facilities Used	There have been no changes to the facilities used by the BCA since the consultations conducted in 2012.
Challenges / Issues	In addition to the issues raised during the 2012 consultations the BCA have also indicated they would like to advocate for a "Show ground or Feature Ground" within the park. They see this as being able to support the Lucas CC and also to support events held at the precinct.
Opportunities for Victoria Park	The BCA still sees the same opportunities for the park with the addition that they also consider it a highly used venue for cricket and can only see this expanding in the future.

Name of Club / Organisation	Ballarat Dog Obedience Club
Membership Information	Increased membership has occurred with the club currently at 730 members with this predicted to reach 800 members by the end of the financial year. 150 of these members are ongoing every year. Around 10% of these are juniors. Members tend to be predominantly 50+ year olds.
Facilities Used	The facilities used by the club remain unchanged from the 2012 consultations, i.e. predominately Ovals 6, 7 & 8 and shared use of the soccer pavilion.
Challenges / Issues	<p>Storage facilities are an issue for the club, with a trailer of equipment currently required to be kept at a member's home.</p> <p>In 2012 the club was concerned that the proposed development of a large shared hall with partitioned areas would make it difficult to have their own area, and questioned how their particular use (with dog and puppy training occurring inside) would affect other users. They were also concerned that the new facility did not have kitchen facilities (only a canteen). These concerns are still considered relevant to any new proposed multi use facility.</p> <p>The club raises limited revenue which covers general running expenses only and is concerned with their financial ability to service any new development.</p> <p>The club has previously made a proposal to Council which included a 'staged development' which would see the size of their storage area doubled and a sheltered area for training created.</p> <p>Extra room for indoor training, doubled storage space, and an outdoor shelter area are the top priorities for any clubroom redevelopment and the club would ideally like to have a separate clubroom facility.</p>

Name of Club / Organisation	Ballarat Dog Obedience Club
Opportunities for Victoria Park	<p>The opportunities that this club identified for the site remain largely unchanged with the only addition being that the old velodrome area referenced is believed to now be included in the proposed showgrounds area. While a fenced area for dogs is still desirable, the club indicated that this may be developed at Victoria Park or another suitable site.</p> <p>Roads were also considered to need upgrading.</p>

Name of Club / Organisation	Ballarat Fly Fishers
Membership Information	Club membership is considered to be relatively static, with the club still comprising 150 members with approximately 5% of these junior members. It is still considered that the site is utilised by many non-members on a recreational basis, fishing participation is high when the dams are stocked.
Facilities Used	<p>Fly Fishing members would use the ponds 2–3 times per week and have been doing so for the past 2–3 years. Members also use the casting jetty at Lake Wendouree.</p> <p>Spring through to summer experience the highest usage as the dams are well stocked during this period, however small fish do get fished out at other times.</p>
Challenges / Issues	The issues raised by the club in 2012 are still considered to be relevant with a new casting facility in particular being an idea that has been under consideration by the club for some time. Plans for a facility and associated competition at Lake Wendouree were submitted to Council but were not wholly backed by the club at the time due to potential visual amenity impacts on the community with Victoria Park still considered a more suitable facility for this to occur. It is believed that this facility would be used by the club as well as numerous other organisations. Additionally in areas where these types of facilities currently exist big competitions are able to be held, so development of this type of facility at Victoria Park could be a good opportunity to draw visitors into the Ballarat region.
Opportunities for Victoria Park	<p>Opportunities for the park identified in 2012 are still considered to be relevant by the club, with the exception of the maintenance improvements. Removal of sticks and limbs (fallen from adjacent trees) is considered to replace the removal of weeds as the primary maintenance needed on the ponds, with improved maintenance of the roads within the park also needed (especially in relation to potholes).</p> <p>In general the club are happy with their use of the park, with their main concern being able to continue their use of the ponds into the future, and would like to see the general ambience of the park maintained or improved, as appropriate.</p>

Name of Club / Organisation	Ballarat Football League
Membership Information	Membership has continued to increase since 2012, including female participation.
Facilities Used	<p>BFL clubs do not have any requirement for formal use of existing ovals for regular matches at this stage. Use is limited to pre-season training, particularly Ovals 1, 2 & 3 as well as the mullock heap and path networks.</p> <p>Vic Park may be used for school football.</p> <p>Emerging use includes:</p> <ul style="list-style-type: none"> ▶ A social competition, AFL 9's, is now held at the site (Dec through March). ▶ A competition is also run for Ballarat primary schools which sees 13 mini grounds set up one site and has over 60 school sides in attendance from the region.
Challenges / Issues	<p>No goals posts in the park is still considered to be the primary issue to increasing the leagues' usage of the site. Lack of training lights prevents use in season.</p> <p>Lack of public toilet facilities within the park is also an issue.</p>
Opportunities for Victoria Park	If goal posts were installed at several ovals leagues use of the park would increase, which would relieve some of the pressure experienced at other reserves.

Name of Club / Organisation	Ballarat Pony Club & Friends of Ballarat Eventing Association
Membership Information	<p>Ballarat Pony Club (BPC) currently has 75 riding members (age 5–25) with no cap on membership and newcomers welcome. Members are primarily female, aged between 5 and 25 years old.</p> <p>Membership distribution encompasses Maryborough, Ballan, Beaufort, Skipton, Smythesdale, Meredith, and Mt Mercer.</p> <p>In addition there are approximately 80 private key holders who use the grounds for individual training and instruction purposes.</p> <p>The Friends of Ballarat Pony Club is now known as Friends of Ballarat Eventing Association (FBEA) and continues as the Pony Club's fundraising arm for infrastructure maintenance and improvement. They have 16 members.</p>
Facilities Used	<p>Lease arrangements are currently being finalised with DEWLPI / City of Ballarat.</p> <p>BPC continue to maintain the 43 acres of the Victoria Park Equestrian Precinct.</p> <p>11 rallies and four (4) major events are conducted each year by</p>

Name of Club / Organisation	Ballarat Pony Club & Friends of Ballarat Eventing Association
	<p>the club, two of which are two days in duration.</p> <p>In association with FBEA there are an additional two (2) major events (a three day and a two day) and approximately five training weekends. In total these attract approximately 7000 people to the grounds.</p> <p>Other regular users of the BPC facilities are: the Ballarat Adult Riders (who use the facility with 12 rallies and one event a year); Western Victorian Dressage, Western District Arabian Group, the Palomino Group, Beaufort Adult Riders, and the Pony Breed Society. In conjunction with the weekly users of the grounds these events bring in another 5000 people to the grounds.</p> <p>In total there are approximately 12000 people who come to the grounds each year (up from 3500 in 2012). This increased attendance reflects the fact that the calibre of BPC's facilities is now among the best in Victoria. This is through the hard work of the two committees dedicated to ensuring that the grounds of the Victoria Park Equestrian Centre are constantly maintained and improved. BPC attracts more competitors and spectators to each of our events, and more external equestrian groups to our grounds due to their excellent reputation as a highly desirable equestrian destination.</p> <p>The VET course no longer uses the BPC grounds.</p>
Challenges / Issues	<p>The BPC/FBEA place a high value on the grounds that they occupy recognising the beauty of the landscape and the advantage that such a large area offers the Club, and regularly utilise the 43 acres occupied to the fullest extent.</p> <p>However the economic cost of managing such a large site, and hosting so many events to fund the management costs, is difficult for the club.</p> <p>Mowing and the broad acre spraying of weeds is contracted out by the BPC/FBEA and club volunteers dedicate approximately 3000 hours a year to ensuring the grounds are maintained. This volunteering is done both at fundraising events (to raise the funds needed to hire contractors), and onsite to manage the grounds and infrastructure including extensive gardening and general maintenance tasks to improve the amenity of the grounds.</p> <p>The BPC/FBEA have successfully been working in partnership with Youth Justice to assist with maintenance tasks. Since 2012 BPC/FBEA have conducted extensive site improvements including: building horse yards; installing a horse wash; building a third all weather arena; upgrading their water distribution system; starting the urgent work on electricity to the Clubrooms; repainting the clubrooms inside and out; providing safe access to the club rooms for pedestrians; planting approximately 50 trees; constructing nearly 100 new cross country jumps to enable the running of an international level event; and hosting two international three day events. They are currently working on building a tiny tot's area for younger riders.</p> <p>The BPC/FBEA consider the clubhouse to be their urgent challenge as it was built in the early 1950's, and they have outgrown the space. The electricity is in urgent need of upgrade, and the toilet area is no longer adequate. The external plumbing is in</p>

Name of Club / Organisation	Ballarat Pony Club & Friends of Ballarat Eventing Association
	<p>need of replacement and the roof and roof plumbing is in urgent need of repair as the roof is separating from the joists, and the down pipes are broken and dilapidated.</p> <p>The BPC/FBEA are keen to investigate economically viable ways of managing manure and rubbish disposal as the costs are a large imposition on their tight budget.</p> <p>The fence surrounding the Pony Club grounds is at the end of its life. It is visually unappealing, and is starting to deteriorate to the point of not providing an adequate barrier to the horses which is a safety concern. A new fence will be needed within a few years and as this is a larger cost item the club would like to begin discussions sooner rather than later regarding its replacement.</p> <p>The Club expressed that they have been very grateful over the past two years for the assistance of Council in the mutually beneficial system of disposing of clean fill within the grounds that has allowed them to improve their infrastructure and help with some difficult drainage issues.</p> <p>BPC/FBEA also acknowledge that Council has also been valuable in helping secure the safety of two vital trees in the clubroom area, disposing of a dangerous dead tree, and uplifting the pine trees whose lower boughs posed a dangerous threat to riders and horses. The club would appreciate continued assistance with their tree planting and maintenance process.</p> <p>Adequate parking (of equestrian vehicles) for their large events is still an ongoing issue and limits the size and scope of their two major events. They hope that the new plans for the saleyard area may help to alleviate this issue.</p>
Opportunities for Victoria Park	<p>From the Club perspective they see the possibility of the Agricultural Society relocating to the current saleyard site as a huge opportunity for both organisations. The synergy of utilising existing infrastructure for both livestock and horses, and providing new amenities (such as toilets and showers) that are utilised by both groups provides a powerful economic argument for designing the new site with consideration to the ease of access between the two areas. The BPC/FBEA expressed that they look forward to being able to contribute to those discussions.</p> <p>The other opportunity that they see for the Club is to increase the number of external groups using the Equestrian Centre. They have identified, for example, that they could investigate ways to liaise with the Archery Club that is keen to move in to the park, or that there might be a gardening group that would like some space (and some manure). They have indicated that they are open for discussion with any interested group.</p> <p>They have also indicated that they are happy for people to wander through their grounds and that the fencing is there to keep horses in, not people out.</p> <p>BPC/FBEA feels privileged to be part of Victoria Park, and are grateful to be able to be stewards of the beautiful grounds that they care for. They feel that they contribute back to the Park by ensuring their grounds are beautifully maintained and presented thereby adding to the amenity of Victoria Park.</p>

Name of Club / Organisation	Ballarat Regional Athletics Centre
Membership Information	The Ballarat Regional Athletic Centre (BRAC) comprises four local athletics clubs of the Ballarat Region. BRAC provides graded competition for U/14 to Veteran 50+ age groups over the Summer and Winter seasons. The Track and Field season typically has approximately 250 members and the Cross Country season has approximately 150 members.
Facilities Used	Victoria Park is one of the main facilities/areas where training and competition are conducted by Ballarat Athletes, with Llanberris Reserve, Ballarat Grammar, Lake Wendouree, Lake Esmond, Desoza Park and various tracks and trails around the city also being used.
Challenges / Issues	The main issue for training is insufficient lighting which is the same as Lake Wendouree, insufficient lighting causes issues such as risk to personal safety and risk of injury.
Opportunities for Victoria Park	<p>Vic Park is such a beautiful area with so much potential. In terms of athletics, the events that could be held there are endless. There are tracks for Cross Country races and road races.</p> <p>If the park was to be developed into a sporting or facility hub an athletics track would be a fantastic addition. The numbers using Llanberris over the warmer months have risen too high and the track is overloaded during this time.</p> <p>It would be great to see the area used year round.</p>

Name of Club / Organisation	Ballarat Sebastopol Cycling Club
Membership Information	Membership information is still considered accurate, i.e. approximately 250 members.
Facilities Used	<p>The club still utilises south eastern section of Victoria Park for criterium racing.</p> <p>Racing now takes place from 6pm on Wednesdays during the summer season with three grades of racing held concurrently for approximately one hour duration.</p> <p>40-50 cyclists usually participate in weekly club races. The majority of club competitors (95-99%) ride to/from the course.</p> <p>The type of racing that this road course provides is growing in popularity as it takes participants off busy roads and provides exciting and close spectator friendly racing.</p>
Challenges / Issues	<p>Although the current road course within Victoria Park is considered to be ideal in location and design it is in poor condition with a rough, pot holed and pitted surface and uneven gravelly shoulder combined with poor water shedding and drainage. Course surface best described as quite dangerous.</p> <p>Other concerns include capacity for effective traffic management during events; general vehicle movement throughout the park and the location of the 'off lead' dog area in the middle of the</p>

Name of Club / Organisation	Ballarat Sebastopol Cycling Club
	<p>circuit.</p> <p>Lack of toilet/change facilities further inhibit the clubs ability to promote a junior and women’s programme and hinder the likelihood of larger scale state events on this circuit.</p>
Opportunities for Victoria Park	<p>The opportunities identified are still considered relevant with the club considering that the track is not currently up to standard and if it was improved it would create significant opportunities for the club including holding State and Championships.</p> <p>The club considers that the development of a high grade/high standard criterium circuit track utilising the current roads coupled with a minimum amount of physical infrastructure would support increased use of the reserve for club and informal community use.</p> <p>Ideally (i.e. long-term) a criterium circuit fully separated from road traffic is considered desirable. However the club acknowledge it is more realistic to upgrade existing roads within the park, along with infrastructure to support traffic management and safety during events is a more achievable option.</p> <p>An improved track is expected to:</p> <ul style="list-style-type: none">▶ Increase participation levels of children and women who find the current course conditions intimidating and dangerous, and are impacted by the lack of nearby toilet and change facilities;▶ Provide the opportunity for year round racing;▶ Enable the circuit to shed water resulting in less weather related cancellations and longer competition season;▶ Enable schools and youth programs to be developed;▶ Provide a realistic opportunity to attract regional, state and national criterium events;▶ Attract triathlon clubs for duathlon events; and general cycling training for a variety of groups;▶ Enable the opportunity to develop Cyclo-cross; and attract other cycling disciplines such as BMX and mountain biking as a training facility with the opportunity to develop an adjoining skills park area. <p>Envisioned works for the development would include:</p> <ul style="list-style-type: none">▶ Amenities block (near Eyre Street entry into park) and car park facility;▶ Retractable bollards to control traffic entry on Eyre Street;▶ Redesign of the Poplar Avenue/Cedar Drive/Quercus Avenue intersection to allow unimpeded through traffic on Cedar drive during events (immediate priority).▶ Off lead dog area to be moved away from centre of circuit (immediate priority). <p>Hot mixing the existing road or at the very least repairing the existing pot holes, fissures and rough edges is also seen as an immediate priority.</p> <p>Letters of support for the Club’s proposed development also provide the following comments:</p> <ul style="list-style-type: none">▶ Ballarat is an epicentre for cycling in Victoria (Cycling Victoria);

Name of Club / Organisation	Lucas Cricket Club
Membership Information	Club has used the park for approximately 50 years and currently has three (3) senior teams with a total of 40 registered members.
Facilities Used	<p>Club currently use the clubrooms, the two ovals and nets in front of the clubrooms, and additionally some other ovals on site (on occasion) at the discretion of the Ballarat Cricket Association.</p> <p>The Clubs season and use of the site extends from September to March/April for training on Tuesday and Thursday nights and games on Saturdays (and some Sundays).</p>
Challenges / Issues	The club currently does not have a lot of issues with the site, however have stated that the grass dries out quickly but is generally maintained pretty well.
Opportunities for Victoria Park	Rejuvenation of the park might attract more interest for people to play sport there.

Name of Club / Organisation	Sport Climbing Victoria
Membership Information	<p>There is currently a small club in Ballarat (Western Victoria Climbing Club Inc.) which currently has 100 members and is in need of a new home facility. Growth is limited by the facilities they have available to them which is currently only the use of the gym at Ballarat Secondary College's Barkly St. Campus one night per week. This club is currently recreational climbing only and does not compete in competition climbing.</p> <p>The sport in general is currently experiencing significant growth; is designated as a future Olympic sport; and is currently a Youth Olympics and Paralympics event.</p>
Facilities Used	There is currently no outdoor climbing facility to international standard available within Australia. International standard for the wall height of outdoor climbing facilities is between 18–20 metres high, with most facilities currently within Australia between 13 and 15 metres high (with some as low as 11 metres). An international standard climbing facility would not require an overly large footprint size within the park as height is the

Name of Club / Organisation	Sport Climbing Victoria
	<p>main requirement.</p> <p>There is currently a similar facility to what is desired for Victoria Park in Noumea which has a 1500sqm footprint with a neighbouring soccer field used as a spectator area when international competitions are held. The local population of this area is very similar to Ballarat (at 76,000) and they now have a very strong climbing club due to the development of this wall which also attracts international competitions.</p> <p>The same style of wall as that in Noumea has also been built in Canada and has a shell around the outside to offer protection in winter (and can be opened in summer), which offers year round use of the site.</p>
Challenges / Issues	<p>The facility would not be available to the public on a 24/7 basis but rather would be part of a recreational facility that would be fenced, have certain operational hours, and available to members only (a pass to climb/safety check would be required). Barriers to becoming a member would be limited, with only a small membership fee (currently \$35), but would require members to have safety training for use of the site thereby reducing the public risk management required as the club has public liability insurance that covers all members.</p> <p>Provision of toilets/change rooms would be required and location next to existing facilities to maximise shared use would be ideal.</p>
Opportunities for Victoria Park	<p>Climbing Victoria considers this to be an excellent opportunity as there is currently no facility in Australia that is like what could be developed at the Victoria Park site.</p> <p>If an appropriate facility could be developed within Victoria Park then it would enable the venue to be included in the international rotation for hosting events providing a significant opportunity for the City of Ballarat.</p> <p>If a wall was to be built here to international standards it could attract over 2000 participants and 10,000 spectators for international competitions, and would step the whole sport up internationally. National competition attract around 600 spectators (limited by facility space).</p> <p>Currently the Grampians climbing region is regarded as the best outdoor climbing region in Victoria with a lot of visitation traffic travelling straight through Ballarat. A facility of this scale would capture significant visitor traffic.</p> <p>The club has indicated that it would be great to be able to be located near a natural rise in the land or near existing or proposed facilities for spectators (for example tiered seating) as well as change room facilities and parking.</p>

Name of Club / Organisation	St Patricks College
Facilities Used	College uses park oval #10 for after school cricket program, some school activities and the park generally for some classes

Name of Club / Organisation	St Patricks College
	<p>in science and leadership.</p> <p>Some school sports are conducted in the park including soccer and cycling.</p> <p>The whole school participates in an event called 'Edmund Rice Day', a 15km walkathon about the park and lake.</p>
Challenges / Issues	<p>Park lacks facilities and infrastructure.</p> <p>Ovals are not well maintained.</p> <p>Park is unsafe at night.</p> <p>It is difficult to contain people in the park during activities.</p> <p>The college is not sure when the park gates will be open or closed</p>
Opportunities for Victoria Park	<p>Establish 2-3 new multi-use sports ovals for shared school/community use (or upgrade existing ovals to increase multi-use options), e.g. rugby, soccer, football and cricket.</p> <p>Improve oval drainage, irrigation and general maintenance. Develop additional change rooms, toilet block and shelter facilities.</p> <p>The College is interested in an agreement with Council to maintain oval #10 for school and after school use, with the oval being available for community use at other times. It would be set up for oval and rectangular sports. The College approached Council about this in 2009-10 and is still interested.</p> <p>Victoria Park is like Fawkner Park, Central Park or an English Common.</p> <p>If facilities were higher quality with irrigated sports fields, they would be better used and tournaments and competitions could be held.</p> <p>Improve traffic management throughout the park, including reduced speeds.</p>

Name of Club / Organisation	Victoria Park Soccer Club
Membership Information	<p>Club has grown from 153 members in 2012 to 247 in 2015. Growth is being experienced across all levels, seniors, juniors and females.</p> <p>The club does not turn any potential new members away. The current rate of growth is approximately 8-10% per year.</p>
Facilities Used	<p>Shared tenancy arrangements are still applicable with an increase in the number of junior matches and temporary under 11's.</p>
Challenges / Issues	<p>Sharing with schools is still a major difficulty for the club with muddy grounds creating a constant challenge.</p> <p>Two temporary female change rooms have been created by the addition of a divider. It is considered that a minimum of four</p>

	<p>(4) (or ideally six (6)) change room facilities would be needed as part of any redevelopment.</p> <p>Lighting, adequate space and lack of shelter considerations are still relevant issues for the club.</p> <p>Additionally the club is currently losing revenue at the start of the season (March to April) due to the playing ovals not being in an adequate condition to use (due to rain). In 2014 this caused the club to be unable to play at Victoria Park until round 10 of the season, requiring them to rely on the use of other sites such as Morsehead Park and as far as Learmonth. Games have also been required to change ovals within the site to ovals which are located a significant distance from the clubroom facilities.</p>
Opportunities for Victoria Park	<p>The 2012 identified opportunities for the park are still considered to be relevant (i.e. better playing surfaces, additional grounds, lighting, pavilion/change room upgrade, storage) with increasing opportunities for public use of the site seen as an opportunity to potentially draw more users to the club. Lighting for junior and senior training is considered to be a significant issue.</p> <p>The club also suggested that a little athletics club could be accommodated on site.</p>
Name of Club / Organisation	Wendouree Archery Club
Membership Information	<p>Membership has increased from 38 in June 2012 to 63 members as at 1 May 2015, which consists of 49 seniors and 14 juniors, 47 of which are male and 16 female.</p> <p>Come'n'try days attract 30 people on average, however further growth is restricted due to current venue size. The diversity of members has also increased, with residents coming from wider within the region (e.g. Ararat); and participants from diverse backgrounds including four disabled members.</p> <p>Archery practise seven (7) days a week with beginners and clout being conducted on Saturday and Sunday mornings and the facilities available at all other times.</p> <p>Club promotes itself as a family friendly and is an accredited Good Sports club.</p>
Facilities Used	<p>Club is still located within the Prince of Wales Park with the proviso that it will remain there until a new more suitable home can be found, with the club considering Victoria Park to be the ideal location. The club has been working with Council since 2009 in regards to this relocation.</p> <p>Facilities at the current location are now very limited. The indoor shooting range location was replaced with an aquatic centre and the temporary airport location is also now no longer useable as asbestos has recently been found within the building. In addition the club is also no longer able to practise clout at Princes Park so is currently only able to operate it's outdoor target discipline at this location (field archery discipline is located elsewhere). Only five (5) targets are currently mobile and equipment is required to be stored at a members house. Baseballs entering the area occupied by archery is also a safety issue at the current facility.</p>

Challenges / Issues	<p>A facility that can accommodate both indoor and outdoor shooting facilities is still required as the requirement to move from outdoor to indoor on short notice (e.g. for inclement weather) poses several problems in regards to the clubs junior members.</p> <p>Finding a suitable location for the Club is constrained by safety issues, with the Club stating that although archery is considered to be the safe sport there are considerable locational restrictions in place.</p>
Opportunities for Victoria Park	<p>In light of the challenges, the location identified within Victoria Park in 2012 is still favoured as it is considered to be able to accommodate both indoor and outdoor shooting disciplines in one location, i.e. south west corner – Gillies and Winter Streets).</p> <p>Perimeter fencing will be required on at least two sides. Any new facility will need to have a building large enough to accommodate indoor shooting tournaments and practise, and storage of approximately 40 targets.</p> <p>There are limited country clubs that have satisfactory facilities, with the majority being located in Melbourne and in the Dandenongs region. Getting tournaments back into the country is considered a priority for the discipline with facilities located this side of the state considered to offer considerable advantages to members, with the proposal for a new facility supported by Archery Victoria.</p>